

FLORIDA DEPARTMENT OF ENVIRONMENTAL PROTECTION
CERTIFIED CORNER RECORD

DOC. # _____

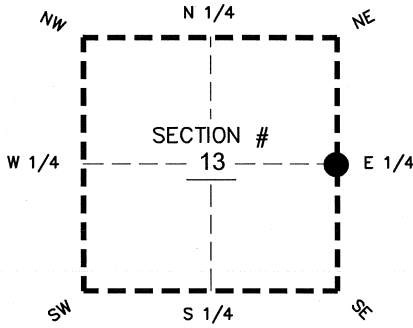
BLM. # T43SR26E700440

CORNER DESCRIPTION:

MONUMENTATION DESCRIPTION (EVIDENCE FOUND OR METHOD TO SET)

Depict corner with ●

FOUND 4" X 4" CONCRETE MONUMENT WITH DISK "STARNES & ASSOC." 1.2' S. OF FENCE CORNER, PROJECTS 1.0' ABOVE GROUND



PRIOR CCR'S:

DOC. # 0006313, 0020884, 089446

HORIZONTAL POSITION INFORMATION (if determined):

Latitude 26°43'55.6179" N Longitude 81°39'50.3200" W

Y(NORTHING-Ft.) 871940.42 X(EASTING-Ft.) 765840.54 Zone WEST

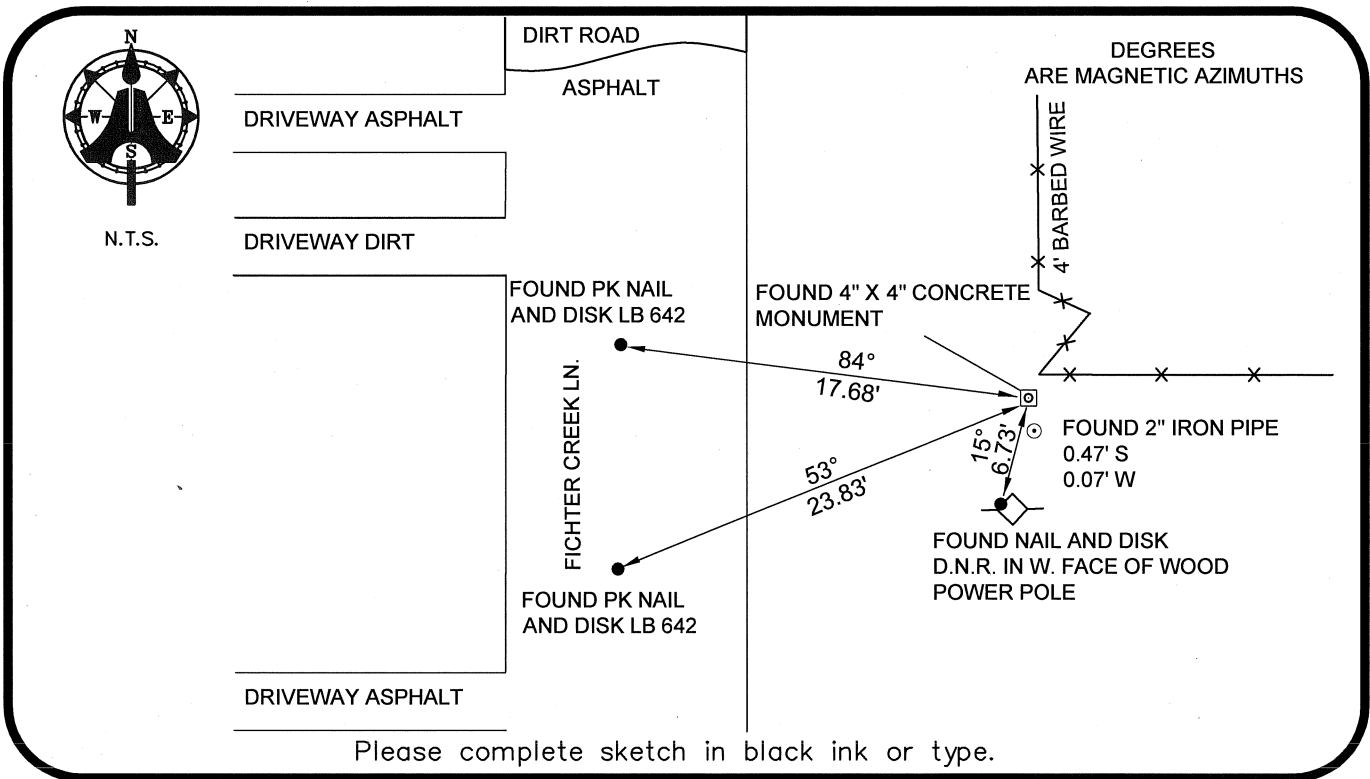
Convergence 00°09'04.1" Scale factor 0.99995497

Coordinate determination: GPS

Horizontal datum: NAD83(NSRS2007)

Accuracy (circle one): 1st 2nd 3rd other 1:35,000

E 1/4 corner of Section 13
Twp 43 S, Rge 26 E
Tallahassee Base Meridian,
LEE County(s), Florida



Please complete sketch in black ink or type.

SURVEYORS CERTIFICATE:

03-06-2008

I certify the monument and accessories indicated above were field located on _____

BEN R. HOMOLA

Ben R. Homola 3950
SIGNATURE PSM NO.

AIM ENGINEERING & SURVEYING, INC. 3114
FIRM OR AGENCY LB NO.

5300 LEE BOULEVARD
LEHIGH ACRES ADDRESS FL 33971

(239)332-4569 07/30/2008
PHONE NUMBER DATE

EMBOSSSED SEAL OVER SIGNATURE

SEND ORIGINAL TO:
Department of Environmental Protection
Bureau of Surveying and Mapping
3900 Commonwealth Boulevard
Mail Station 105
Tallahassee, Florida 32399

D.E.P. USE ONLY
Processed: _____
B.L.M. - I.D. _____
QUAD - I.D. _____