


FLORIDA DEPARTMENT OF ENVIRONMENTAL PROTECTION CERTIFIED CORNER RECORD

DOC. # _____

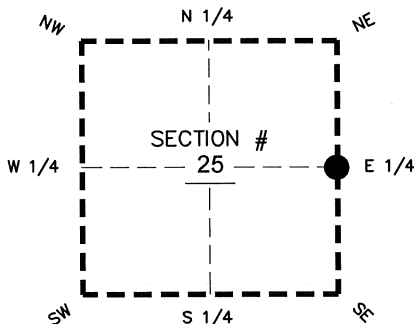
BLM. # T43SR26E700240

CORNER DESCRIPTION:

MONUMENTATION DESCRIPTION (EVIDENCE FOUND OR METHOD TO SET)

Depict corner with 

SECTION CORNER NOT SET, FALLS IN HICKEY CREEK. CALCULATED POSITION USING FOUND MONUMENTATION ALONG SECTION LINE AND WEST BOUNDARY LINE OF UNIT No. 2 PINE CREEK ACRES, AS RECORDED IN P.B.10, PG.74 OF THE PUBLIC RECORDS OF LEE COUNTY, FLORIDA



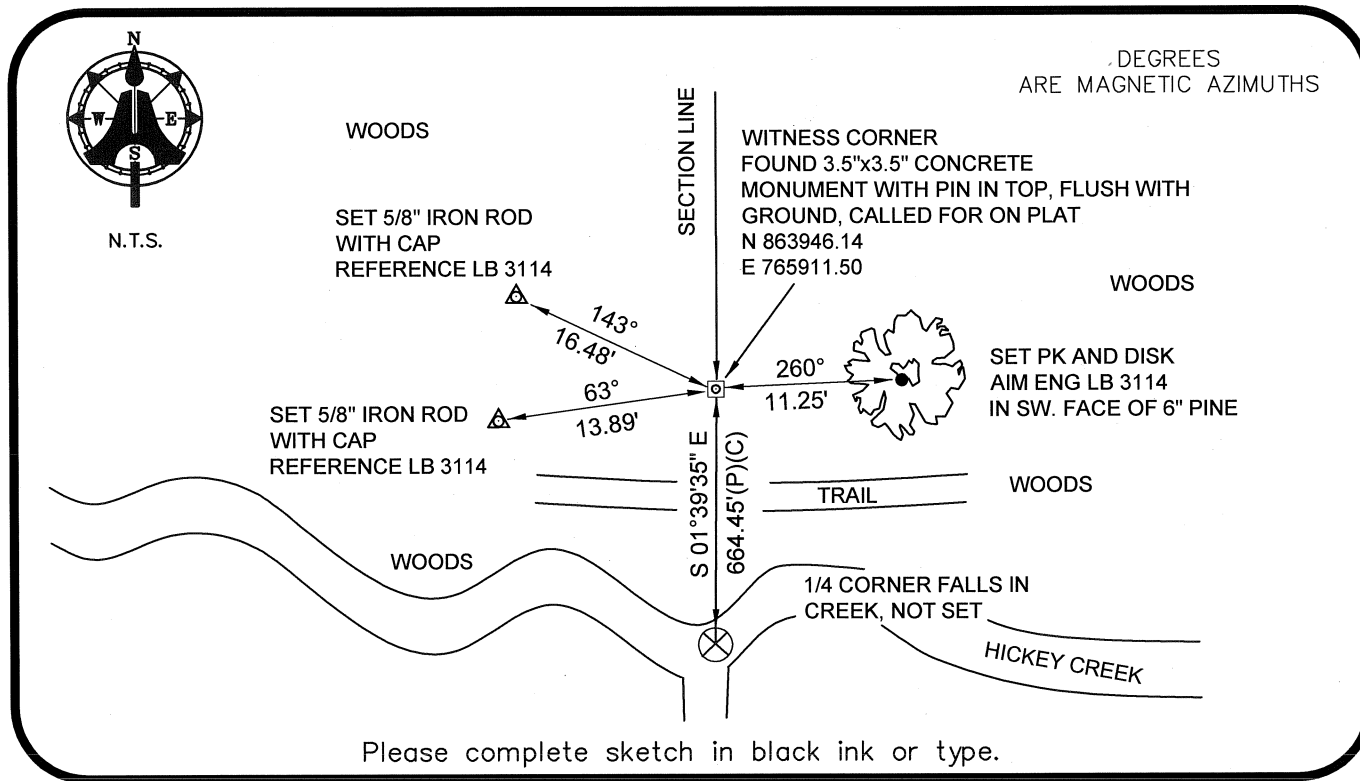
E 1/4 corner of Section 25
Twp 43 S, Rge 26 E
Tallahassee Base Meridian,
LEE County(s), Florida

PRIOR CCR'S:

DOC. # N/A

HORIZONTAL POSITION INFORMATION (if determined):

Latitude 26°42'29.8643" N Longitude 81°39'49.5770" W
 Y(NORTHING-Ft.) 863281.97 X(EASTING-Ft.) 765930.75 Zone WEST
 Convergence 00°09'04.0" Scale factor 0.99995499
 Coordinate determination: GPS
 Horizontal datum: NAD83(NSRS2007)
 Accuracy (circle one): 1st 2nd 3rd other 1:35,000



Please complete sketch in black ink or type.

SURVEYORS CERTIFICATE:

I certify the monument and accessories indicated above were field located on 08-04-2008

BEN. R. HOMOLA

Ben R. Homola 3950
 SIGNATURE PSM NO.

AIM ENGINEERING & SURVEYING, INC. 3114
 FIRM OR AGENCY LB NO.

5300 LEE BOULEVARD
 ADDRESS FL 33971

LEHIGH ACRES
 CITY STATE ZIP
 (239)332-4569 08/05/2008
 PHONE NUMBER DATE

EMBOSSSED SEAL OVER SIGNATURE

SEND ORIGINAL TO:
 Department of Environmental Protection
 Bureau of Surveying and Mapping
 3900 Commonwealth Boulevard
 Mail Station 105
 Tallahassee, Florida 32399

D.E.P. USE ONLY	
Processed:	_____
B.L.M. - I.D.	_____
QUAD - I.D.	_____