


FLORIDA DEPARTMENT OF ENVIRONMENTAL PROTECTION CERTIFIED CORNER RECORD

DOC. # _____

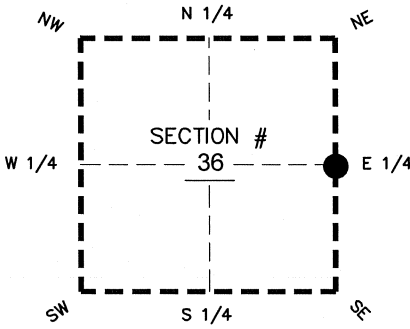
BLM. # T43SR26E700140

CORNER DESCRIPTION:

MONUMENTATION DESCRIPTION (EVIDENCE FOUND OR METHOD TO SET)

Depict corner with 

FOUND 4" X 4" CONCRETE MONUMENT (POST), PROJECTS 2.3' ABOVE GROUND



PRIOR CCR'S:

DOC. # 083365

HORIZONTAL POSITION INFORMATION (if determined):

Latitude 26°41'37.3463" N Longitude 81°39'48.7424" W

Y(NORTHING-Ft.) 857979.39 X(EASTING-Ft.) 766020.43 Zone WEST

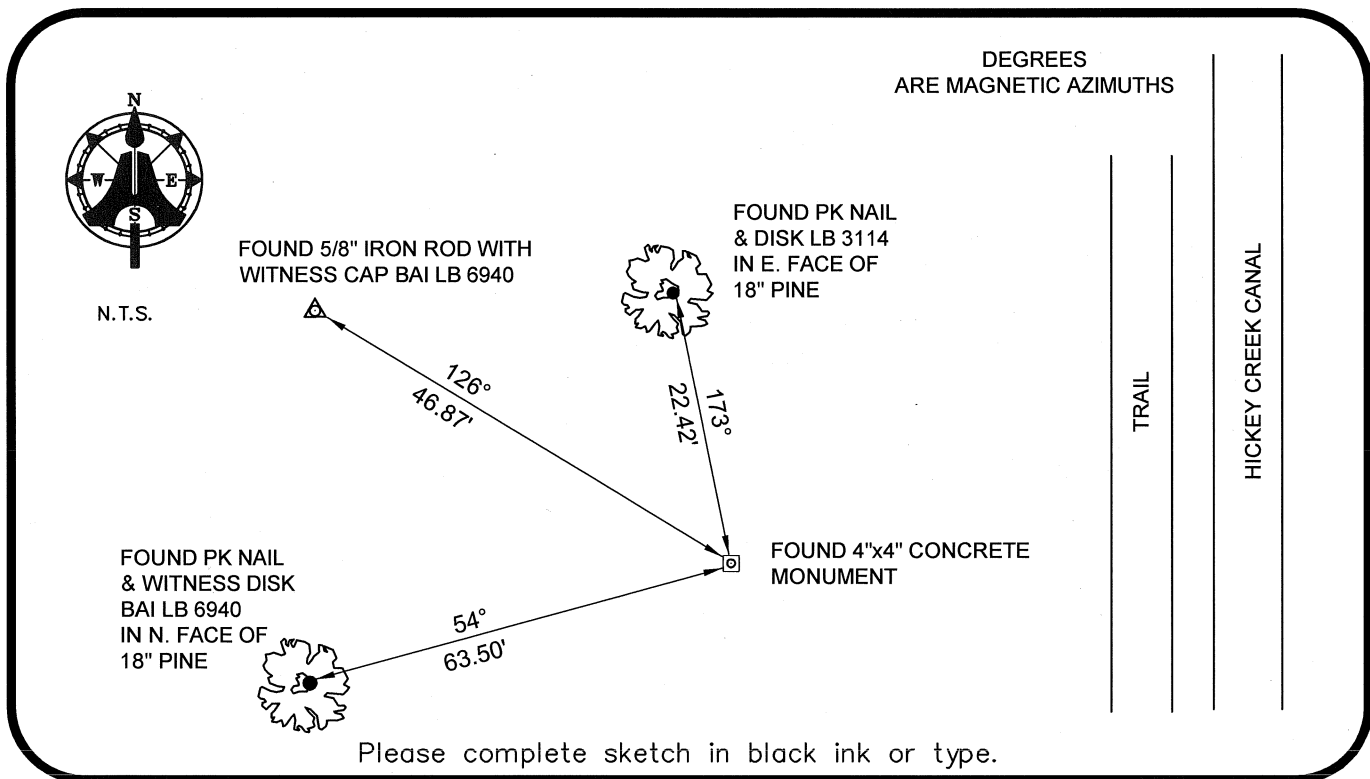
Convergence 00°09'04.1" Scale factor 0.99995501

Coordinate determination: GPS

Horizontal datum: NAD83(NSRS2007)

Accuracy (circle one): 1st 2nd 3rd other 1:35,000

E 1/4 corner of Section 36
Twp 43 S, Rge 26 E
Tallahassee Base Meridian,
LEE County(s), Florida



Please complete sketch in black ink or type.

SURVEYORS CERTIFICATE:

I certify the monument and accessories indicated above were field located on 02-19-2008

BEN R. HOMOLA


SIGNATURE

3950

AIM ENGINEERING & SURVEYING, INC. PSM NO. 3114

FIRM OR AGENCY

LB NO.

5300 LEE BOULEVARD

LEHIGH ACRES ADDRESS FL 33971

(239)332-4569 CITY STATE ZIP
07/30/2008

PHONE NUMBER

DATE

EMBOSSSED SEAL OVER SIGNATURE

SEND ORIGINAL TO:
Department of Environmental Protection
Bureau of Surveying and Mapping
3900 Commonwealth Boulevard
Mail Station 105
Tallahassee, Florida 32399

D.E.P. USE ONLY	
Processed:	_____
B.L.M. - I.D.	_____
QUAD - I.D.	_____