

FLORIDA DEPARTMENT OF ENVIRONMENTAL PROTECTION

CERTIFIED CORNER RECORD

67

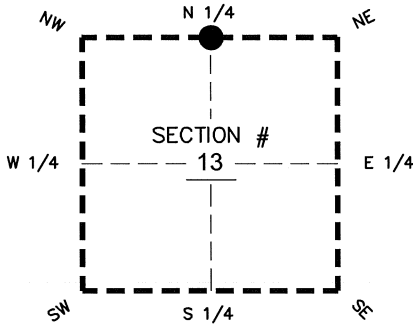
DOC. # _____

BLM. # T43SR26E640500

CORNER DESCRIPTION: **MONUMENTATION DESCRIPTION (EVIDENCE FOUND OR METHOD TO SET)**

Depict corner with

FOUND 3"x3" CONCRETE MONUMENT JOHNSON ENG LB 642
FLUSH WITH GROUND



N 1/4 corner of Section 13
Twp 43 S, Rge 26 E
Tallahassee Base Meridian,
LEE County(s), Florida

PRIOR CCR'S:

DOC. # 006309, 020881

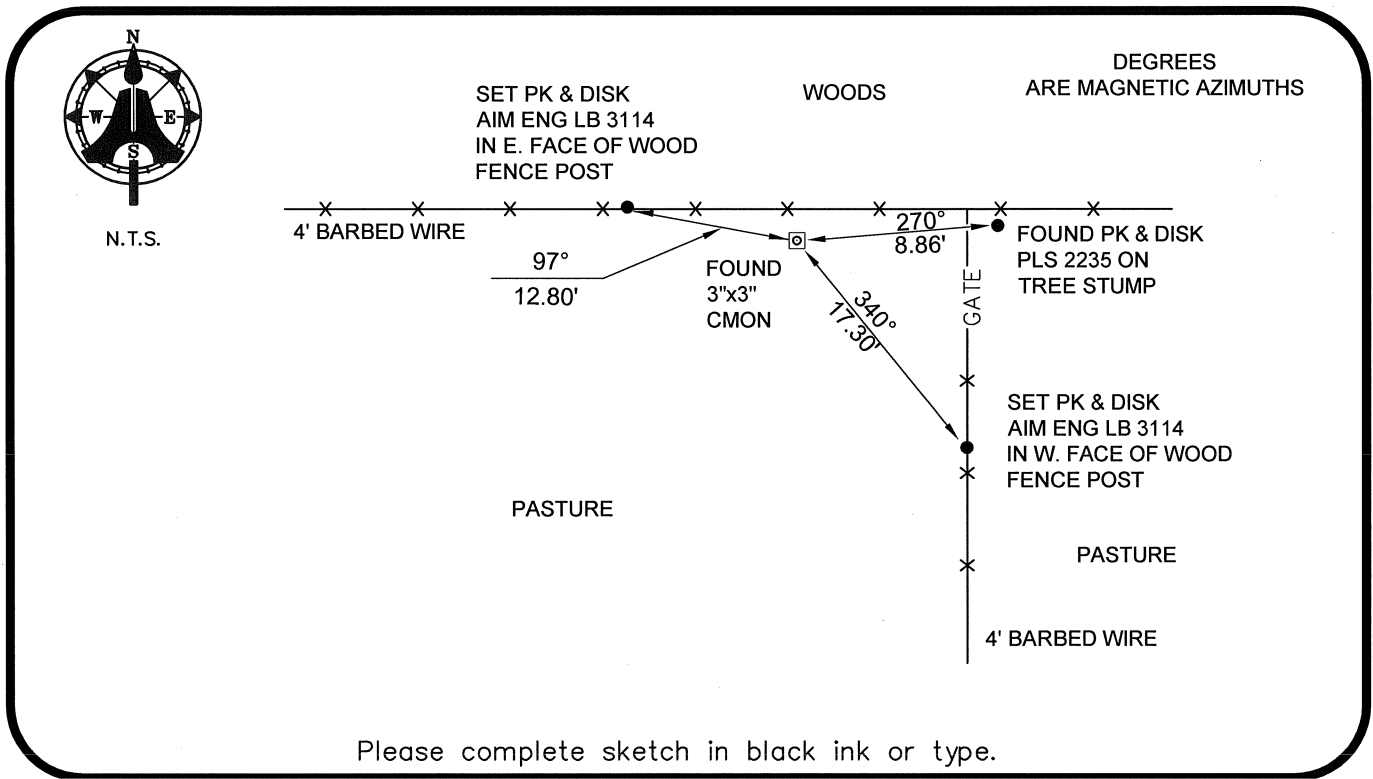
HORIZONTAL POSITION INFORMATION (if determined):

Latitude 26°44'22.1899" N Longitude 81°40'19.5284" W
Y(NORTHING-Ft.) 874616.53 X(EASTING-Ft.) 763185.48 Zone WEST
Convergence 00°08'51.1" Scale factor 0.99995431

Coordinate determination: GPS

Horizontal datum: NAD83(NSRS2007)

Accuracy (circle one): 1st 2nd 3rd other 1:35,000



Please complete sketch in black ink or type.

SURVEYORS CERTIFICATE:

I certify the monument and accessories indicated above were field located on 03-13-2008

BEN R. HOMOLA

Ben R. Homola 3950
SIGNATURE PSM NO.

AIM ENGINEERING & SURVEYING, INC. 3114
FIRM OR AGENCY LB NO.

5300 LEE BOULEVARD
LEHIGH ACRES ADDRESS FL 33971

(239)332-4569 CITY STATE ZIP
PHONE NUMBER DATE

EMBOSSSED SEAL OVER SIGNATURE

SEND ORIGINAL TO:
Department of Environmental Protection
Bureau of Surveying and Mapping
3900 Commonwealth Boulevard
Mail Station 105
Tallahassee, Florida 32399

D.E.P. USE ONLY	
Processed: _____	_____
B.L.M. - I.D. _____	_____
QUAD - I.D. _____	_____