

FLORIDA DEPARTMENT OF ENVIRONMENTAL PROTECTION CERTIFIED CORNER RECORD

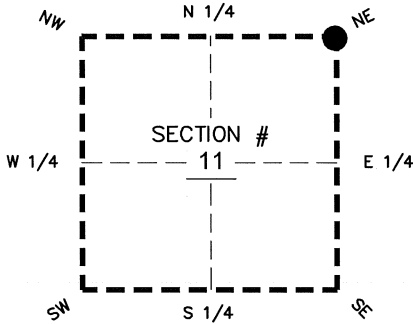
78

DOC. # _____
BLM. # T43SR26E600600

CORNER DESCRIPTION: MONUMENTATION DESCRIPTION (EVIDENCE FOUND OR METHOD TO SET)

Depict corner with

FOUND 4"x4" CONCRETE MONUMENT (TOP BROKEN)
PROJECTS 1.8' ABOVE GROUND



NE corner of Section 11
Twp 43 S, Rge 26 E
Tallahassee Base Meridian,
LEE County(s), Florida

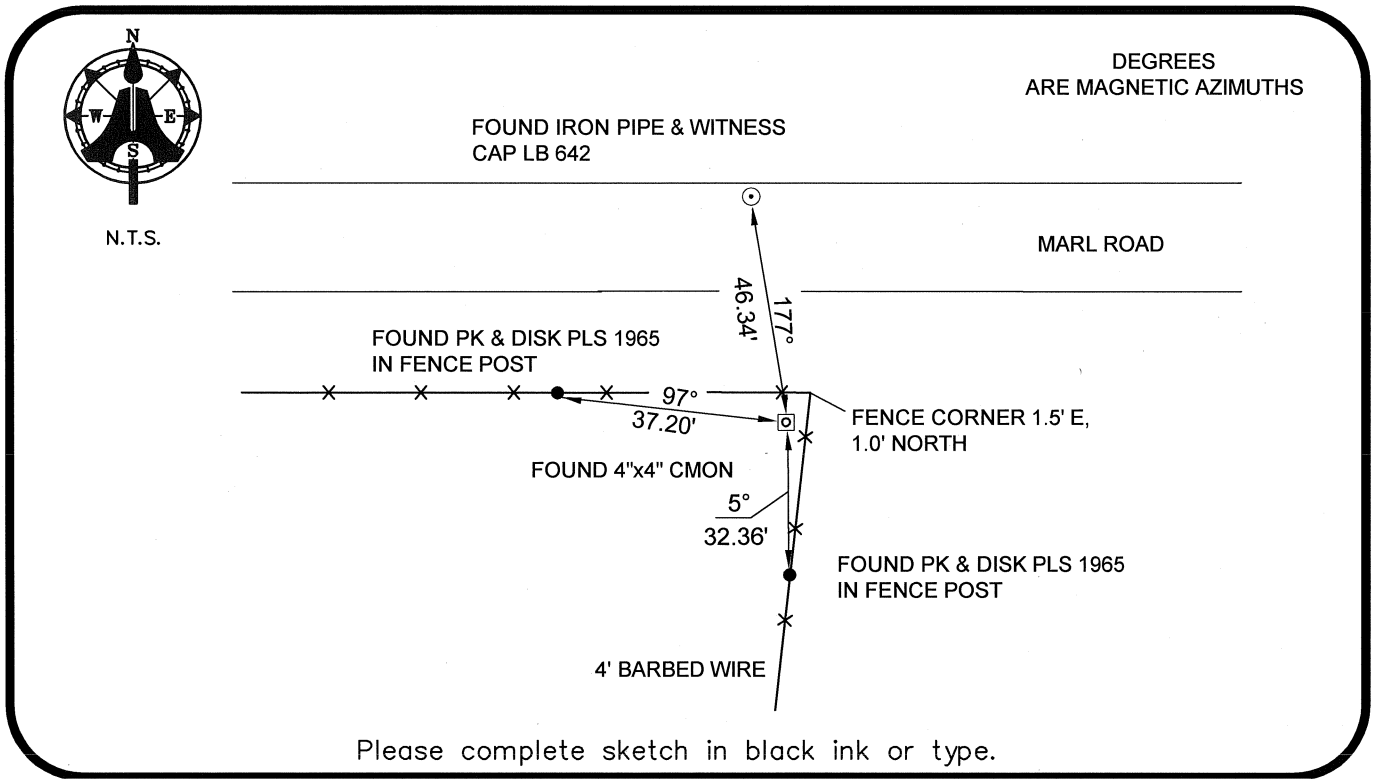
PRIOR CCR'S:

DOC. # 020879, 089398

HORIZONTAL POSITION INFORMATION (if determined):

Latitude 26°45'14.7817" N Longitude 81°40'48.2240" W
Y(NORTHING-Ft.) 879920.18 X(EASTING-Ft.) 760570.63 Zone WEST
Convergence 00°08'38.5" Scale factor 0.99995367

Coordinate determination: GPS
Horizontal datum: NAD83(NSRS2007)
Accuracy (circle one): 1st 2nd 3rd other 1:35,000



SURVEYORS CERTIFICATE:

I certify the monument and accessories indicated above were field located on 03-26-2008

BEN R. HOMOLA
Ben R. Homola 3950
SIGNATURE PSM NO.
AIM ENGINEERING & SURVEYING, INC. 3114
FIRM OR AGENCY LB NO.
5300 LEE BOULEVARD
LEHIGH ACRES ADDRESS FL 33971
CITY STATE ZIP
(239)332-4569 07/30/2008 DATE
PHONE NUMBER DATE

SEND ORIGINAL TO:
Department of Environmental Protection
Bureau of Surveying and Mapping
3900 Commonwealth Boulevard
Mail Station 105
Tallahassee, Florida 32399

D.E.P. USE ONLY	
Processed:	_____
B.L.M. - I.D.	_____
QUAD - I.D.	_____

EMBOSSSED SEAL OVER SIGNATURE