

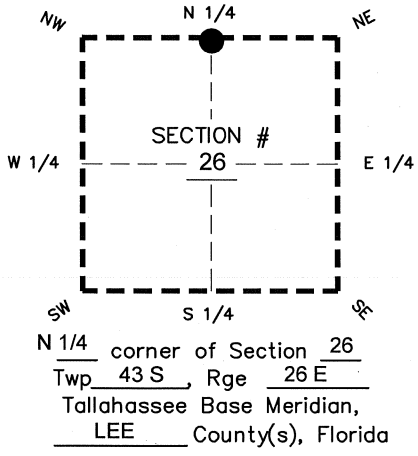
FLORIDA DEPARTMENT OF ENVIRONMENTAL PROTECTION  
CERTIFIED CORNER RECORD

DOC. # \_\_\_\_\_  
BLM. # T43SR26E540300

CORNER DESCRIPTION: MONUMENTATION DESCRIPTION (EVIDENCE FOUND OR METHOD TO SET)

Depict corner with ●

SET PK & DISK AIM ENG LB 3114, CORNER ESTABLISHED USING  
REFERENCE TIES ALONG WERNER ROAD PER CCR DOC# 028764

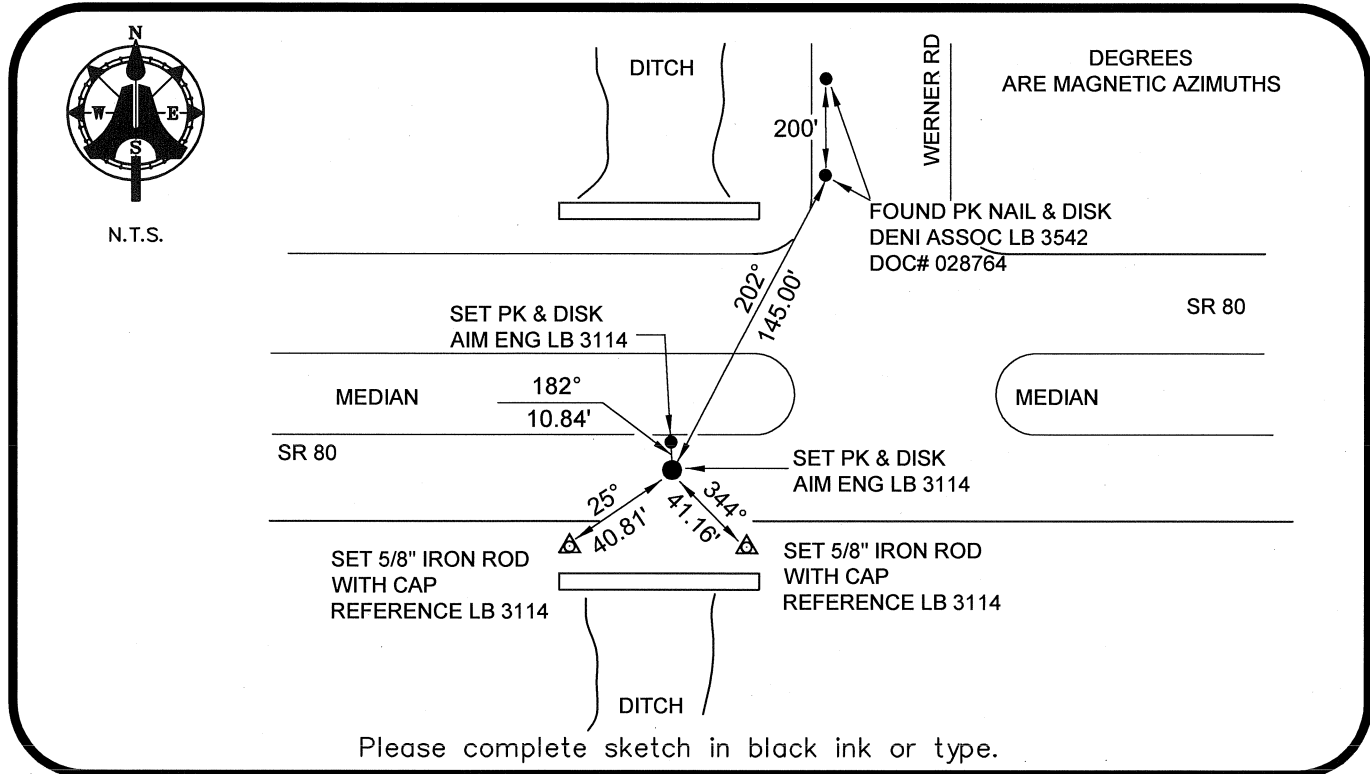


PRIOR CCR'S:

DOC. # 028764, 064470

HORIZONTAL POSITION INFORMATION ( if determined ):

Latitude 26°42'54.8377" N Longitude 81°41'17.3294" W  
Y(NORTHING-Ft.) 865783.33 X(EASTING-Ft.) 757966.93 Zone WEST  
Convergence 00°08'24.7" Scale factor 0.99995306  
Coordinate determination: GPS  
Horizontal datum: NAD83(NSRS2007)  
Accuracy (circle one): 1st 2nd 3rd other 1:35,000



SURVEYORS CERTIFICATE:

I certify the monument and accessories indicated above were field located on 07-30-2008

BEN R. HOMOLA

*Ben R. Homola* 3950  
SIGNATURE PSM NO.

AIM ENGINEERING & SURVEYING, INC. 3114  
FIRM OR AGENCY LB NO.

5300 LEE BOULEVARD  
LEHIGH ACRES ADDRESS FL 33971

(239)332-4569 CITY STATE ZIP  
PHONE NUMBER DATE

EMBOSSSED SEAL OVER SIGNATURE

SEND ORIGINAL TO:  
Department of Environmental Protection  
Bureau of Surveying and Mapping  
3900 Commonwealth Boulevard  
Mail Station 105  
Tallahassee, Florida 32399

D.E.P. USE ONLY  
Processed: \_\_\_\_\_  
B.L.M. - I.D. \_\_\_\_\_  
QUAD - I.D. \_\_\_\_\_