


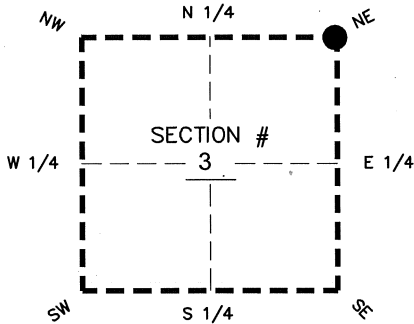
FLORIDA DEPARTMENT OF ENVIRONMENTAL PROTECTION
CERTIFIED CORNER RECORD

DOC. # _____
BLM. # T43SR26E500700

CORNER DESCRIPTION: MONUMENTATION DESCRIPTION (EVIDENCE FOUND OR METHOD TO SET)

Depict corner with 

FOUND 3/4" IRON PIPE WITH CAP LB 642



NE corner of Section 3
Twp 43 S, Rge 26 E
Tallahassee Base Meridian,
LEE County(s), Florida

PRIOR CCR'S:

DOC. # 089968

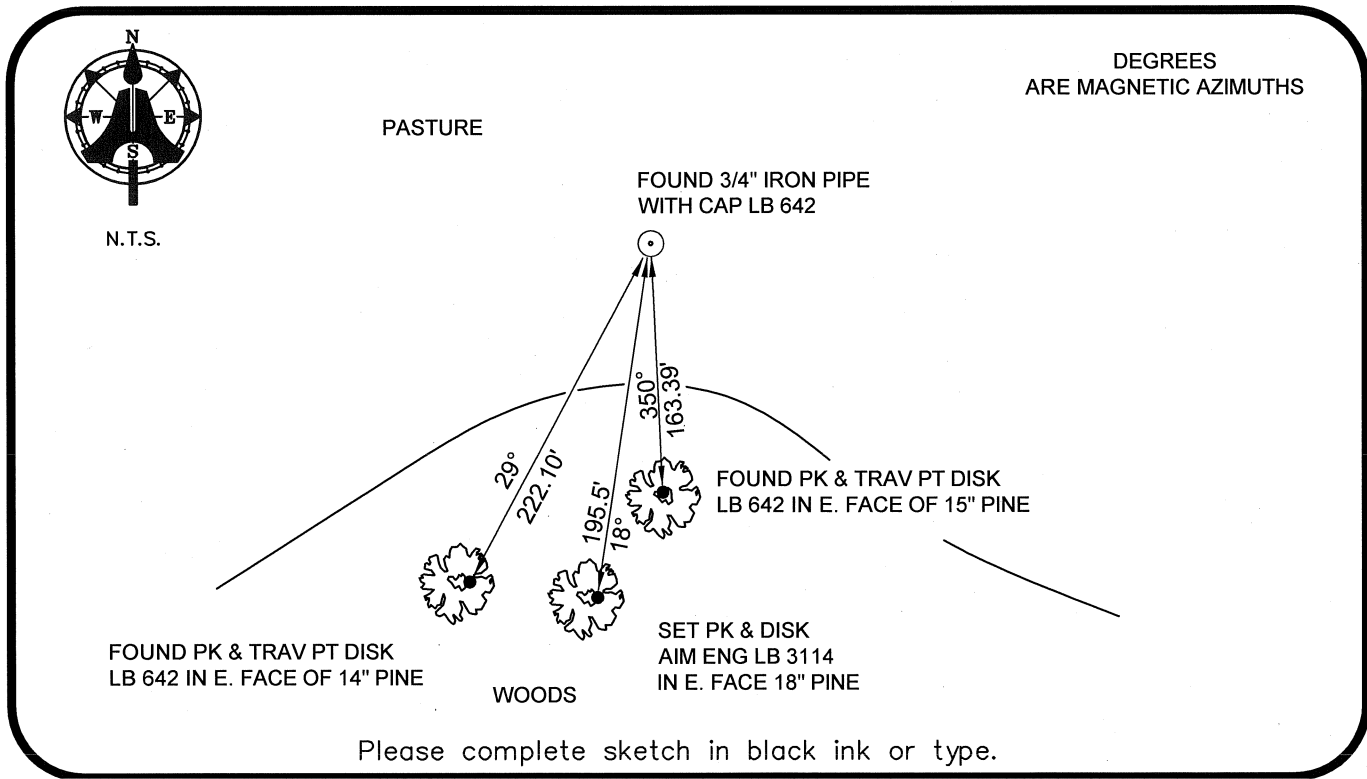
HORIZONTAL POSITION INFORMATION (if determined):

Latitude 26°46'08.8439" N Longitude 81°41'45.5984" W
Y(NORTHING-Ft.) 885366.17 X(EASTING-Ft.) 755356.80 Zone WEST
Convergence 00°08'12.9" Scale factor 0.99995246

Coordinate determination: GPS

Horizontal datum: NAD83(NSRS2007)

Accuracy (circle one): 1st 2nd 3rd other 1:35,000



DEGREES
ARE MAGNETIC AZIMUTHS

N.T.S.

PASTURE

FOUND 3/4" IRON PIPE
WITH CAP LB 642

FOUND PK & TRAV PT DISK
LB 642 IN E. FACE OF 15" PINE

FOUND PK & TRAV PT DISK
LB 642 IN E. FACE OF 14" PINE

SET PK & DISK
AIM ENG LB 3114
IN E. FACE 18" PINE

WOODS

Please complete sketch in black ink or type.

SURVEYORS CERTIFICATE:

I certify the monument and accessories indicated above were field located on 04-21-2008

BEN R. HOMOLA

Ben R. Homola

3950

SIGNATURE

PSM NO.
3114

AIM ENGINEERING & SURVEYING, INC.

LB NO.

FIRM OR AGENCY

5300 LEE BOULEVARD

LEHIGH ACRES

ADDRESS

FL

33971

CITY

(239)332-4569

PHONE NUMBER

STATE

07/30/2008

DATE

SEND ORIGINAL TO:

Department of Environmental Protection
Bureau of Surveying and Mapping
3900 Commonwealth Boulevard
Mail Station 105
Tallahassee, Florida 32399

D.E.P. USE ONLY

Processed: _____

B.L.M. - I.D. _____

QUAD - I.D. _____

EMBOSSSED SEAL OVER SIGNATURE