

FLORIDA DEPARTMENT OF ENVIRONMENTAL PROTECTION

CERTIFIED CORNER RECORD

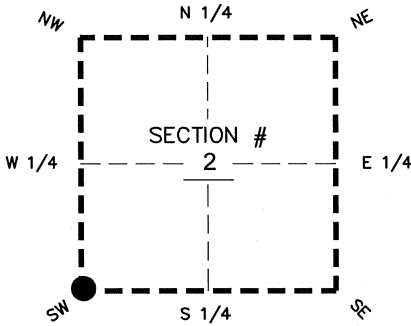
76

DOC. # _____
 BLM. # T43SR26E500600

CORNER DESCRIPTION: **MONUMENTATION DESCRIPTION (EVIDENCE FOUND OR METHOD TO SET)**

Depict corner with

FOUND 3.5"x3.5" CONCRETE MONUMENT, NO ID
 PROJECTS 1.8' ABOVE GROUND



SW corner of Section 2
 Twp 43 S, Rge 26 E
 Tallahassee Base Meridian,
LEE County(s), Florida

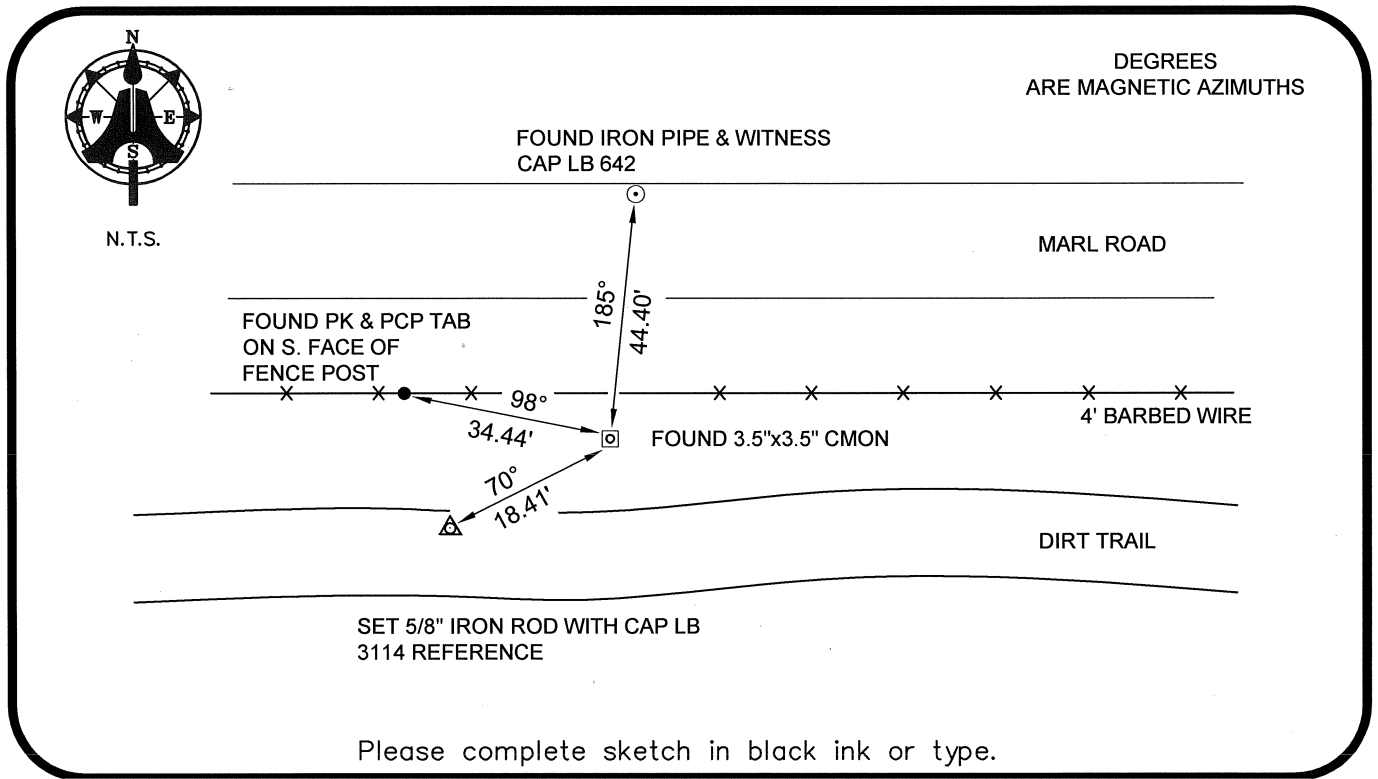
PRIOR CCR'S:

DOC. # 020877, 089967

HORIZONTAL POSITION INFORMATION (if determined):

Latitude 26°45'16.1502" N Longitude 81°41'46.5040" W
 Y(NORTHING-Ft.) 880045.42 X(EASTING-Ft.) 755287.42 Zone WEST
 Convergence 00°08'12.3" Scale factor 0.99995244

Coordinate determination: GPS
 Horizontal datum: NAD83(NSRS2007)
 Accuracy (circle one): 1st 2nd 3rd other 1:35,000



Please complete sketch in black ink or type.

SURVEYORS CERTIFICATE:

I certify the monument and accessories indicated above were field located on 03-26-2008

BEN R. HOMOLA

Ben R. Homola 3950
 SIGNATURE PSM NO.

AIM ENGINEERING & SURVEYING, INC. 3114
 FIRM OR AGENCY LB NO.

5300 LEE BOULEVARD
 LEHIGH ACRES ADDRESS FL 33971

(239)332-4569 CITY STATE ZIP
 PHONE NUMBER DATE

EMBOSSSED SEAL OVER SIGNATURE

SEND ORIGINAL TO:
 Department of Environmental Protection
 Bureau of Surveying and Mapping
 3900 Commonwealth Boulevard
 Mail Station 105
 Tallahassee, Florida 32399

D.E.P. USE ONLY	
Processed:	_____
B.L.M. - I.D.	_____
QUAD - I.D.	_____