


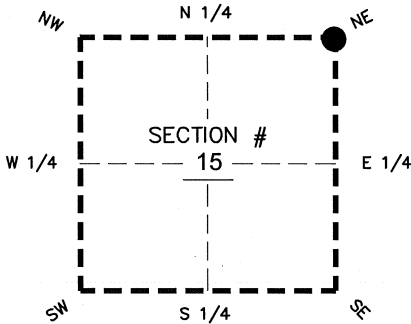
FLORIDA DEPARTMENT OF ENVIRONMENTAL PROTECTION
CERTIFIED CORNER RECORD

DOC. # _____
BLM. # T43SR26E500500

CORNER DESCRIPTION: MONUMENTATION DESCRIPTION (EVIDENCE FOUND OR METHOD TO SET)

Depict corner with 

FOUND 4"x4" CONCRETE MONUMENT, NO ID
PROJECTS 2' ABOVE GROUND



NE corner of Section 15
Twp 43 S, Rge 26 E
Tallahassee Base Meridian,
LEE County(s), Florida

PRIOR CCR'S:

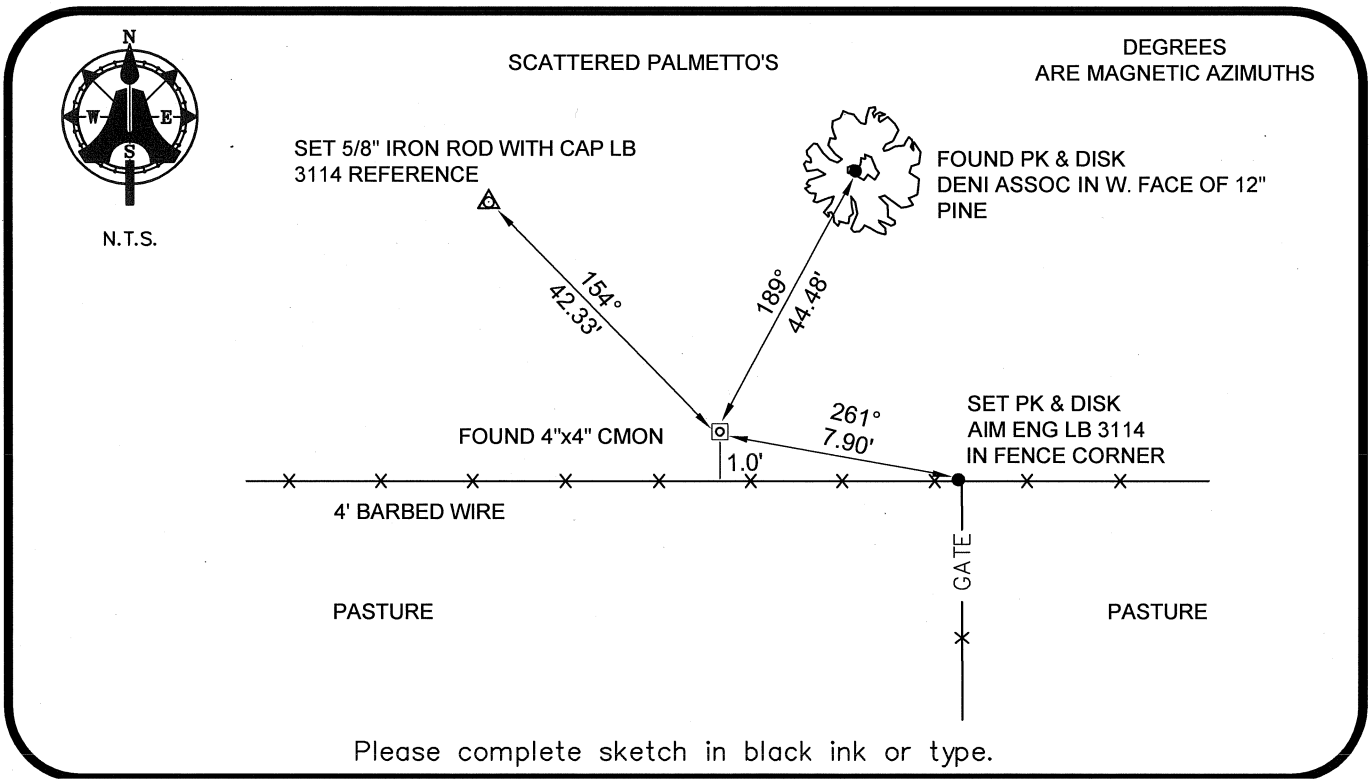
DOC. # 0035212, 0036587

HORIZONTAL POSITION INFORMATION (if determined):

Latitude 26°44'23.1324" N Longitude 81°41'47.1387" W
Y(NORTHING-Ft.) 874692.01 X(EASTING-Ft.) 755242.65 Zone WEST
Convergence 00°08'11.7" Scale factor 0.99995243

Coordinate determination: GPS
Horizontal datum: NAD83(NSRS2007)

Accuracy (circle one): 1st 2nd 3rd other 1:35,000



SURVEYORS CERTIFICATE:

I certify the monument and accessories indicated above were field located on 03-14-2008

BEN R. HOMOLA

 3950

SIGNATURE

PSM NO.

AIM ENGINEERING & SURVEYING, INC. 3114

FIRM OR AGENCY

LB NO.

5300 LEE BOULEVARD

LEHIGH ACRES ADDRESS FL 33971

(239)332-4569 CITY STATE ZIP
07/30/2008 DATE

PHONE NUMBER

DATE

EMBOSSSED SEAL OVER SIGNATURE

SEND ORIGINAL TO:
Department of Environmental Protection
Bureau of Surveying and Mapping
3900 Commonwealth Boulevard
Mail Station 105
Tallahassee, Florida 32399

D.E.P. USE ONLY
Processed: _____
B.L.M. - I.D. _____
QUAD - I.D. _____