


FLORIDA DEPARTMENT OF ENVIRONMENTAL PROTECTION
CERTIFIED CORNER RECORD

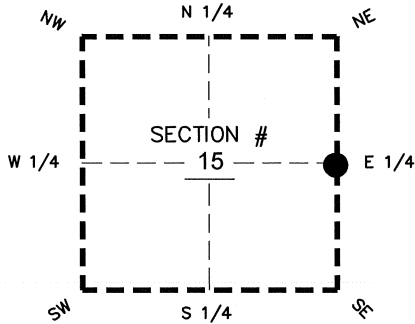
54

DOC. # _____
 BLM. # T43SR26E500440

CORNER DESCRIPTION: MONUMENTATION DESCRIPTION (EVIDENCE FOUND OR METHOD TO SET)

Depict corner with 

FOUND 3.5"x3.5" CONCRETE MONUMENT, NO ID
 PROJECTS 0.5' ABOVE GROUND



E 1/4 corner of Section 15
 Twp 43 S, Rge 26 E
 Tallahassee Base Meridian,
LEE County(s), Florida

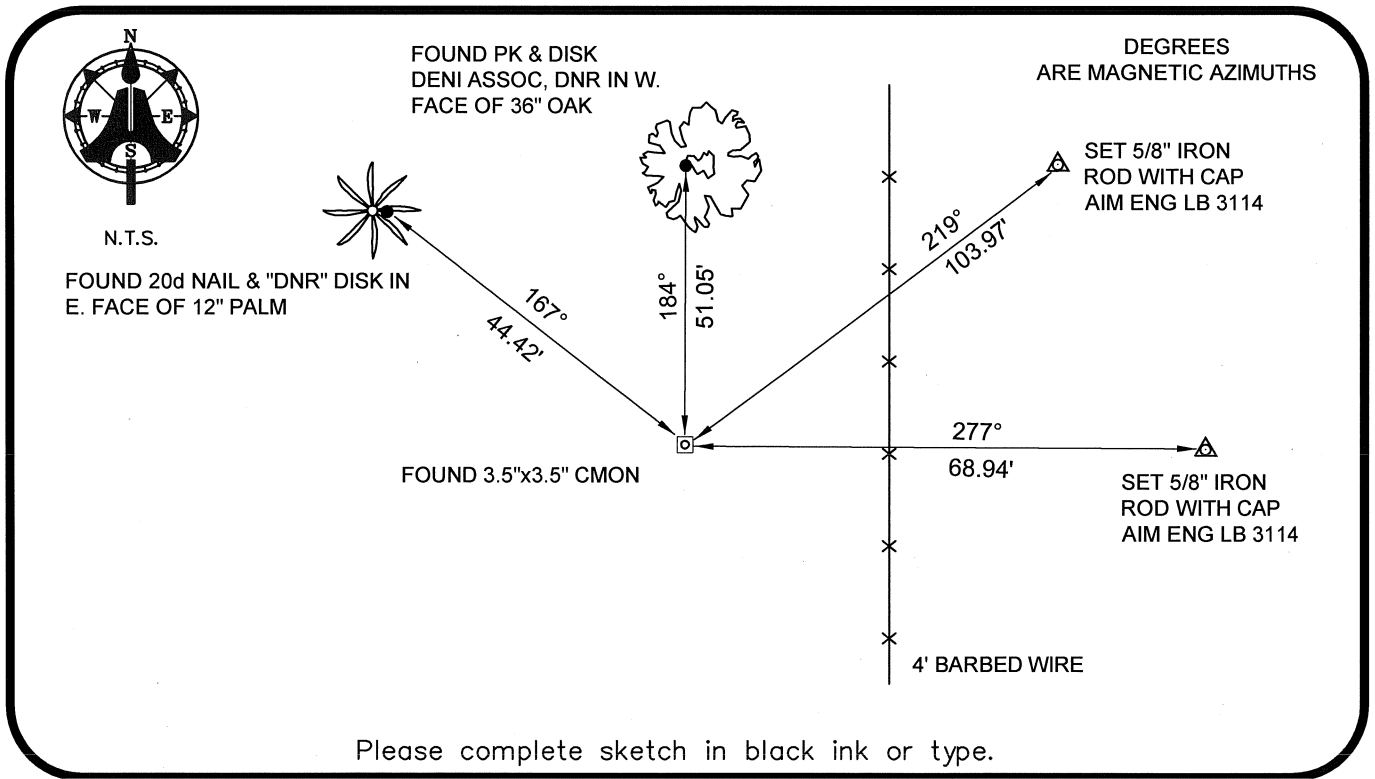
PRIOR CCR'S:

DOC. # 0035185, 0036597

HORIZONTAL POSITION INFORMATION (if determined):

Latitude 26°43'56.8119" N Longitude 81°41'47.6797" W
 Y(NORTHING-Ft.) 872034.28 X(EASTING-Ft.) 755199.94 Zone WEST
 Convergence 00°08'11.4" Scale factor 0.99995242

Coordinate determination: GPS
 Horizontal datum: NAD83(NSRS2007)
 Accuracy (circle one): 1st 2nd 3rd other 1:35,000



Please complete sketch in black ink or type.

SURVEYORS CERTIFICATE:

I certify the monument and accessories indicated above were field located on 03-14-2008

BEN R. HOMOLA

Ben R. Homola

3950

SIGNATURE

PSM NO.

AIM ENGINEERING & SURVEYING, INC.

3114

FIRM OR AGENCY

LB NO.

5300 LEE BOULEVARD

LEHIGH ACRES

ADDRESS

FL

33971

CITY

(239)332-4569

STATE

07/30/2008

ZIP

PHONE NUMBER

DATE

EMBOSSSED SEAL OVER SIGNATURE

SEND ORIGINAL TO:
 Department of Environmental Protection
 Bureau of Surveying and Mapping
 3900 Commonwealth Boulevard
 Mail Station 105
 Tallahassee, Florida 32399

D.E.P. USE ONLY	
Processed:	_____
B.L.M. - I.D.	_____
QUAD - I.D.	_____