


FLORIDA DEPARTMENT OF ENVIRONMENTAL PROTECTION
CERTIFIED CORNER RECORD

25

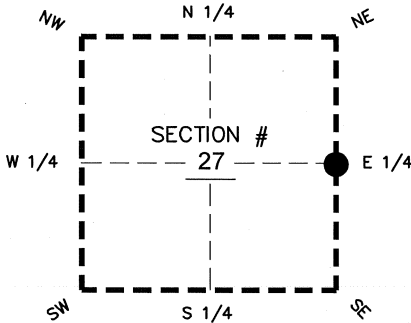
DOC. # _____
 BLM. # T43SR26E500240

CORNER DESCRIPTION:

MONUMENTATION DESCRIPTION (EVIDENCE FOUND OR METHOD TO SET)

Depict corner with 

FOUND 3.5"x3.5" CONCRETE MONUMENT WITH 2" ALUMINUM DISK STAMPED STARNES & ASSOC. PLS 2465, PROJECTS 1.9' ABOVE GROUND



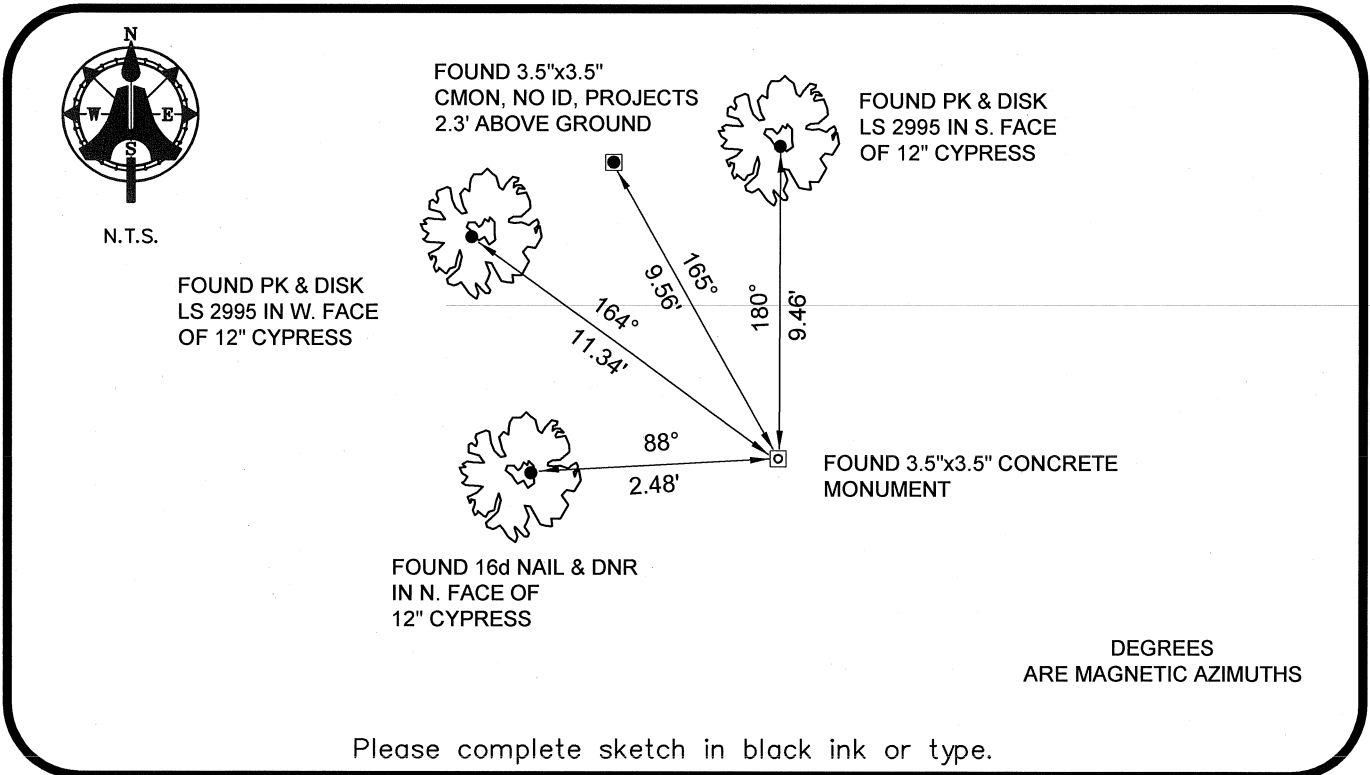
E 1/4 corner of Section 27
 Twp 43 S, Rge 26 E
 Tallahassee Base Meridian,
LEE County(s), Florida

PRIOR CCR'S:

DOC. # 036601, 064471

HORIZONTAL POSITION INFORMATION (if determined):

Latitude 26°42'28.5073" N Longitude 81°41'46.2248" W
 Y(NORTHING-Ft.) 863118.40 X(EASTING-Ft.) 755353.11 Zone WEST
 Convergence 00°08'11.6" Scale factor 0.99995246
 Coordinate determination: GPS
 Horizontal datum: NAD83(NSRS2007)
 Accuracy (circle one): 1st 2nd 3rd other 1:35,000



SURVEYORS CERTIFICATE:

I certify the monument and accessories indicated above were field located on 07-23-2008

BEN R. HOMOLA

 3950

AIM ENGINEERING & SURVEYING, INC. 3114

5300 LEE BOULEVARD
 LEHIGH ACRES ADDRESS FL 33971

(239)332-4569 07/30/2008

EMBOSSSED SEAL OVER SIGNATURE

SEND ORIGINAL TO:
 Department of Environmental Protection
 Bureau of Surveying and Mapping
 3900 Commonwealth Boulevard
 Mail Station 105
 Tallahassee, Florida 32399

| | |
|-----------------|-------|
| D.E.P. USE ONLY | |
| Processed: | _____ |
| B.L.M. - I.D. | _____ |
| QUAD - I.D. | _____ |