


# FLORIDA DEPARTMENT OF ENVIRONMENTAL PROTECTION CERTIFIED CORNER RECORD

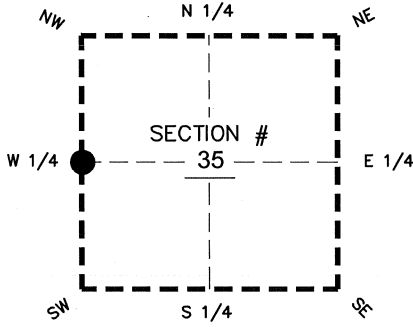
DOC. # \_\_\_\_\_

BLM. # T43SR26E500140

CORNER DESCRIPTION: MONUMENTATION DESCRIPTION (EVIDENCE FOUND OR METHOD TO SET)

Depict corner with 

FOUND 3.5" X 3.5" CONCRETE MONUMENT, NO ID  
PROJECTS 0.7' ABOVE GROUND



W 1/4 corner of Section 35  
 Twp 43 S, Rge 26 E  
 Tallahassee Base Meridian,  
LEE County(s), Florida

PRIOR CCR'S:

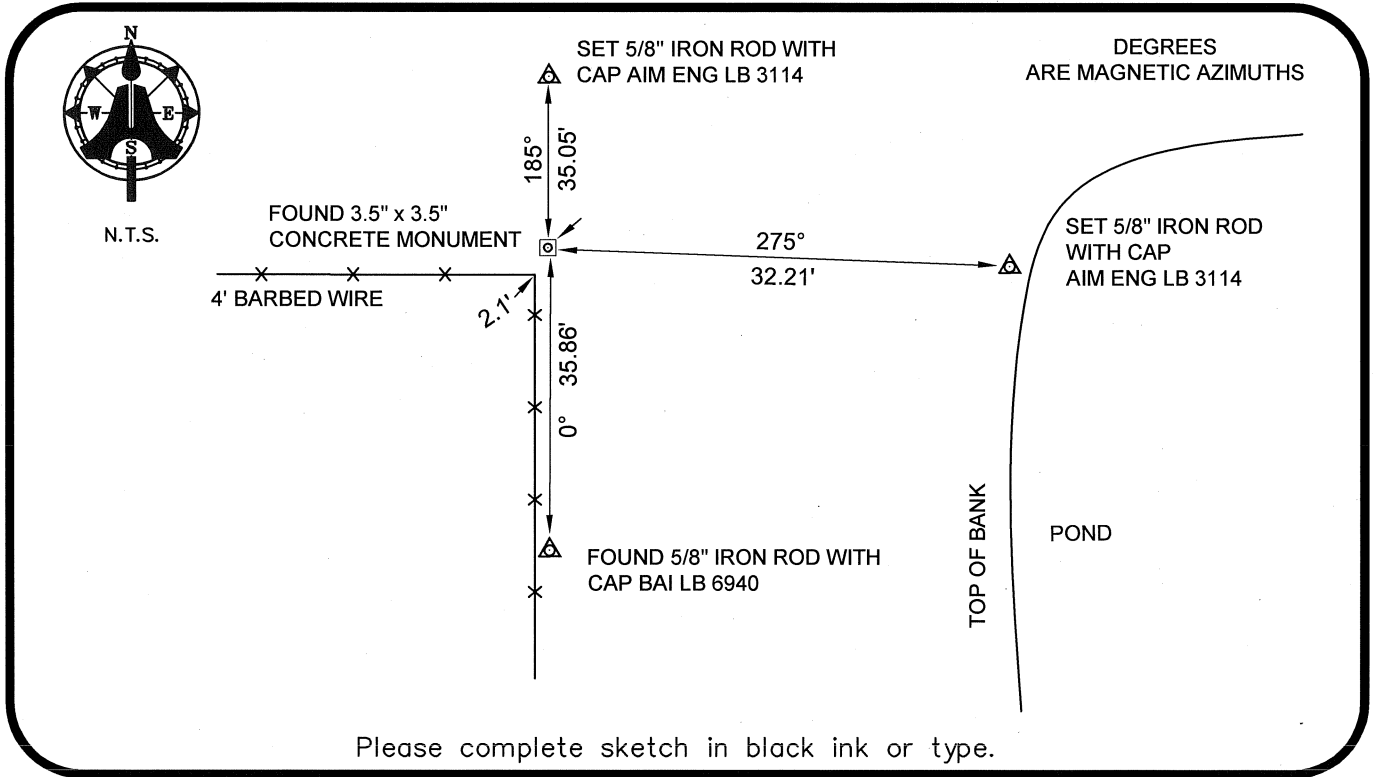
DOC. # 083353

HORIZONTAL POSITION INFORMATION ( if determined ):

Latitude 26°41'35.9687" N Longitude 81°41'45.4427" W  
 Y(NORTHING-Ft.) 857813.72 X(EASTING-Ft.) 755436.68 Zone WEST  
 Convergence 00°08'11.7" Scale factor 0.99995247

Coordinate determination: GPS  
 Horizontal datum: NAD83(NSRS2007)

Accuracy (circle one): 1st 2nd 3rd other 1:35,000



Please complete sketch in black ink or type.

SURVEYORS CERTIFICATE:

I certify the monument and accessories indicated above were field located on 02-21-2008

BEN R. HOMOLA

*Ben R. Homola*

3950

SIGNATURE

PSM NO.

AIM ENGINEERING & SURVEYING, INC.

3114

FIRM OR AGENCY

LB NO.

5300 LEE BOULEVARD

LEHIGH ACRES ADDRESS FL 33971

(239)332-4569 CITY STATE ZIP  
07/30/2008 DATE

PHONE NUMBER

DATE

EMBOSSSED SEAL OVER SIGNATURE

SEND ORIGINAL TO:  
 Department of Environmental Protection  
 Bureau of Surveying and Mapping  
 3900 Commonwealth Boulevard  
 Mail Station 105  
 Tallahassee, Florida 32399

D.E.P. USE ONLY	
Processed:	_____
B.L.M. - I.D.	_____
QUAD - I.D.	_____