

75

FLORIDA DEPARTMENT OF ENVIRONMENTAL PROTECTION CERTIFIED CORNER RECORD

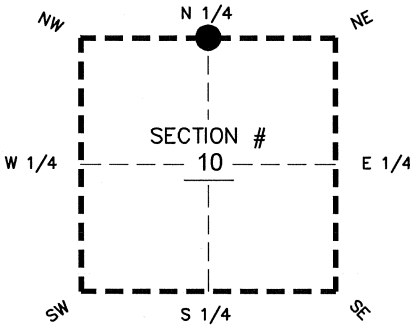
DOC. # _____

BLM. # T43SR26E440600

CORNER DESCRIPTION: _____ MONUMENTATION DESCRIPTION (EVIDENCE FOUND OR METHOD TO SET) _____

Depict corner with ●

FOUND 3.5"x3.5" CONCRETE MONUMENT, NO ID, PROJECTS 2.6' ABOVE GROUND



PRIOR CCR'S:

DOC. # 0020876

HORIZONTAL POSITION INFORMATION (if determined):

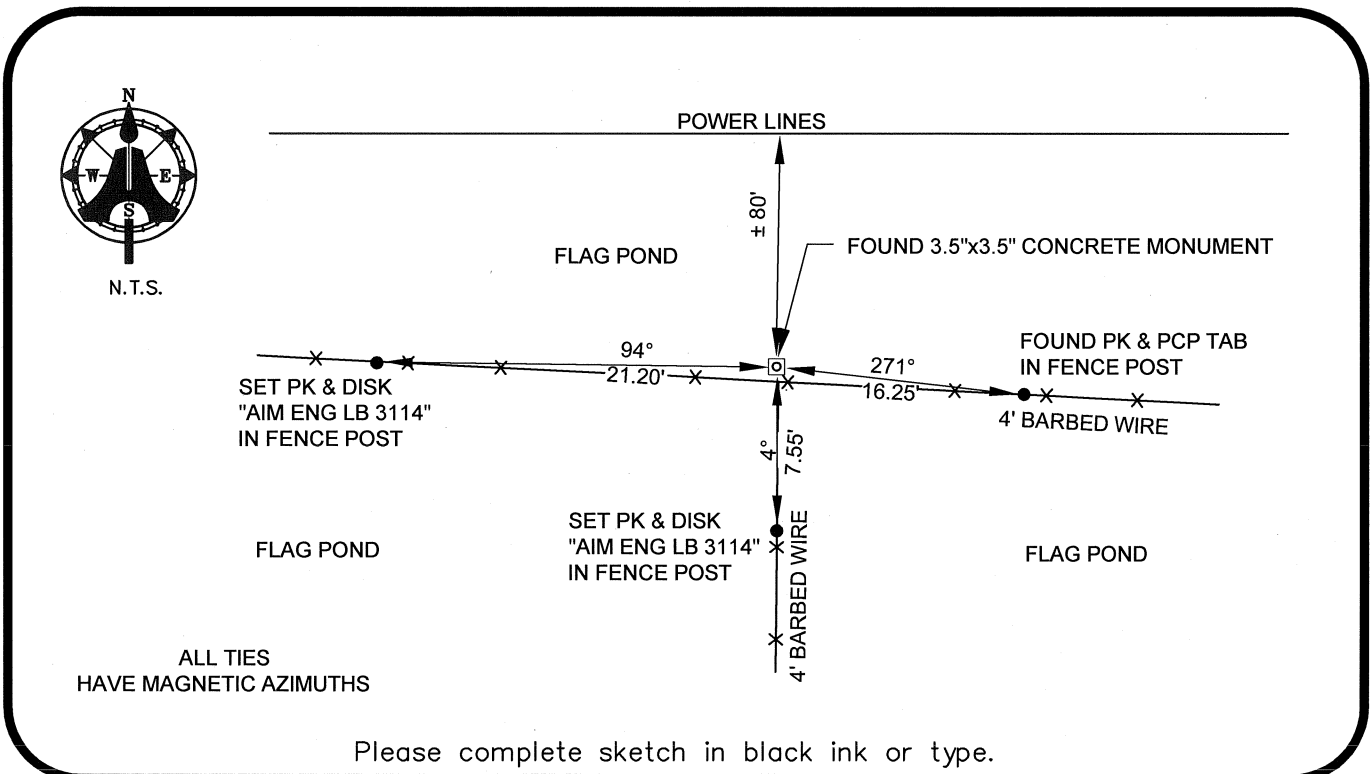
Latitude 26°45'16.2724" N Longitude 81°42'15.0813" W
 Y(NORTHING-Ft.) 880051.65 X(EASTING-Ft.) 752696.97 Zone WEST
 Convergence 00°07'59.4" Scale factor 0.99995186

Coordinate determination: GPS

Horizontal datum: NAD83(NSRS2007)

Accuracy (circle one): 1st 2nd 3rd other 1:35,000

N1/4 corner of Section 10
 Twp 43 S, Rge 26 E
 Tallahassee Base Meridian,
LEE County(s), Florida



ALL TIES
HAVE MAGNETIC AZIMUTHS

Please complete sketch in black ink or type.

SURVEYORS CERTIFICATE:

I certify the monument and accessories indicated above were field located on 03/26/08

BEN R. HOMOLA

Ben R. Homola 3950
 SIGNATURE PSM NO.
 AIM ENGINEERING & SURVEYING, INC. 3114
 FIRM OR AGENCY LB NO.

SEND ORIGINAL TO:
 Department of Environmental Protection
 Bureau of Surveying and Mapping
 3900 Commonwealth Boulevard
 Mail Station 105
 Tallahassee, Florida 32399

5300 LEE BOULEVARD
 LEHIGH ACRES ADDRESS FL 33970
 CITY STATE ZIP
 (239)332-4569 07/30/2008
 PHONE NUMBER DATE

D.E.P. USE ONLY

Processed: _____

B.L.M. - I.D. _____

QUAD - I.D. _____

EMBOSSSED SEAL OVER SIGNATURE