

# FLORIDA DEPARTMENT OF ENVIRONMENTAL PROTECTION CERTIFIED CORNER RECORD

DOC. # \_\_\_\_\_

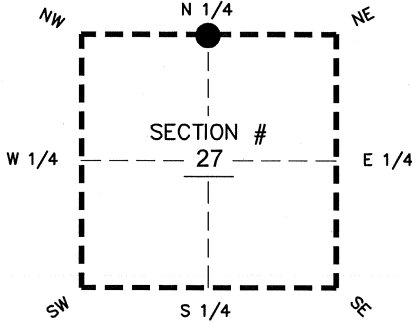
BLM. # T43SR26E440300

### CORNER DESCRIPTION:

### MONUMENTATION DESCRIPTION (EVIDENCE FOUND OR METHOD TO SET)

Depict corner with ●

FOUND 3" X 3" CONCRETE MONUMENT, NO ID, PROJECTS 0.8' BELOW GROUND



N 1/4 corner of Section 27  
 Twp 43 S, Rge 26 E  
 Tallahassee Base Meridian,  
LEE County(s), Florida

### PRIOR CCR'S:

DOC. # 0035189

### HORIZONTAL POSITION INFORMATION ( if determined ):

Latitude 26°42'54.3098" N Longitude 81°42'15.6768" W

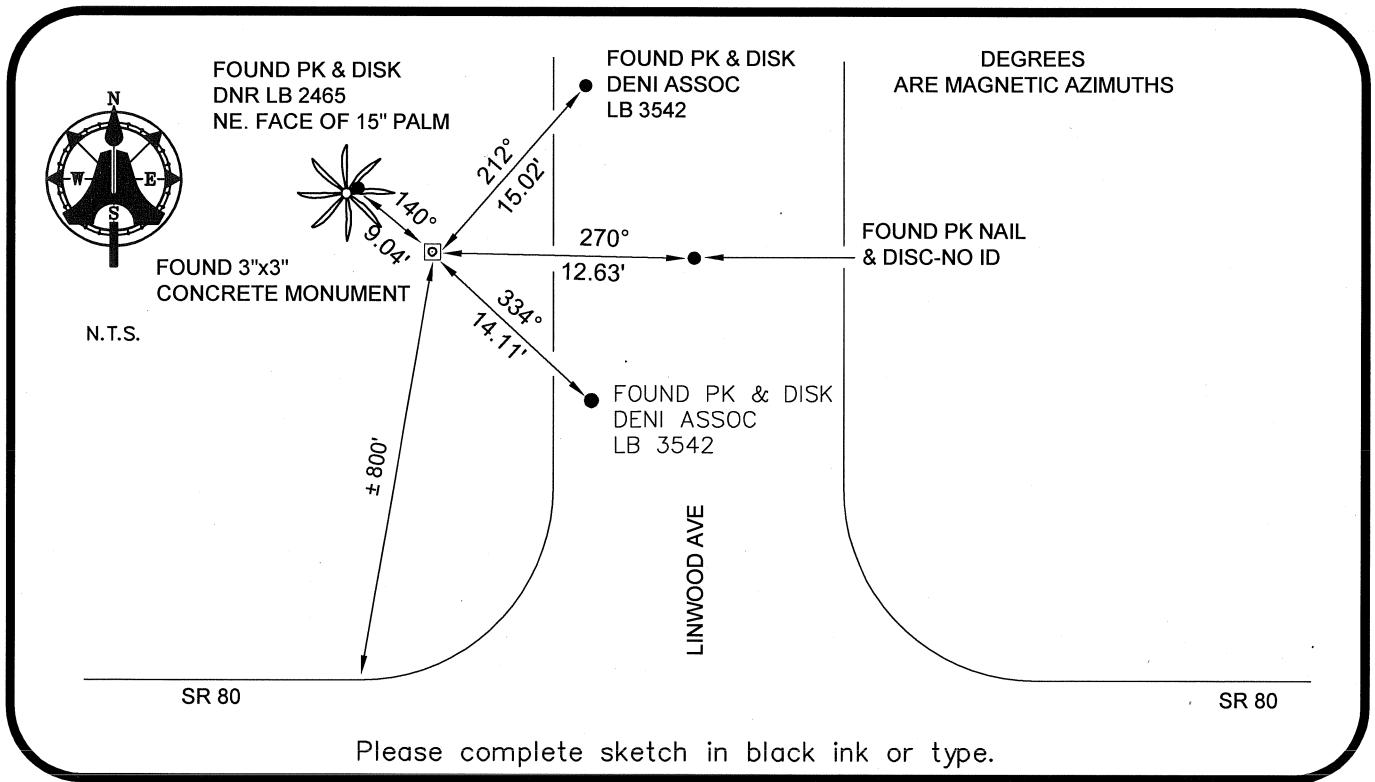
Y(NORTHING-Ft.) 865717.41 X(EASTING-Ft.) 752676.26 Zone WEST

Convergence 00°07'58.5" Scale factor 0.99995186

Coordinate determination: GPS

Horizontal datum: NAD83(NSRS2007)

Accuracy (circle one): 1st 2nd 3rd other 1:35,000



Please complete sketch in black ink or type.

### SURVEYORS CERTIFICATE:

I certify the monument and accessories indicated above were field located on 02-20-2008

BEN R. HOMOLA

*Ben R. Homola* 3950  
 SIGNATURE PSM NO.

AIM ENGINEERING & SURVEYING, INC. 3114  
 FIRM OR AGENCY LB NO.

5300 LEE BOULEVARD

LEHIGH ACRES ADDRESS FL 33971

(239)332-4569 CITY STATE ZIP

PHONE NUMBER DATE 07/30/2008

EMBOSSSED SEAL OVER SIGNATURE

SEND ORIGINAL TO:  
 Department of Environmental Protection  
 Bureau of Surveying and Mapping  
 3900 Commonwealth Boulevard  
 Mail Station 105  
 Tallahassee, Florida 32399

D.E.P. USE ONLY	
Processed:	_____
B.L.M. - I.D.	_____
QUAD - I.D.	_____