

FLORIDA DEPARTMENT OF ENVIRONMENTAL PROTECTION

CERTIFIED CORNER RECORD

81

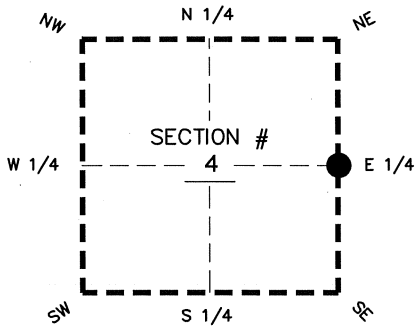
DOC. # _____

BLM. # T43SR26E400640

CORNER DESCRIPTION: **MONUMENTATION DESCRIPTION (EVIDENCE FOUND OR METHOD TO SET)**

Depict corner with

FOUND 3.5"x3.5" CONCRETE MONUMENT
TOP BROKEN, BASE REMAINED STABLE
0.5' BELOW GROUND



E 1/4 corner of Section 4
Twp 43 S, Rge 26 E
Tallahassee Base Meridian,
LEE County(s), Florida

PRIOR CCR'S:

DOC. # 020874, 089404

HORIZONTAL POSITION INFORMATION (if determined):

Latitude 26°45'42.8538" N Longitude 81°42'44.4844" W
Y(NORTHING-Ft.) 882729.50 X(EASTING-Ft.) 750025.63 Zone WEST
Convergence 00°07'46.3" Scale factor 0.99995128

Coordinate determination: GPS

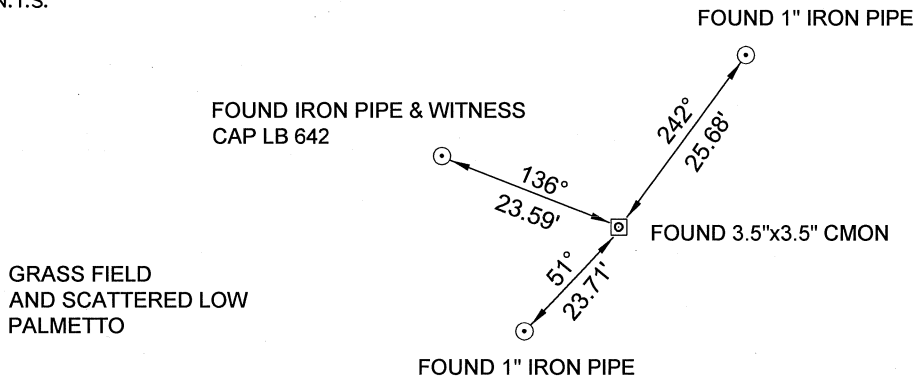
Horizontal datum: NAD83(NSRS2007)

Accuracy (circle one): 1st 2nd 3rd other 1:35,000



N.T.S.

DEGREES
ARE MAGNETIC AZIMUTHS



Please complete sketch in black ink or type.

SURVEYORS CERTIFICATE:

I certify the monument and accessories indicated above were field located on 03-26-2008

BEN R. HOMOLA

Ben R. Homola 3950
SIGNATURE PSM NO.

AIM ENGINEERING & SURVEYING, INC. 3114
FIRM OR AGENCY LB NO.

5300 LEE BOULEVARD
LEHIGH ACRES ADDRESS FL 33971

(239)332-4569 07/30/2008 ZIP
PHONE NUMBER DATE

EMBOSSSED SEAL OVER SIGNATURE

SEND ORIGINAL TO:
Department of Environmental Protection
Bureau of Surveying and Mapping
3900 Commonwealth Boulevard
Mail Station 105
Tallahassee, Florida 32399

D.E.P. USE ONLY	
Processed:	_____
B.L.M. - I.D.	_____
QUAD - I.D.	_____