


140

FLORIDA DEPARTMENT OF ENVIRONMENTAL PROTECTION CERTIFIED CORNER RECORD

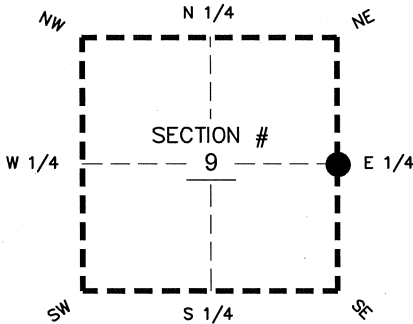
DOC. # _____

BLM. # T43SR26E400540

CORNER DESCRIPTION: MONUMENTATION DESCRIPTION (EVIDENCE FOUND OR METHOD TO SET)

Depict corner with 

FOUND 3.5"x3.5" CONCRETE MONUMENT, NO ID, 0.8' BELOW GROUND



E 1/4 corner of Section 9
 Twp 43 S, Rge 26 E
 Tallahassee Base Meridian,
LEE County(s), Florida

PRIOR CCR'S:

DOC. # N/A

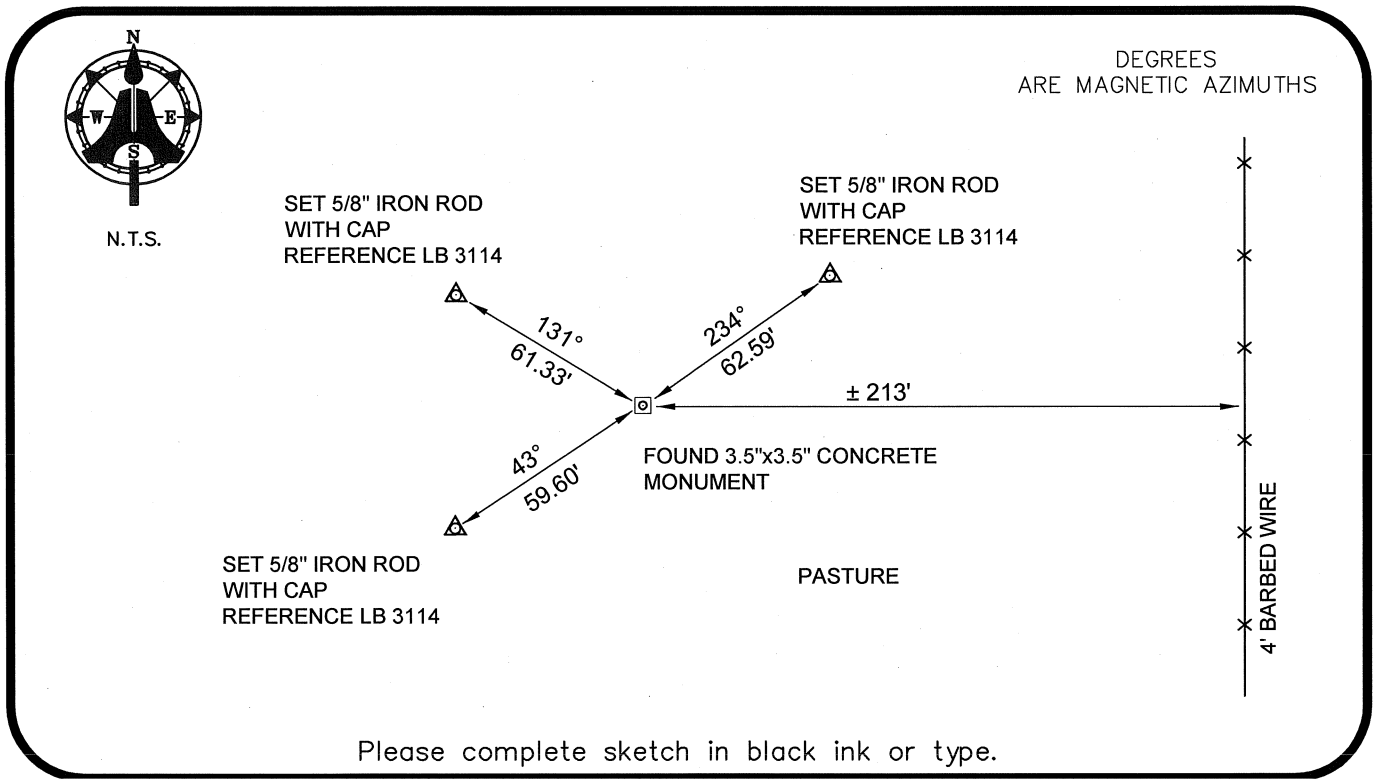
HORIZONTAL POSITION INFORMATION (if determined):

Latitude 26°44'50.0501" N Longitude 81°42'45.2375" W
 Y(NORTHING-Ft.) 877397.69 X(EASTING-Ft.) 749969.41 Zone WEST
 Convergence 00°07'45.7" Scale factor 0.99995126

Coordinate determination: GPS

Horizontal datum: NAD83(NSRS2007)

Accuracy (circle one): 1st 2nd 3rd other 1:35,000



SURVEYORS CERTIFICATE:

I certify the monument and accessories indicated above were field located on 08-04-2008

BEN R. HOMOLA

 3950
 SIGNATURE PSM NO.

AIM ENGINEERING & SURVEYING, INC. 3114
 FIRM OR AGENCY LB NO.

5300 LEE BOULEVARD
 LEHIGH ACRES ADDRESS FL 33971

(239)332-4569 08/05/2008 ZIP
 PHONE NUMBER DATE

EMBOSSSED SEAL OVER SIGNATURE

SEND ORIGINAL TO:
 Department of Environmental Protection
 Bureau of Surveying and Mapping
 3900 Commonwealth Boulevard
 Mail Station 105
 Tallahassee, Florida 32399

D.E.P. USE ONLY	
Processed:	_____
B.L.M. - I.D.	_____
QUAD - I.D.	_____