


FLORIDA DEPARTMENT OF ENVIRONMENTAL PROTECTION CERTIFIED CORNER RECORD

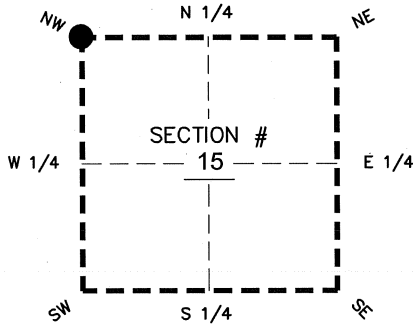
DOC. # _____

BLM. # T43SR26E400500

CORNER DESCRIPTION: MONUMENTATION DESCRIPTION (EVIDENCE FOUND OR METHOD TO SET)

Depict corner with 

FOUND 4" X 4" CONCRETE MONUMENT "STARNES & ASSOC."
PROJECTS 0.2' ABOVE GROUND



PRIOR CCR'S:

DOC. # 0035184, 0036594, 089419

HORIZONTAL POSITION INFORMATION (if determined):

Latitude 26°44'23.7045" N Longitude 81°42'45.5100" W

Y(NORTHING-Ft.) 874737.49 X(EASTING-Ft.) 749950.71 Zone WEST

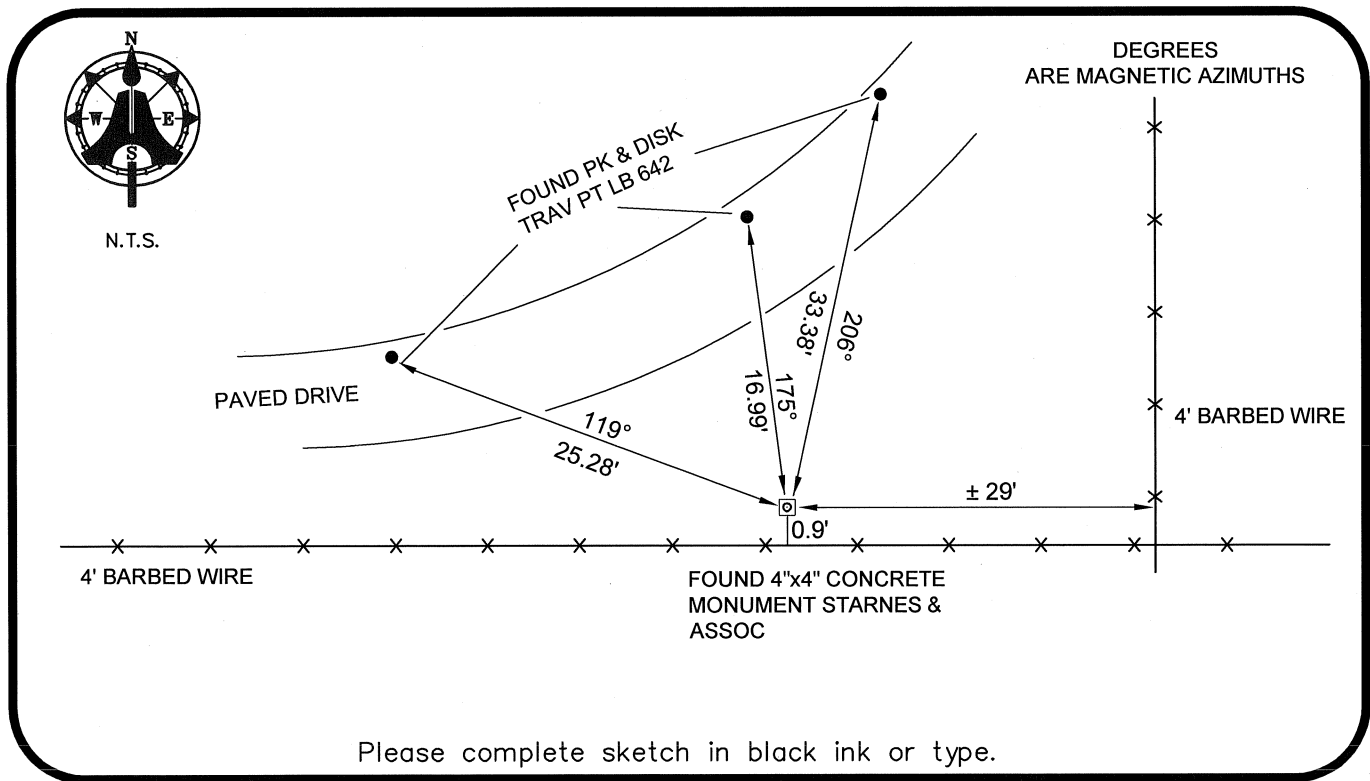
Convergence 00°07'45.5 Scale factor 0.99995126

Coordinate determination: GPS

Horizontal datum: NAD83(NSRS2007)

Accuracy (circle one): 1st 2nd 3rd other 1:35,000

NW corner of Section 15
Twp 43 S, Rge 26 E
Tallahassee Base Meridian,
LEE County(s), Florida



Please complete sketch in black ink or type.

SURVEYORS CERTIFICATE:

I certify the monument and accessories indicated above were field located on 03-05-2008

BEN R. HOMOLA

Ben R. Homola 3950
SIGNATURE PSM NO.

AIM ENGINEERING & SURVEYING, INC. 3114
FIRM OR AGENCY LB NO.

5300 LEE BOULEVARD
LEHIGH ACRES ADDRESS FL 33971

(239)332-4569 CITY STATE ZIP
PHONE NUMBER DATE

EMBOSSSED SEAL OVER SIGNATURE

SEND ORIGINAL TO:
Department of Environmental Protection
Bureau of Surveying and Mapping
3900 Commonwealth Boulevard
Mail Station 105
Tallahassee, Florida 32399

D.E.P. USE ONLY	
Processed:	_____
B.L.M. - I.D.	_____
QUAD - I.D.	_____