

FLORIDA DEPARTMENT OF ENVIRONMENTAL PROTECTION  
CERTIFIED CORNER RECORD

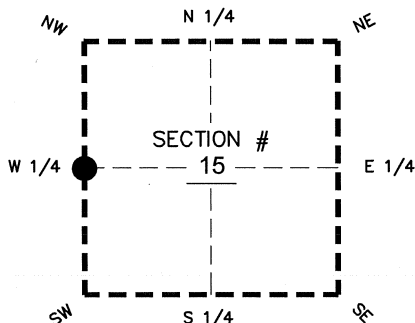
DOC. # \_\_\_\_\_

BLM. # T43SR26E400440

CORNER DESCRIPTION: MONUMENTATION DESCRIPTION (EVIDENCE FOUND OR METHOD TO SET)

Depict corner with ●

FOUND 60D NAIL IN CUT-OUT, 0.2' BELOW ASPHALT PAVEMENT



PRIOR CCR'S:

DOC. # 35183, 36600

HORIZONTAL POSITION INFORMATION ( if determined ):

Latitude 26°43'57.3582" N Longitude 81°42'45.8818" W

Y(NORTHING-Ft.) 872077.21 X(EASTING-Ft.) 749923.00 Zone WEST

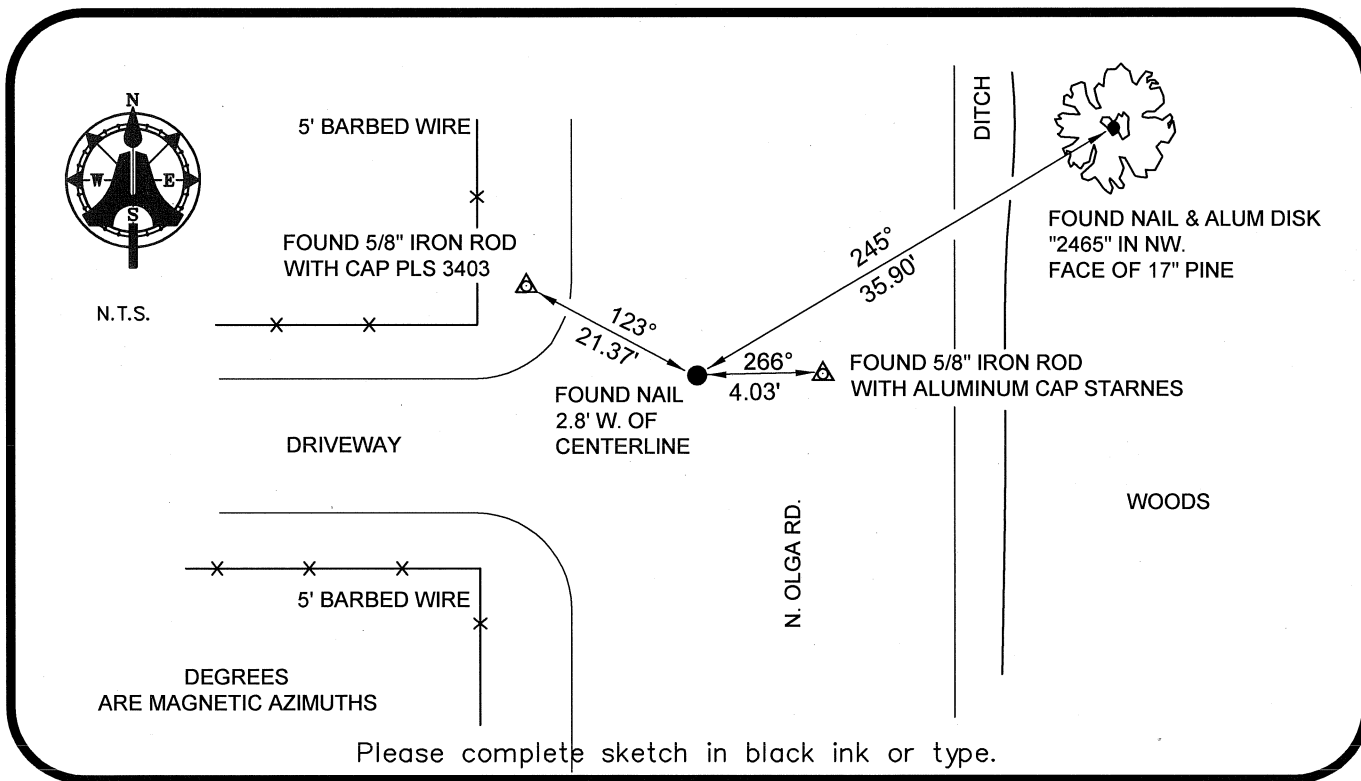
Convergence 00°07'45.2" Scale factor 0.99995125

Coordinate determination: GPS

Horizontal datum: NAD83(NSRS2007)

Accuracy (circle one): 1st 2nd 3rd other 1:35,000

W 1/4 corner of Section 15  
Twp 43 S, Rge 26 E  
Tallahassee Base Meridian,  
LEE County(s), Florida



SURVEYORS CERTIFICATE:

I certify the monument and accessories indicated above were field located on 03-11-2008

BEN R. HOMOLA

*Ben R. Homola* 3950  
SIGNATURE PSM NO.

AIM ENGINEERING & SURVEYING, INC. 3114  
FIRM OR AGENCY LB NO.

5300 LEE BOULEVARD  
LEHIGH ACRES ADDRESS FL 33971

(239)332-4569 CITY STATE ZIP  
PHONE NUMBER DATE

EMBOSSSED SEAL OVER SIGNATURE

SEND ORIGINAL TO:  
Department of Environmental Protection  
Bureau of Surveying and Mapping  
3900 Commonwealth Boulevard  
Mail Station 105  
Tallahassee, Florida 32399

D.E.P. USE ONLY  
Processed: \_\_\_\_\_  
B.L.M. - I.D. \_\_\_\_\_  
QUAD - I.D. \_\_\_\_\_