

FLORIDA DEPARTMENT OF ENVIRONMENTAL PROTECTION
CERTIFIED CORNER RECORD

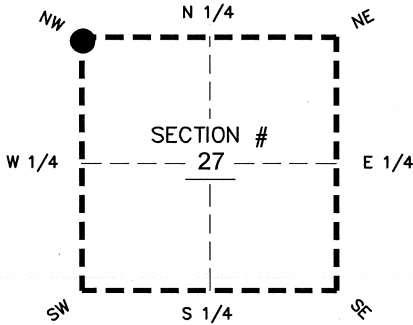
DOC. # _____

BLM. # T43SR26E400300

CORNER DESCRIPTION: MONUMENTATION DESCRIPTION (EVIDENCE FOUND OR METHOD TO SET)

Depict corner with ●

FOUND 80 D NAIL IN CUT OUT, 0.3' BELOW ASPHALT



NW corner of Section 27
Twp 43 S, Rge 26 E
Tallahassee Base Meridian,
LEE County(s), Florida

PRIOR CCR'S:

DOC. # 0035190, 083349

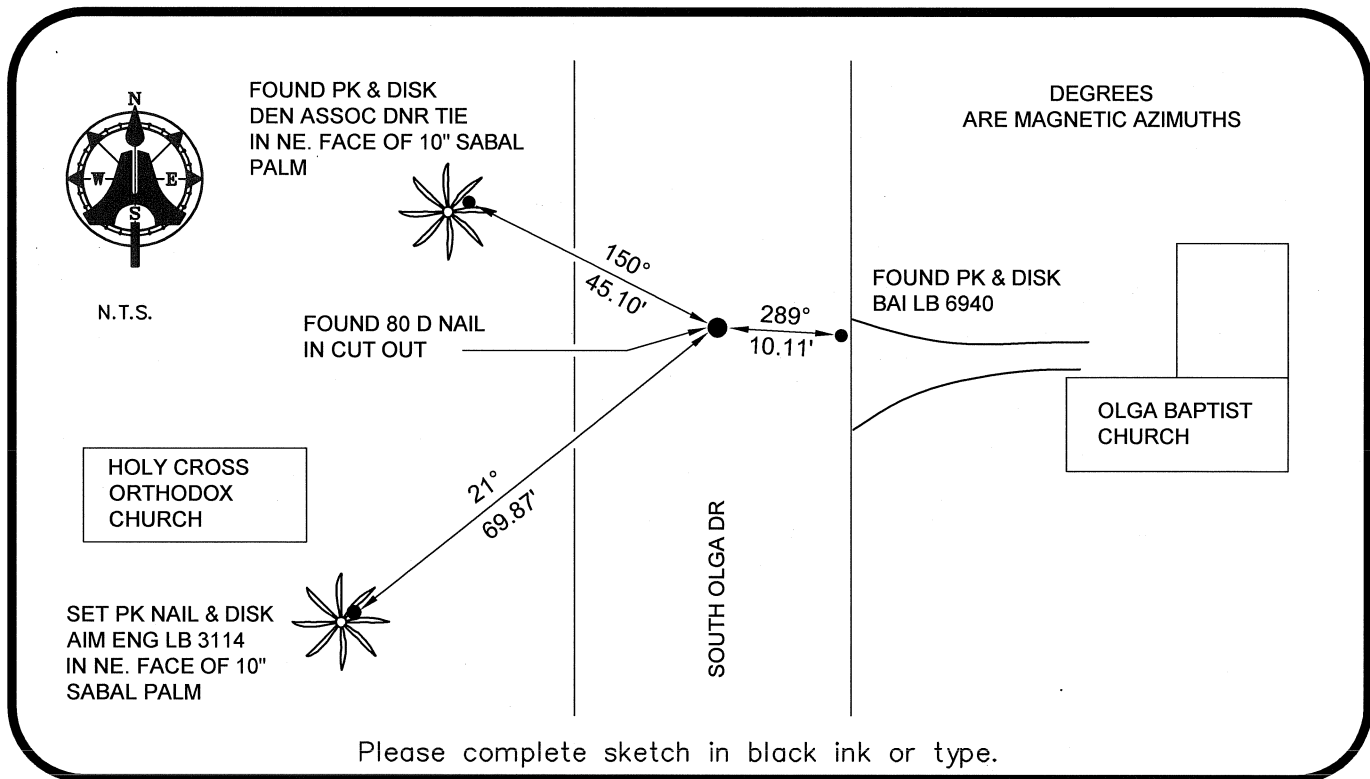
HORIZONTAL POSITION INFORMATION (if determined):

Latitude 26°42'53.8327" N Longitude 81°42'44.7107" W
Y(NORTHING-Ft.) 865663.22 X(EASTING-Ft.) 750043.66 Zone WEST
Convergence 00°07'45.4" Scale factor 0.99995128

Coordinate determination: GPS

Horizontal datum: NAD83(NSRS2007)

Accuracy (circle one): 1st 2nd 3rd other 1:35,000



Please complete sketch in black ink or type.

SURVEYORS CERTIFICATE:

I certify the monument and accessories indicated above were field located on 02-21-2008

BEN R. HOMOLA

Ben R. Homola

3950

SIGNATURE

PSM NO. 3114

AIM ENGINEERING & SURVEYING, INC.

FIRM OR AGENCY

LB NO.

5300 LEE BOULEVARD

LEHIGH ACRES ADDRESS FL 33971

(239)332-4569 CITY STATE ZIP

PHONE NUMBER

DATE

07/30/2008

EMBOSSSED SEAL OVER SIGNATURE

SEND ORIGINAL TO:
Department of Environmental Protection
Bureau of Surveying and Mapping
3900 Commonwealth Boulevard
Mail Station 105
Tallahassee, Florida 32399

D.E.P. USE ONLY
Processed: _____
B.L.M. - I.D. _____
QUAD - I.D. _____