

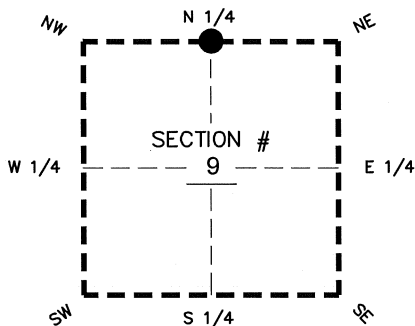
FLORIDA DEPARTMENT OF ENVIRONMENTAL PROTECTION
CERTIFIED CORNER RECORD

DOC. # _____
BLM. # T43SR26E340600

CORNER DESCRIPTION: MONUMENTATION DESCRIPTION (EVIDENCE FOUND OR METHOD TO SET)

Depict corner with ●

FOUND 3.5"x3.5" CONCRETE MONUMENT WITH PIN FLUSH WITH GROUND



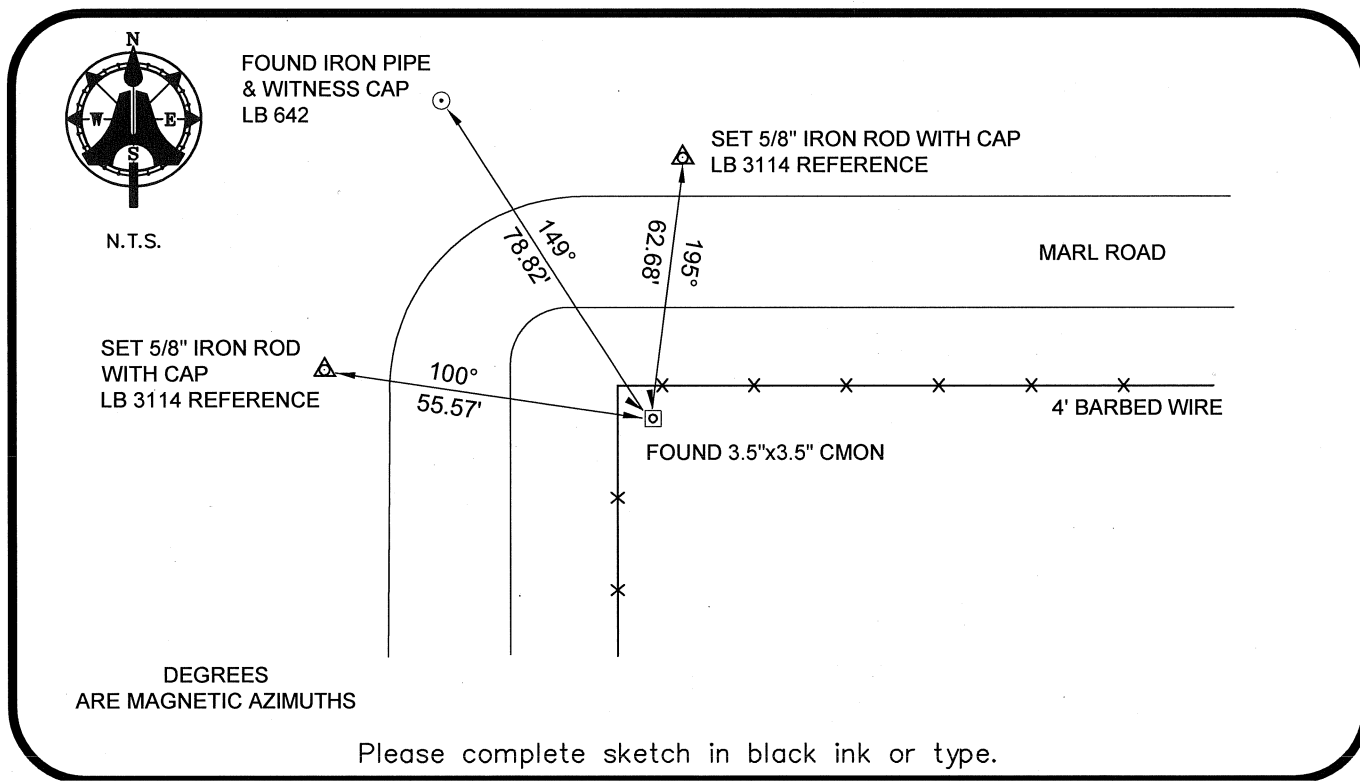
N 1/4 corner of Section 9
Twp 43 S, Rge 26 E
Tallahassee Base Meridian,
LEE County(s), Florida

PRIOR CCR'S:

DOC. # 089418

HORIZONTAL POSITION INFORMATION (if determined):

Latitude 26°45'16.5167" N Longitude 81°43'14.2068" W
Y(NORTHING-Ft.) 880064.21 X(EASTING-Ft.) 747337.42 Zone WEST
Convergence 00°07'32.8" Scale factor 0.99995071
Coordinate determination: GPS
Horizontal datum: NAD83(NSRS2007)
Accuracy (circle one): 1st 2nd 3rd other 1:35,000



SURVEYORS CERTIFICATE:

I certify the monument and accessories indicated above were field located on 03-26-2008

BEN R. HOMOLA

Ben R. Homola 3950
SIGNATURE PSM NO.

AIM ENGINEERING & SURVEYING, INC. 3114
FIRM OR AGENCY LB NO.

5300 LEE BOULEVARD
LEHIGH ACRES ADDRESS FL 33971

(239)332-4569 CITY STATE ZIP
PHONE NUMBER DATE

EMBOSSSED SEAL OVER SIGNATURE

SEND ORIGINAL TO:
Department of Environmental Protection
Bureau of Surveying and Mapping
3900 Commonwealth Boulevard
Mail Station 105
Tallahassee, Florida 32399

D.E.P. USE ONLY
Processed: _____
B.L.M. - I.D. _____
QUAD - I.D. _____