

FLORIDA DEPARTMENT OF ENVIRONMENTAL PROTECTION

CERTIFIED CORNER RECORD

90

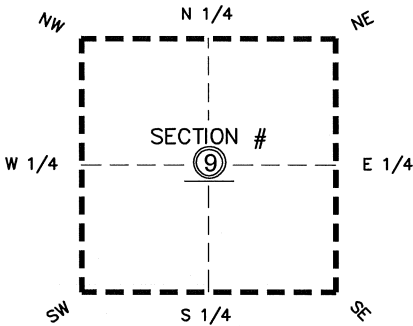
DOC. # _____

BLM. # T43SR26E340540

CORNER DESCRIPTION: **MONUMENTATION DESCRIPTION (EVIDENCE FOUND OR METHOD TO SET)**

Depict corner with

FOUND 3.5"x3.5" CONCRETE MONUMENT, TOP BROKEN
PROJECTS 1.7' ABOVE GROUND



CENTER corner of Section 9
Twp 43 S, Rge 26 E
Tallahassee Base Meridian,
LEE County(s), Florida

PRIOR CCR'S:

DOC. # 089422

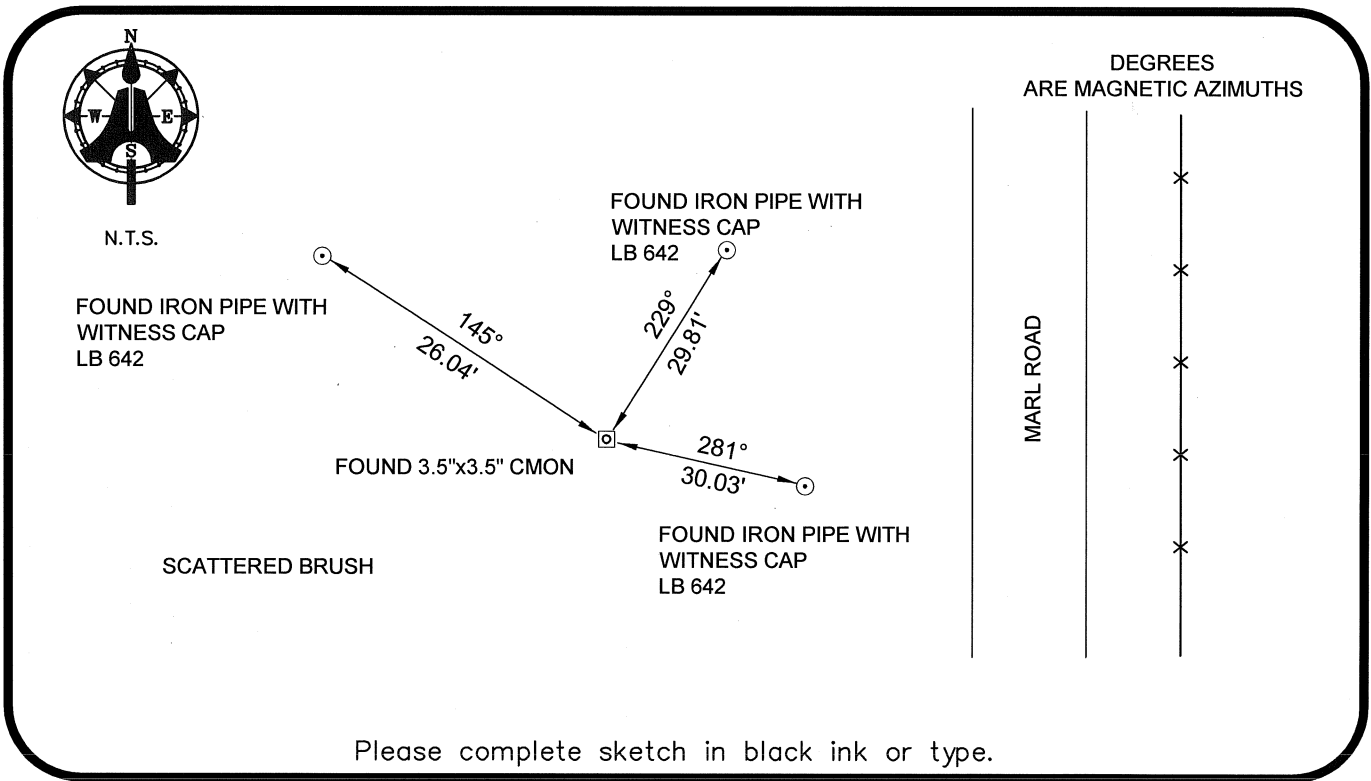
HORIZONTAL POSITION INFORMATION (if determined):

Latitude 26°44'50.1627" N Longitude 81°43'14.4778" W
Y(NORTHING-Ft.) 877403.16 X(EASTING-Ft.) 747318.69 Zone WEST
Convergence 00°07'32.5" Scale factor 0.99995070

Coordinate determination: GPS

Horizontal datum: NAD83(NSRS2007)

Accuracy (circle one): 1st 2nd 3rd other 1:35,000



SURVEYORS CERTIFICATE:

I certify the monument and accessories indicated above were field located on 03-26-2008

BEN R. HOMOLA

Ben R. Homola 3950
SIGNATURE PSM NO.

AIM ENGINEERING & SURVEYING, INC. 3114
FIRM OR AGENCY LB NO.

5300 LEE BOULEVARD
LEHIGH ACRES ADDRESS FL 33971

(239)332-4569 CITY STATE ZIP
PHONE NUMBER DATE 07/30/2008

EMBOSSSED SEAL OVER SIGNATURE

SEND ORIGINAL TO:
Department of Environmental Protection
Bureau of Surveying and Mapping
3900 Commonwealth Boulevard
Mail Station 105
Tallahassee, Florida 32399

D.E.P. USE ONLY	
Processed: _____	
B.L.M. - I.D. _____	
QUAD - I.D. _____	