

FLORIDA DEPARTMENT OF ENVIRONMENTAL PROTECTION CERTIFIED CORNER RECORD

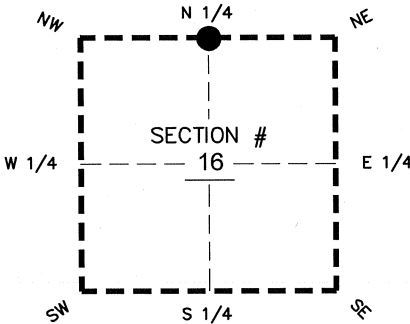
62

DOC. # _____
BLM. # T43SR26E340500

CORNER DESCRIPTION: MONUMENTATION DESCRIPTION (EVIDENCE FOUND OR METHOD TO SET)

Depict corner with

FOUND RAILROAD SPIKE, 0.2' BELOW ASPHALT



PRIOR CCR'S:

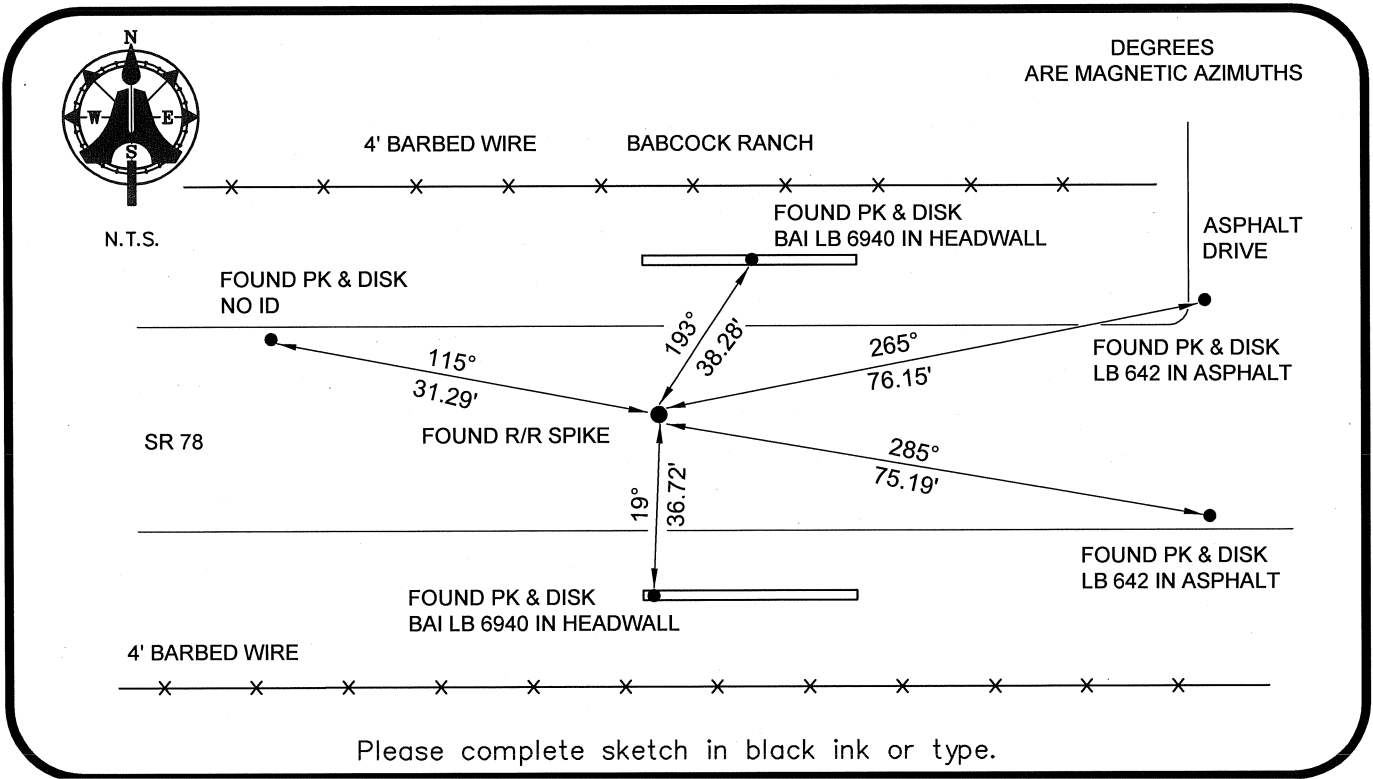
DOC. # 0035182, 0036593, 089420

HORIZONTAL POSITION INFORMATION (if determined):

Latitude 26°44'23.8015" N Longitude 81°43'14.7333" W
Y(NORTHING-Ft.) 874741.39 X(EASTING-Ft.) 747301.37 Zone WEST
Convergence 00°07'32.3" Scale factor 0.99995070

N 1/4 corner of Section 16
Twp 43 S, Rge 26 E
Tallahassee Base Meridian,
LEE County(s), Florida

Coordinate determination: GPS
Horizontal datum: NAD83(NSRS2007)
Accuracy (circle one): 1st 2nd 3rd other 1:35,000



SURVEYORS CERTIFICATE:

I certify the monument and accessories indicated above were field located on 03-04-2008

BEN R. HOMOLA

Ben R. Homola 3950
SIGNATURE PSM NO.

AIM ENGINEERING & SURVEYING, INC. 3114
FIRM OR AGENCY LB NO.

5300 LEE BOULEVARD
LEHIGH ACRES ADDRESS FL 33971

(239)332-4569 CITY STATE ZIP
PHONE NUMBER DATE

EMBOSSSED SEAL OVER SIGNATURE

SEND ORIGINAL TO:
Department of Environmental Protection
Bureau of Surveying and Mapping
3900 Commonwealth Boulevard
Mail Station 105
Tallahassee, Florida 32399

D.E.P. USE ONLY	
Processed:	_____
B.L.M. - I.D.	_____
QUAD - I.D.	_____