


FLORIDA DEPARTMENT OF ENVIRONMENTAL PROTECTION
CERTIFIED CORNER RECORD

DOC. # _____

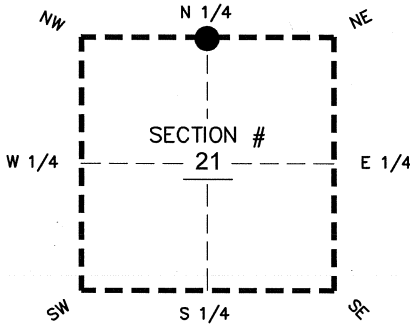
BLM. # T43SR26E340400

CORNER DESCRIPTION:

MONUMENTATION DESCRIPTION (EVIDENCE FOUND OR METHOD TO SET)

Depict corner with 

FOUND 3"x3" CONCRETE MONUMENT-JOHNSON ENG. INC. LB 642
PROJECTS 1.3' ABOVE GROUND



N 1/4 corner of Section 21
Twp 43 S, Rge 26 E
Tallahassee Base Meridian,
LEE County(s), Florida

PRIOR CCR'S:

DOC. # 0030652, 0035186

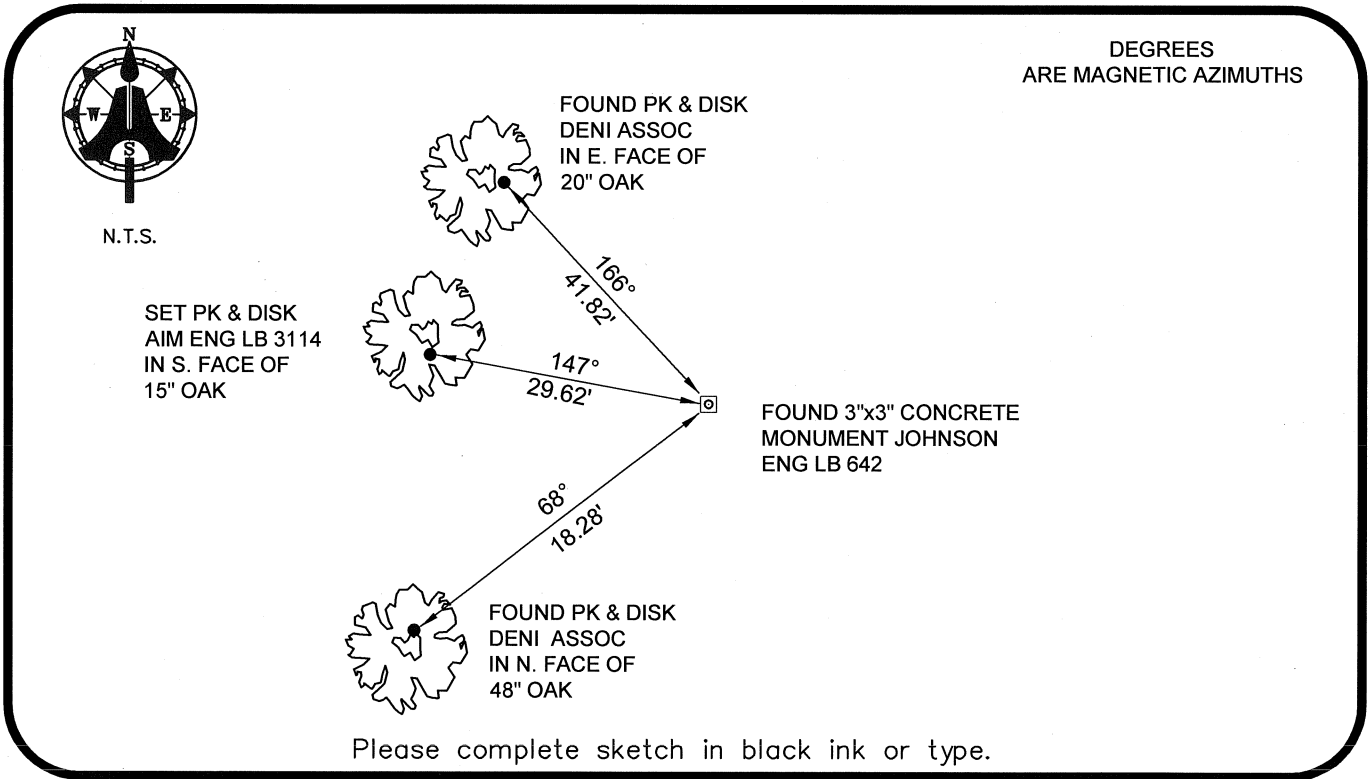
HORIZONTAL POSITION INFORMATION (if determined):

Latitude 26°43'30.8858" N Longitude 81°43'15.2706" W
Y(NORTHING-Ft.) 869398.33 X(EASTING-Ft.) 747264.36 Zone WEST
Convergence 00°07'31.8" Scale factor 0.99995069

Coordinate determination: GPS

Horizontal datum: NAD83(NSRS2007)

Accuracy (circle one): 1st 2nd 3rd other 1:35,000



DEGREES ARE MAGNETIC AZIMUTHS

N.T.S.

SET PK & DISK
AIM ENG LB 3114
IN S. FACE OF
15" OAK

FOUND PK & DISK
DENI ASSOC
IN E. FACE OF
20" OAK

FOUND 3"x3" CONCRETE
MONUMENT JOHNSON
ENG LB 642

FOUND PK & DISK
DENI ASSOC
IN N. FACE OF
48" OAK

Please complete sketch in black ink or type.

SURVEYORS CERTIFICATE:

I certify the monument and accessories indicated above were field located on 03-05-2008

BEN R. HOMOLA

Ben R. Homola 3950
SIGNATURE PSM NO.

AIM ENGINEERING & SURVEYING, INC. 3114

FIRM OR AGENCY LB NO.

5300 LEE BOULEVARD

LEHIGH ACRES ADDRESS FL 33971

(239)332-4569 CITY STATE ZIP

PHONE NUMBER DATE 07/30/2008

EMBOSSSED SEAL OVER SIGNATURE

SEND ORIGINAL TO:
Department of Environmental Protection
Bureau of Surveying and Mapping
3900 Commonwealth Boulevard
Mail Station 105
Tallahassee, Florida 32399

D.E.P. USE ONLY
Processed: _____
B.L.M. - I.D. _____
QUAD - I.D. _____