

FLORIDA DEPARTMENT OF ENVIRONMENTAL PROTECTION
CERTIFIED CORNER RECORD

DOC. # _____

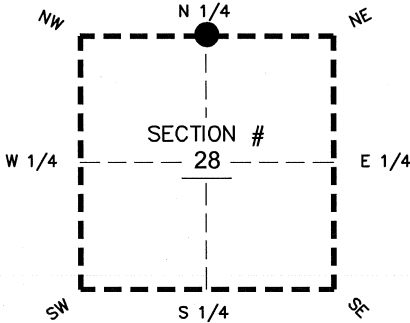
BLM. # T43SR26E340300

CORNER DESCRIPTION:

MONUMENTATION DESCRIPTION (EVIDENCE FOUND OR METHOD TO SET)

Depict corner with ●

FOUND 4" X 4" CONCRETE MONUMENT IN BAD CONDITION (USED REBAR IN CENTER OF BASE FOR LOCATION)



PRIOR CCR'S:

DOC. # 035191

HORIZONTAL POSITION INFORMATION (if determined):

Latitude 26°42'53.5040" N Longitude 81°43'13.7473" W

Y(NORTHING-Ft.) 865624.17 X(EASTING-Ft.) 747410.76 Zone WEST

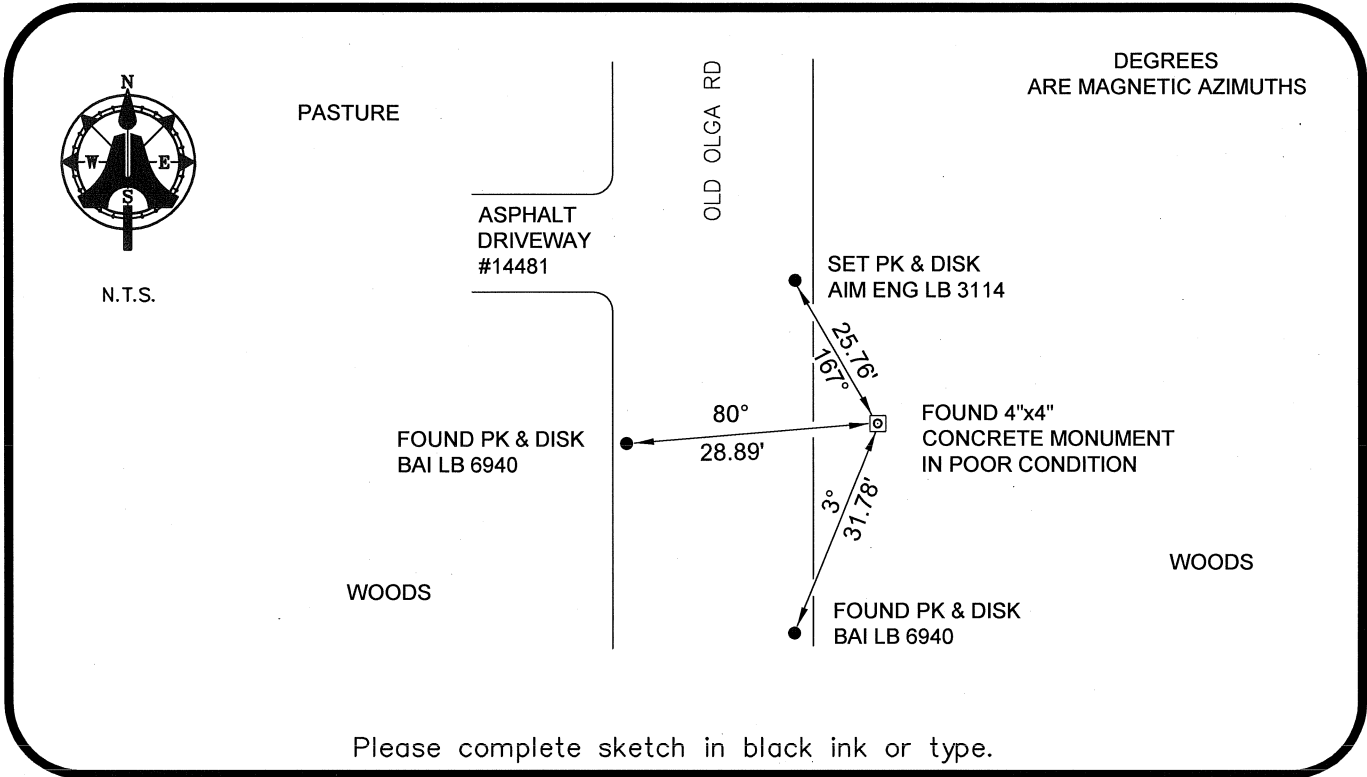
Convergence 00°07'32.4" Scale factor 0.99995072

Coordinate determination: GPS

Horizontal datum: NAD83(NSRS2007)

Accuracy (circle one): 1st 2nd 3rd other 1:35,000

N 1/4 corner of Section 28
Twp 43 S, Rge 26 E
Tallahassee Base Meridian,
LEE County(s), Florida



Please complete sketch in black ink or type.

SURVEYORS CERTIFICATE:

I certify the monument and accessories indicated above were field located on 02-26-2008

BEN R. HOMOLA

Ben R. Homola

3950

SIGNATURE

PSM NO.

AIM ENGINEERING & SURVEYING, INC.

3114

FIRM OR AGENCY

LB NO.

5300 LEE BOULEVARD

LEHIGH ACRES

ADDRESS

FL

33971

(239)332-4569

PHONE NUMBER

07/30/2008

STATE

ZIP

DATE

EMBOSSSED SEAL OVER SIGNATURE

SEND ORIGINAL TO:
Department of Environmental Protection
Bureau of Surveying and Mapping
3900 Commonwealth Boulevard
Mail Station 105
Tallahassee, Florida 32399

D.E.P. USE ONLY
Processed: _____
B.L.M. - I.D. _____
QUAD - I.D. _____