

FLORIDA DEPARTMENT OF ENVIRONMENTAL PROTECTION
CERTIFIED CORNER RECORD

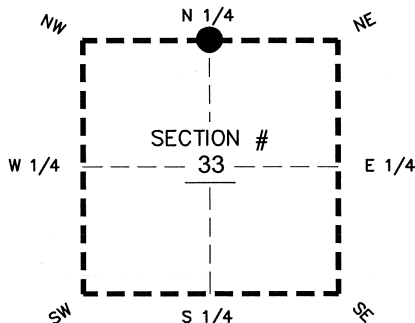
DOC. # _____

BLM. # T43SR26E340200

CORNER DESCRIPTION: MONUMENTATION DESCRIPTION (EVIDENCE FOUND OR METHOD TO SET)

Depict corner with 

FOUND 1" METAL PIPE IN BROKEN CONCRETE MONUMENT, NO ID FLUSH WITH GROUND



PRIOR CCR'S:

DOC. # N/A

HORIZONTAL POSITION INFORMATION (if determined):

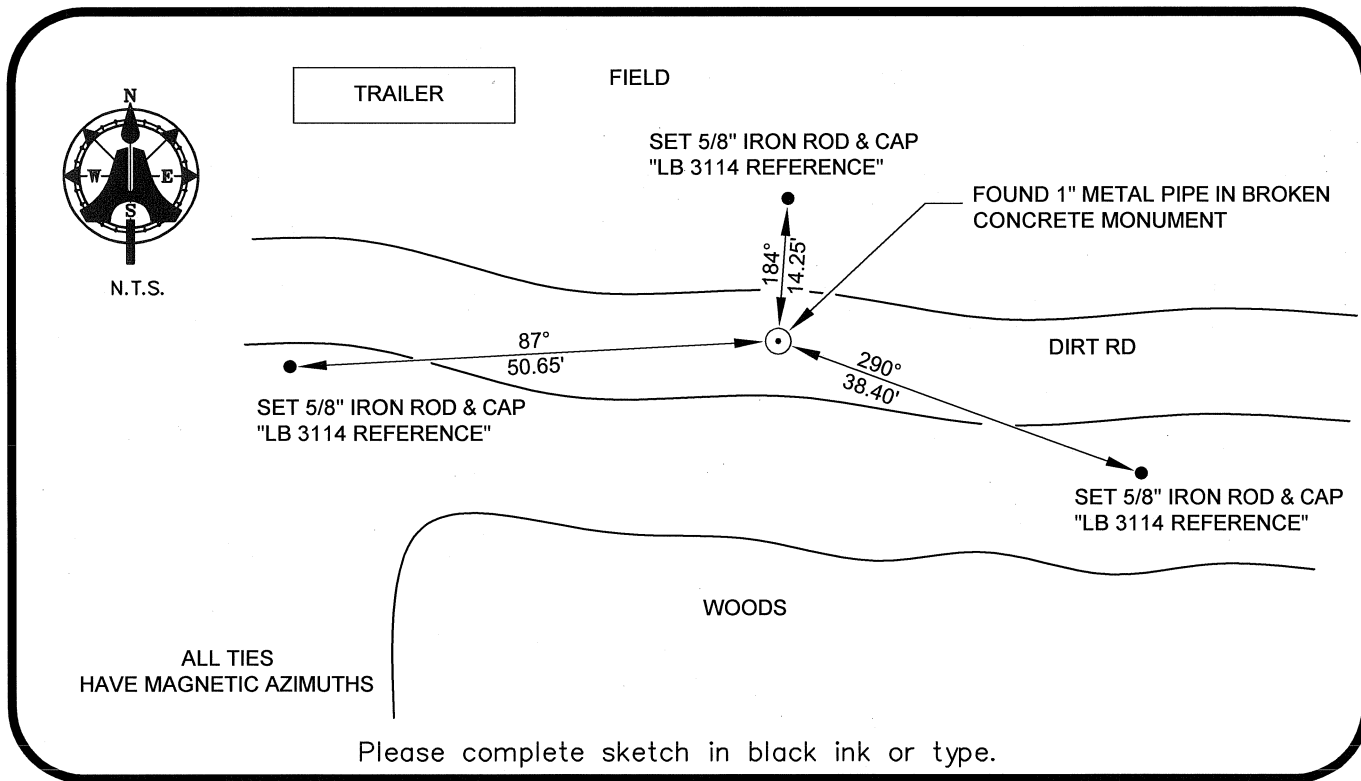
Latitude 26°42'01.1965" N Longitude 81°43'13.0450" W
Y(NORTHING-Ft.) 860342.79 X(EASTING-Ft.) 747486.04 Zone WEST
Convergence 00°07'32.5" Scale factor 0.99995074

Coordinate determination: GPS

Horizontal datum: NAD83(NSRS2007)

Accuracy (circle one): 1st 2nd 3rd other 1:35,000

N1/4 corner of Section 33
Twp 43 S, Rge 26 E
Tallahassee Base Meridian,
LEE County(s), Florida



Please complete sketch in black ink or type.

SURVEYORS CERTIFICATE:

I certify the monument and accessories indicated above were field located on 07/16/08

BEN R. HOMOLA

 3950

AIM ENGINEERING & SURVEYING, INC. 3114

5300 LEE BOULEVARD

LEHIGH ACRES ADDRESS FL 33970

(239)332-4569 07/30/2008

PHONE NUMBER

DATE

EMBOSSSED SEAL OVER SIGNATURE

SEND ORIGINAL TO:
Department of Environmental Protection
Bureau of Surveying and Mapping
3900 Commonwealth Boulevard
Mail Station 105
Tallahassee, Florida 32399

D.E.P. USE ONLY
Processed: _____
B.L.M. - I.D. _____
QUAD - I.D. _____