

# FLORIDA DEPARTMENT OF ENVIRONMENTAL PROTECTION

## CERTIFIED CORNER RECORD

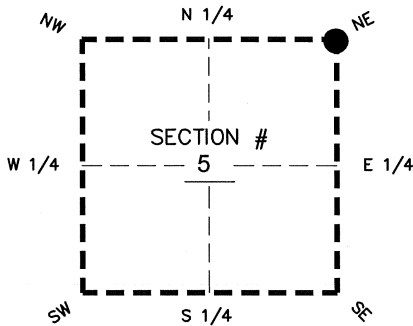
84

DOC. # \_\_\_\_\_  
 BLM. # T43SR26E300700

CORNER DESCRIPTION:      MONUMENTATION DESCRIPTION (EVIDENCE FOUND OR METHOD TO SET)

Depict corner with

FOUND 4"x4" CONCRETE MONUMENT, NO ID  
 PROJECTS 2.5' ABOVE GROUND



NE corner of Section 5  
 Twp 43 S, Rge 26 E  
 Tallahassee Base Meridian,  
LEE County(s), Florida

PRIOR CCR'S:

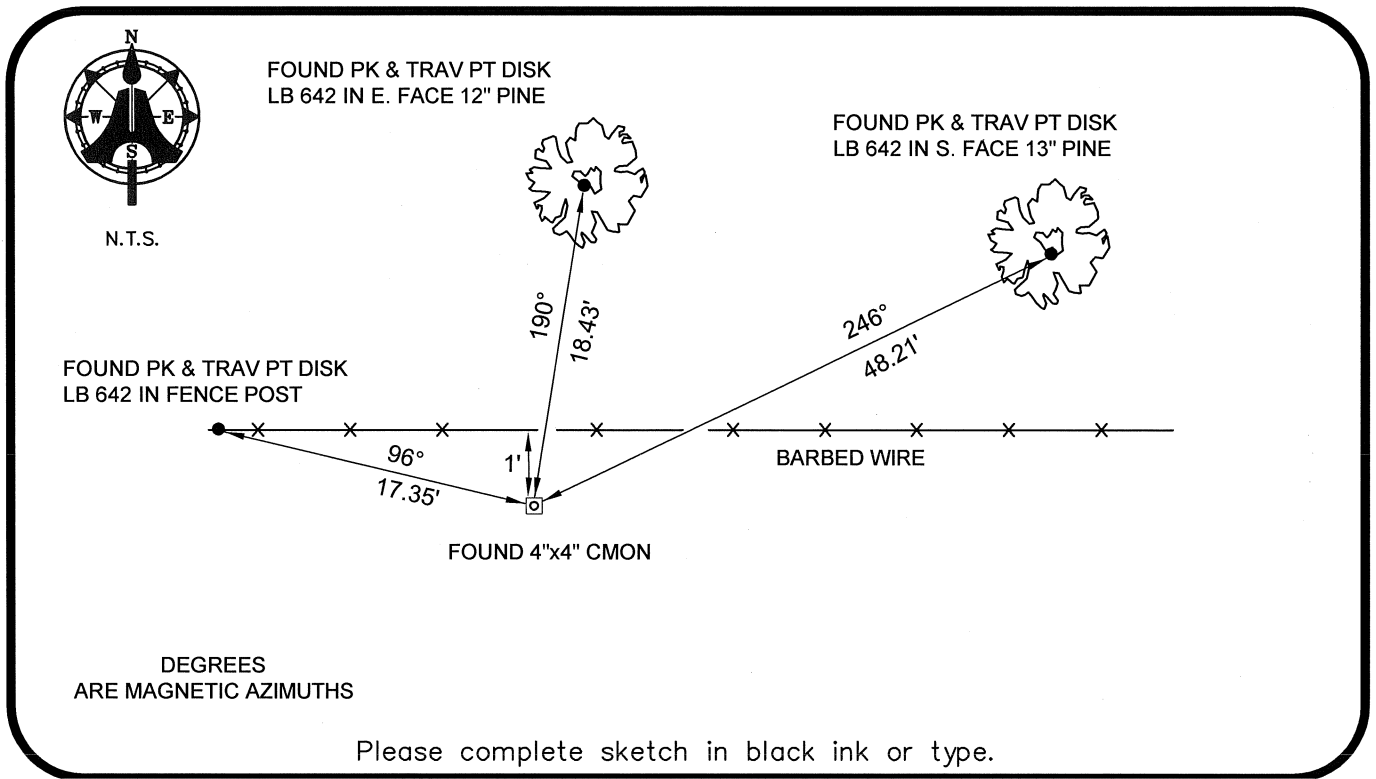
DOC. # 089405

HORIZONTAL POSITION INFORMATION ( if determined ):

Latitude 26°46'09.7980" N Longitude 81°43'42.3667" W  
 Y(NORTHING-Ft.) 885438.56 X(EASTING-Ft.) 744773.35 Zone WEST  
 Convergence 00°07'20.3" Scale factor 0.99995018

Coordinate determination: GPS  
 Horizontal datum: NAD83(NSRS2007)

Accuracy (circle one):      1st      2nd      3rd      other 1:35,000



Please complete sketch in black ink or type.

SURVEYORS CERTIFICATE:

I certify the monument and accessories indicated above were field located on 04-21-2008

BEN R. HOMOLA

*Ben R. Homola*      3950  
 SIGNATURE      PSM NO.

AIM ENGINEERING & SURVEYING, INC.      3114  
 FIRM OR AGENCY      LB NO.

5300 LEE BOULEVARD  
 LEHIGH ACRES      ADDRESS      FL      33971

(239)332-4569      07/30/2008      ZIP  
 PHONE NUMBER      DATE

EMBOSSSED SEAL OVER SIGNATURE

SEND ORIGINAL TO:  
 Department of Environmental Protection  
 Bureau of Surveying and Mapping  
 3900 Commonwealth Boulevard  
 Mail Station 105  
 Tallahassee, Florida 32399

D.E.P. USE ONLY	
Processed: _____	_____
B.L.M. - I.D. _____	_____
QUAD - I.D. _____	_____