


FLORIDA DEPARTMENT OF ENVIRONMENTAL PROTECTION  
CERTIFIED CORNER RECORD

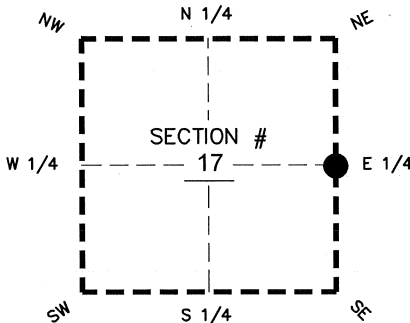
DOC. # \_\_\_\_\_

BLM. # T43SR26E300440

CORNER DESCRIPTION: MONUMENTATION DESCRIPTION (EVIDENCE FOUND OR METHOD TO SET)

Depict corner with 

FOUND 3.5"x3.5" CONCRETE MONUMENT WITH BRASS DISK STAMPED JOHNSON ENG, INC PRM PLS 0000, 0.2' BELOW GROUND



PRIOR CCR'S:

DOC. # N/A

HORIZONTAL POSITION INFORMATION ( if determined ):

Latitude 26°43'57.4550" N Longitude 81°43'44.2193" W

Y(NORTHING-Ft.) 872075.39 X(EASTING-Ft.) 744633.90 Zone WEST

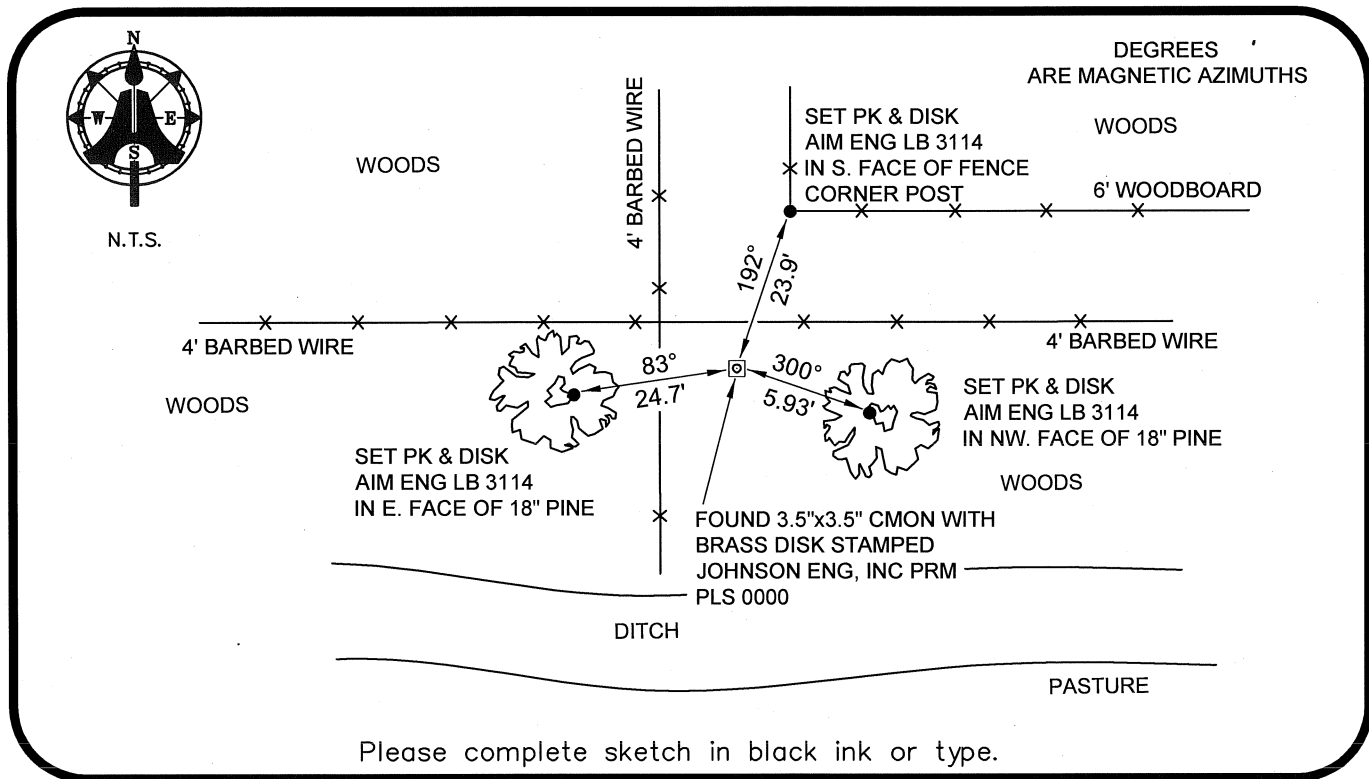
Convergence 00°07'18.9" Scale factor 0.99995015

Coordinate determination: GPS

Horizontal datum: NAD83(NSRS2007)

Accuracy (circle one): 1st 2nd 3rd other 1:35,000

E1/4 corner of Section 17  
Twp 43 S, Rge 26 E  
Tallahassee Base Meridian,  
LEE County(s), Florida



SURVEYORS CERTIFICATE:

07-31-2008

I certify the monument and accessories indicated above were field located on \_\_\_\_\_

BEN R. HOMOLA

*Ben R. Homola* 3950  
SIGNATURE PSM NO.

AIM ENGINEERING & SURVEYING, INC. 3114  
FIRM OR AGENCY LB NO.

5300 LEE BOULEVARD

LEHIGH ACRES ADDRESS FL 33971

CITY STATE ZIP  
(239)332-4569 08/04/2008

PHONE NUMBER DATE

EMBOSSSED SEAL OVER SIGNATURE

SEND ORIGINAL TO:  
Department of Environmental Protection  
Bureau of Surveying and Mapping  
3900 Commonwealth Boulevard  
Mail Station 105  
Tallahassee, Florida 32399

D.E.P. USE ONLY  
Processed: \_\_\_\_\_  
B.L.M. - I.D. \_\_\_\_\_  
QUAD - I.D. \_\_\_\_\_