

FLORIDA DEPARTMENT OF ENVIRONMENTAL PROTECTION
CERTIFIED CORNER RECORD

DOC. # _____

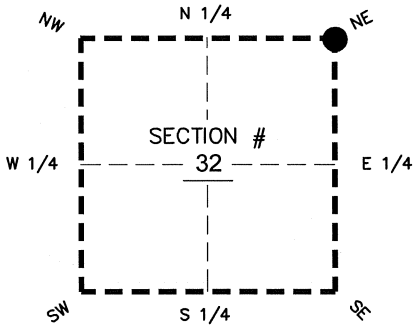
BLM. # T43SR26E300200

CORNER DESCRIPTION:

MONUMENTATION DESCRIPTION (EVIDENCE FOUND OR METHOD TO SET)

Depict corner with ●

SET 5/8" IRON ROD WITH CAP AIM ENG LB3114, CORNER NOT SET- FALLS IN LAKE, CORNER ESTABLISHED PER BOUNDARY SURVEY DONE FOR BONITA BAY "VERANDAH" BY JOHNSON ENGINEERING, INC. DATED JULY 1999



NE corner of Section 32
Twp 43 S, Rge 26 E
Tallahassee Base Meridian,
LEE County(s), Florida

PRIOR CCR'S:

DOC. # N/A

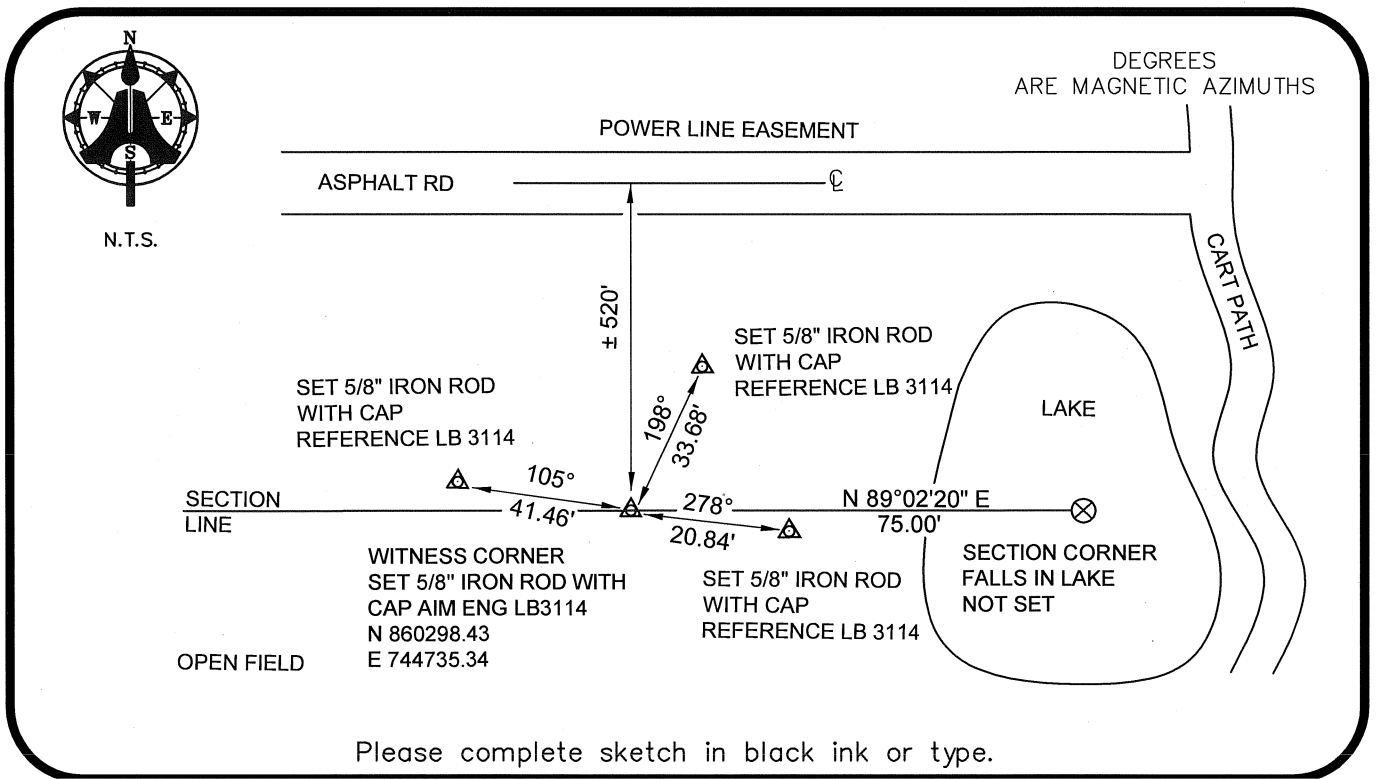
HORIZONTAL POSITION INFORMATION (if determined):

Latitude 26°42'00.8268" N Longitude 81°43'42.5500" W
Y(NORTHING-Ft.) 860299.69 X(EASTING-Ft.) 744810.33 Zone WEST
Convergence 00°07'19.2" Scale factor 0.99995019

Coordinate determination: GPS

Horizontal datum: NAD83(NSRS2007)

Accuracy (circle one): 1st 2nd 3rd other 1:35,000



Please complete sketch in black ink or type.

SURVEYORS CERTIFICATE:

I certify the monument and accessories indicated above were field located on 08-04-2008

BEN R. HOMOLA

Ben R. Homola 3950
SIGNATURE PSM NO.

AIM ENGINEERING & SURVEYING, INC. 3114
FIRM OR AGENCY LB NO.

5300 LEE BOULEVARD
LEHIGH ACRES ADDRESS FL 33971

(239)332-4569 CITY PHONE NUMBER 08/05/2008 STATE DATE ZIP

EMBOSSSED SEAL OVER SIGNATURE

SEND ORIGINAL TO:
Department of Environmental Protection
Bureau of Surveying and Mapping
3900 Commonwealth Boulevard
Mail Station 105
Tallahassee, Florida 32399

D.E.P. USE ONLY
Processed: _____
B.L.M. - I.D. _____
QUAD - I.D. _____