

112

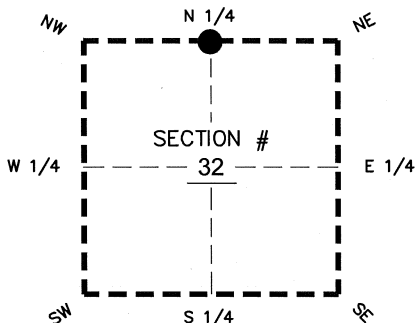
FLORIDA DEPARTMENT OF ENVIRONMENTAL PROTECTION  
CERTIFIED CORNER RECORD

DOC. # \_\_\_\_\_  
BLM. # T43SR26E240200

CORNER DESCRIPTION: MONUMENTATION DESCRIPTION (EVIDENCE FOUND OR METHOD TO SET)

Depict corner with ●

SET 5/8" IRON ROD WITH CAP AIM ENG LB 3114, CORNER ESTABLISHED PER BOUNDARY SURVEY DONE FOR BONITA BAY "VERANDAH" BY JOHNSON ENGINEERING, INC. DATED JULY 1999



PRIOR CCR'S:

DOC. # N/A

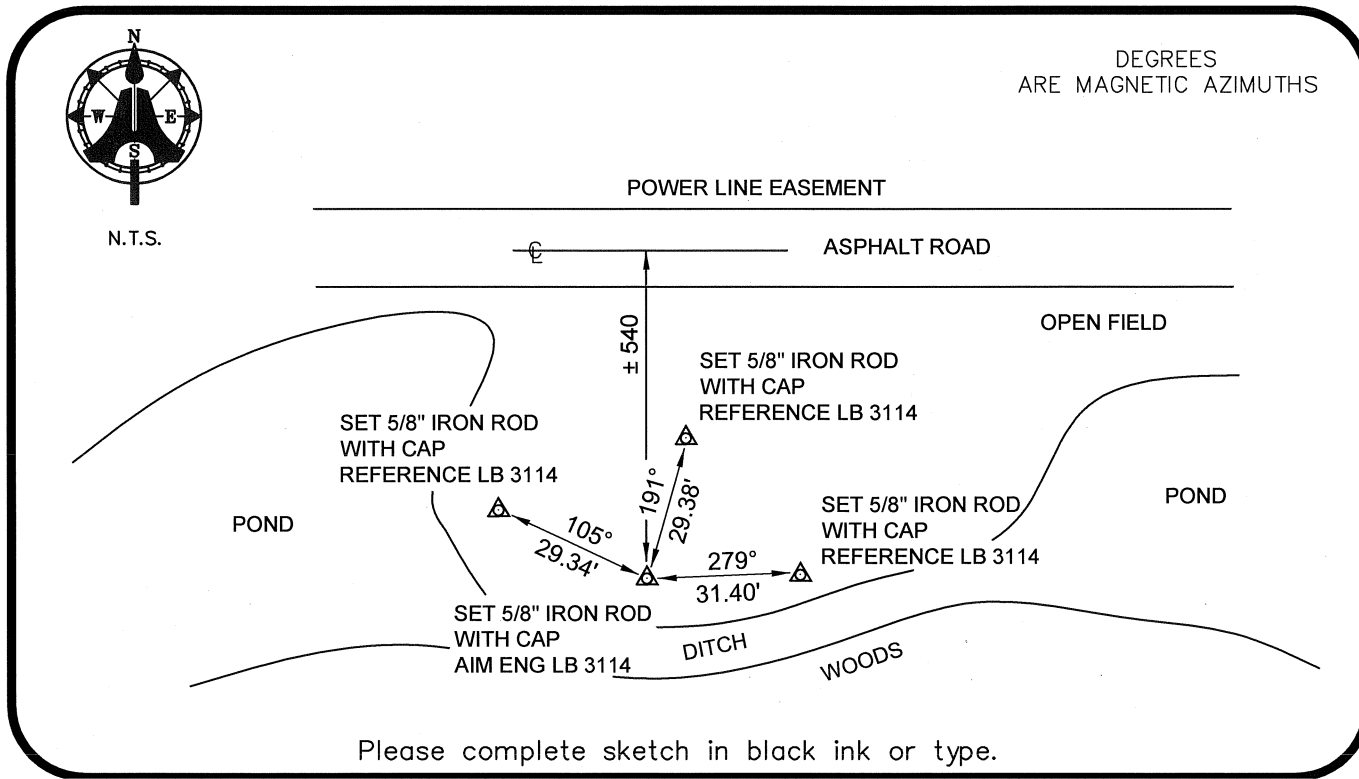
HORIZONTAL POSITION INFORMATION ( if determined ):

Latitude 26°42'00.4441" N Longitude 81°44'11.5793" W  
Y(NORTHING-Ft.) 860255.52 X(EASTING-Ft.) 742177.77 Zone WEST  
Convergence 00°07'06.1" Scale factor 0.99994966

Coordinate determination: GPS  
Horizontal datum: NAD83(NSRS2007)

Accuracy (circle one): 1st 2nd 3rd other 1:35,000

N 1/4 corner of Section 32  
Twp 43 S, Rge 26 E  
Tallahassee Base Meridian,  
LEE County(s), Florida



DEGREES ARE MAGNETIC AZIMUTHS

N.T.S.

Please complete sketch in black ink or type.

SURVEYORS CERTIFICATE:

I certify the monument and accessories indicated above were field located on 08-04-2008

BEN R. HOMOLA

*Ben R. Homola* 3950  
SIGNATURE PSM NO.

AIM ENGINEERING & SURVEYING, INC. 3114  
FIRM OR AGENCY LB NO.

5300 LEE BOULEVARD  
LEHIGH ACRES ADDRESS FL 33971

(239)332-4569 08/05/2008  
PHONE NUMBER DATE

EMBOSSSED SEAL OVER SIGNATURE

SEND ORIGINAL TO:  
Department of Environmental Protection  
Bureau of Surveying and Mapping  
3900 Commonwealth Boulevard  
Mail Station 105  
Tallahassee, Florida 32399

D.E.P. USE ONLY  
Processed: \_\_\_\_\_  
B.L.M. - I.D. \_\_\_\_\_  
QUAD - I.D. \_\_\_\_\_