


FLORIDA DEPARTMENT OF ENVIRONMENTAL PROTECTION
CERTIFIED CORNER RECORD

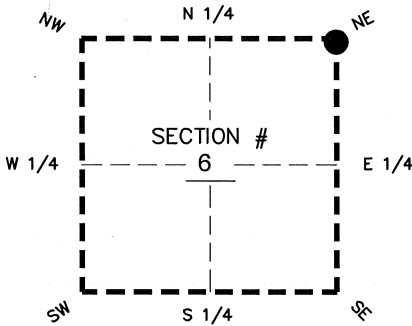
83

DOC. # _____
 BLM. # T43SR26E200700

CORNER DESCRIPTION: MONUMENTATION DESCRIPTION (EVIDENCE FOUND OR METHOD TO SET)

Depict corner with 

FOUND 3/4" IRON PIPE WITH CAP LB 642,
 0.5' BELOW GROUND



NE corner of Section 6
 Twp 43 S, Rge 26 E
 Tallahassee Base Meridian,
LEE County(s), Florida

PRIOR CCR'S:

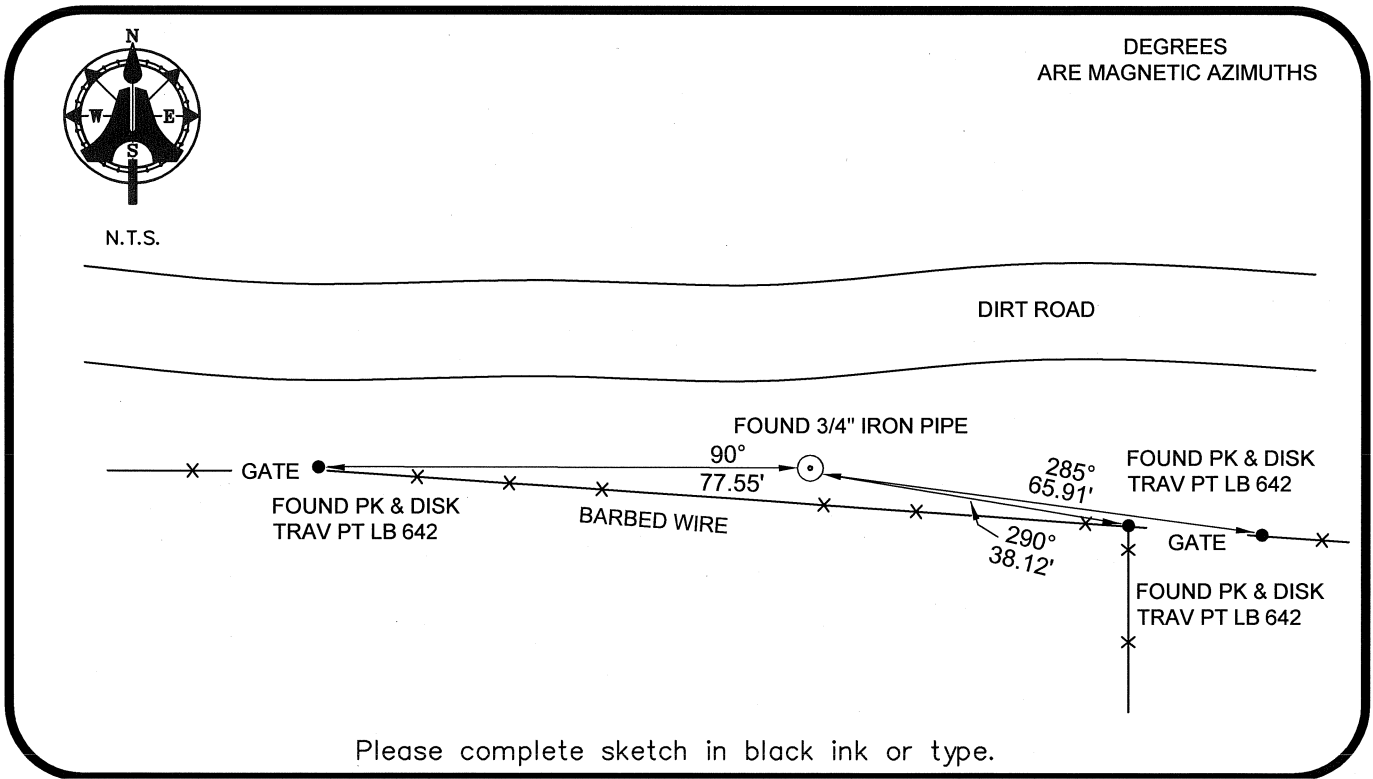
DOC. # 089407

HORIZONTAL POSITION INFORMATION (if determined):

Latitude 26°46'10.1850" N Longitude 81°44'40.9107" W
 Y(NORTHING-Ft.) 885466.65 X(EASTING-Ft.) 739467.18 Zone WEST
 Convergence 00°06'54.0" Scale factor 0.99994913

Coordinate determination: GPS
 Horizontal datum: NAD83(NSRS2007)

Accuracy (circle one): 1st 2nd 3rd other 1:35,000



SURVEYORS CERTIFICATE:

I certify the monument and accessories indicated above were field located on 04-21-2008

BEN R. HOMOLA

Ben R. Homola 3950
 SIGNATURE PSM NO.

AIM ENGINEERING & SURVEYING, INC. 3114
 FIRM OR AGENCY LB NO.

5300 LEE BOULEVARD
 LEHIGH ACRES ADDRESS FL 33971

(239)332-4569 07/30/2008 ZIP
 PHONE NUMBER DATE

EMBOSSSED SEAL OVER SIGNATURE

SEND ORIGINAL TO:
 Department of Environmental Protection
 Bureau of Surveying and Mapping
 3900 Commonwealth Boulevard
 Mail Station 105
 Tallahassee, Florida 32399

D.E.P. USE ONLY	
Processed:	_____
B.L.M. - I.D.	_____
QUAD - I.D.	_____