


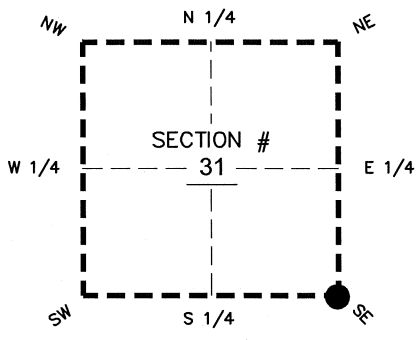
FLORIDA DEPARTMENT OF ENVIRONMENTAL PROTECTION CERTIFIED CORNER RECORD

DOC. # _____
BLM. # T43SR26E200100

CORNER DESCRIPTION: MONUMENTATION DESCRIPTION (EVIDENCE FOUND OR METHOD TO SET)

Depict corner with 

CORNER NOT SET-FALLS IN ORANGE RIVER, CORNER ESTABLISHED PER BOUNDARY SURVEY DONE FOR BONITA BAY "VERANDAH" BY JOHNSON ENGINEERING, INC. DATED JULY 1999



SE corner of Section 31
Twp 43 S, Rge 26 E
Tallahassee Base Meridian,
LEE County(s), Florida

PRIOR CCR'S:

DOC. # N/A

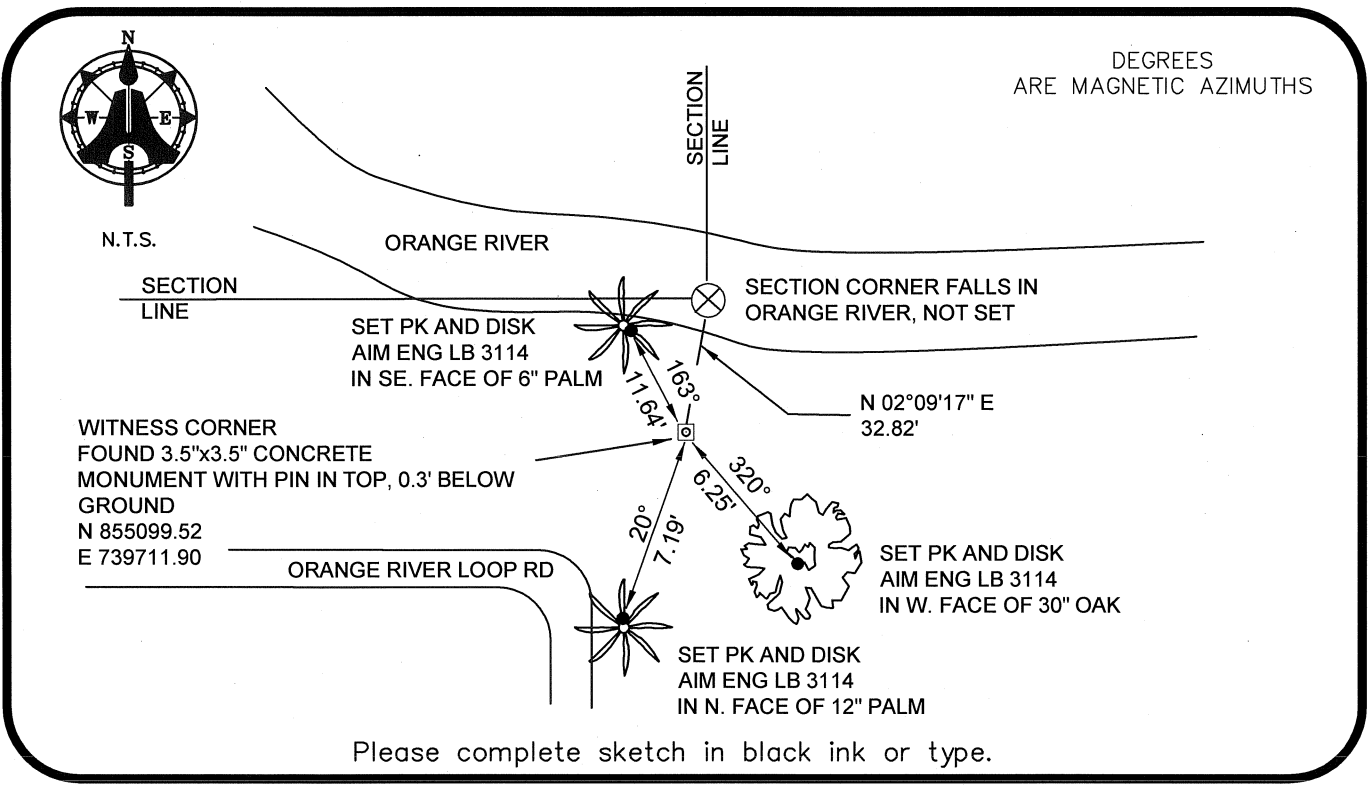
HORIZONTAL POSITION INFORMATION (if determined):

Latitude 26°41'09.7544" N Longitude 81°44'38.8692" W
Y(NORTHING-Ft.) 855132.32 X(EASTING-Ft.) 739713.14 Zone WEST
Convergence 00°06'53.7" Scale factor 0.99994918

Coordinate determination: GPS

Horizontal datum: NAD83(NSRS2007)

Accuracy (circle one): 1st 2nd 3rd other 1:35,000



Please complete sketch in black ink or type.

SURVEYORS CERTIFICATE:

I certify the monument and accessories indicated above were field located on 08-04-2008

BEN R. HOMOLA
Ben R. Homola 3950
SIGNATURE PSM NO.
AIM ENGINEERING & SURVEYING, INC. 3114
FIRM OR AGENCY LB NO.
5300 LEE BOULEVARD
LEHIGH ACRES ADDRESS FL 33971
CITY STATE ZIP
(239)332-4569 08/05/2008
PHONE NUMBER DATE

SEND ORIGINAL TO:
Department of Environmental Protection
Bureau of Surveying and Mapping
3900 Commonwealth Boulevard
Mail Station 105
Tallahassee, Florida 32399

D.E.P. USE ONLY	
Processed:	_____
B.L.M. - I.D.	_____
QUAD - I.D.	_____

EMBOSSSED SEAL OVER SIGNATURE