

FLORIDA DEPARTMENT OF ENVIRONMENTAL PROTECTION CERTIFIED CORNER RECORD

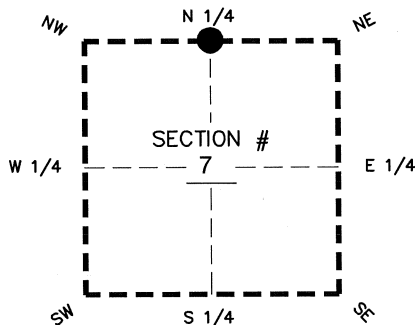
DOC. # _____

BLM. # T43SR26E140600

CORNER DESCRIPTION: MONUMENTATION DESCRIPTION (EVIDENCE FOUND OR METHOD TO SET)

Depict corner with 

FOUND 4"x4" CONCRETE MONUMENT WITH PIN IN TOP



PRIOR CCR'S:

DOC. # 089409

HORIZONTAL POSITION INFORMATION (if determined):

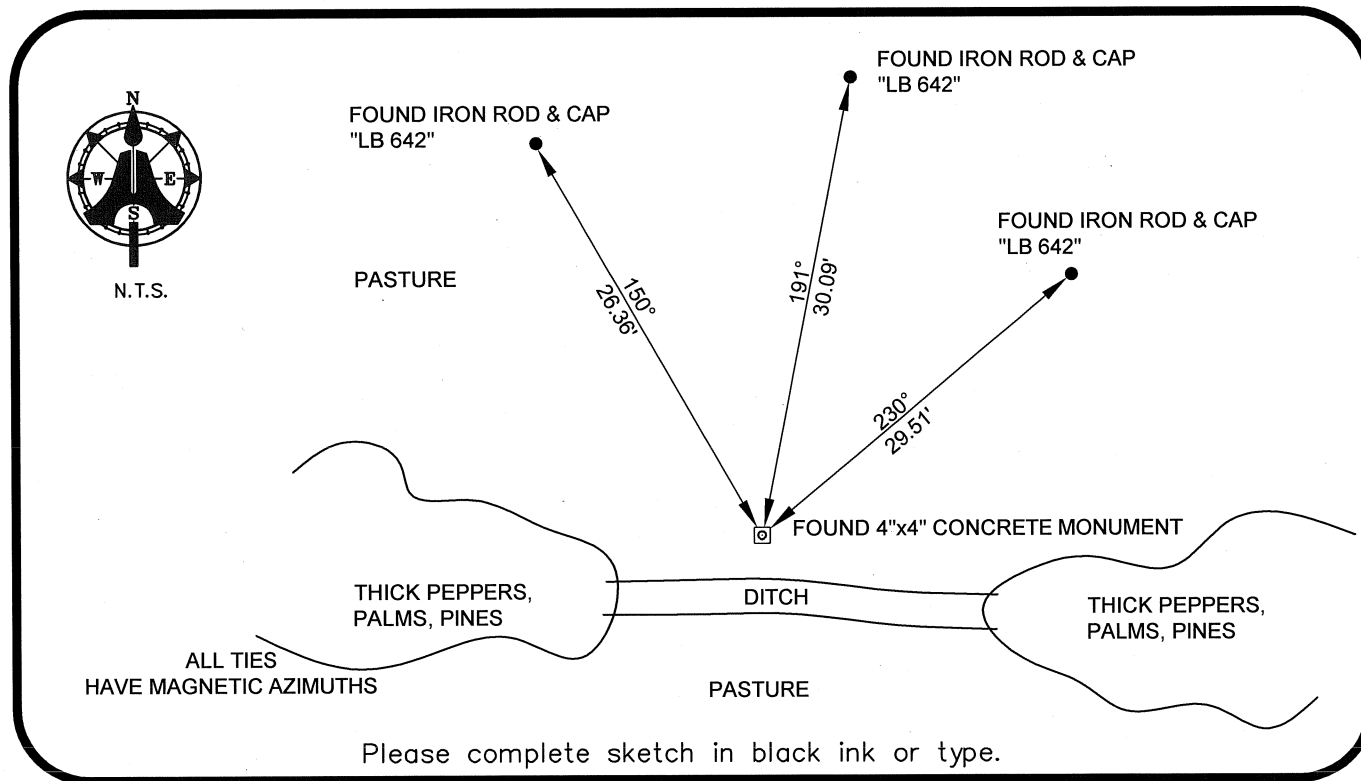
Latitude 26°45'17.4029" N Longitude 81°45'10.7265" W
 Y(NORTHING-Ft.) 880131.85 X(EASTING-Ft.) 736775.20 Zone WEST
 Convergence 00°06'40.3" Scale factor 0.99994863

Coordinate determination: GPS

Horizontal datum: NAD83(NSRS2007)

Accuracy (circle one): 1st 2nd 3rd other 1:35,000

N1/4 corner of Section 7
 Twp 43 S, Rge 26 E
 Tallahassee Base Meridian,
LEE County(s), Florida



SURVEYORS CERTIFICATE:

I certify the monument and accessories indicated above were field located on 04/22/08

BEN R. HOMOLA

Ben R. Homola 3950
 SIGNATURE PSM NO.

AIM ENGINEERING & SURVEYING, INC. 3114
 FIRM OR AGENCY LB NO.

5300 LEE BOULEVARD
 ADDRESS FL 33970

CITY STATE ZIP
 (239)332-4569 07/30/2008
 PHONE NUMBER DATE

EMBOSSSED SEAL OVER SIGNATURE

SEND ORIGINAL TO:
 Department of Environmental Protection
 Bureau of Surveying and Mapping
 3900 Commonwealth Boulevard
 Mail Station 105
 Tallahassee, Florida 32399

D.E.P. USE ONLY	
Processed:	_____
B.L.M. - I.D.	_____
QUAD - I.D.	_____