

FLORIDA DEPARTMENT OF ENVIRONMENTAL PROTECTION

CERTIFIED CORNER RECORD

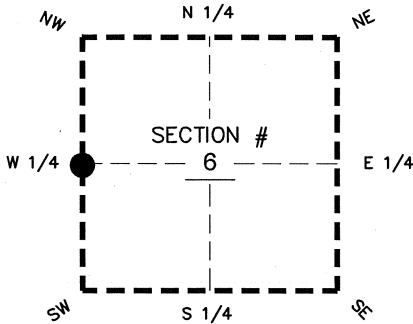
80

DOC. # _____
 BLM. # T43SR26E100640

CORNER DESCRIPTION: **MONUMENTATION DESCRIPTION (EVIDENCE FOUND OR METHOD TO SET)**

Depict corner with

SET PK & DISK AIM ENG LB3114, SINGLE PROPORTIONATE MEASUREMENT BETWEEN NORTH AND SOUTH SECTION CORNERS



PRIOR CCR'S:

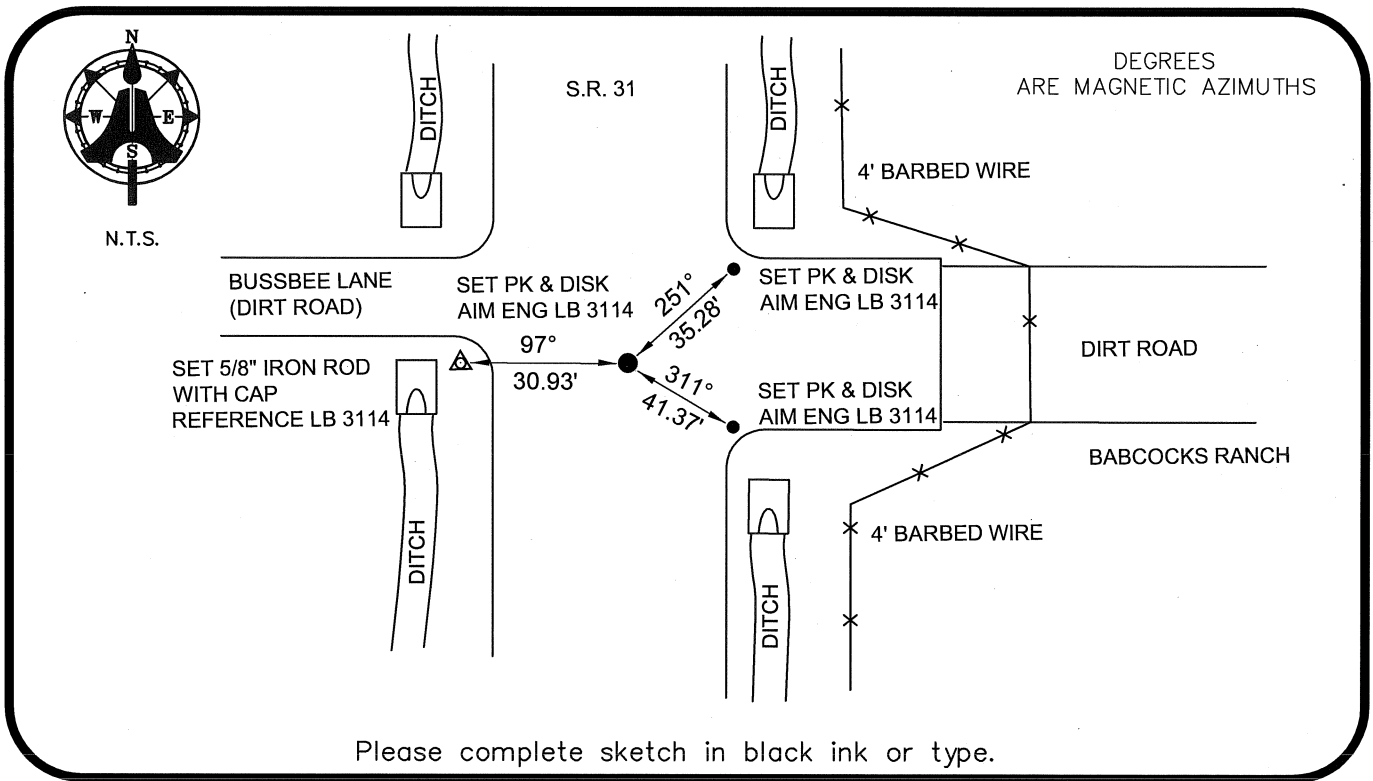
DOC. # N/A

HORIZONTAL POSITION INFORMATION (if determined):

Latitude 26°45'44.2500" N Longitude 81°45'38.9348" W
 Y(NORTHING-Ft.) 882837.75 X(EASTING-Ft.) 734213.14 Zone WEST
 Convergence 00°06'27.7" Scale factor 0.99994816

W 1/4 corner of Section 6
 Twp 43 S, Rge 26 E
 Tallahassee Base Meridian,
LEE County(s), Florida

Coordinate determination: GPS
 Horizontal datum: NAD83(NSRS2007)
 Accuracy (circle one): 1st 2nd 3rd other 1:35,000



Please complete sketch in black ink or type.

SURVEYORS CERTIFICATE:

I certify the monument and accessories indicated above were field located on 08-04-2008

BEN R. HOMOLA

 _____ 3950
SIGNATURE PSM NO.
 AIM ENGINEERING & SURVEYING, INC. 3114
FIRM OR AGENCY LB NO.
 5300 LEE BOULEVARD
 LEHIGH ACRES ADDRESS FL 33971
 CITY STATE ZIP
 (239) 332-4569 08/05/2008
PHONE NUMBER DATE

SEND ORIGINAL TO:
 Department of Environmental Protection
 Bureau of Surveying and Mapping
 3900 Commonwealth Boulevard
 Mail Station 105
 Tallahassee, Florida 32399

D.E.P. USE ONLY
Processed: _____
B.L.M. - I.D. _____
QUAD - I.D. _____

EMBOSSSED SEAL OVER SIGNATURE