

FLORIDA DEPARTMENT OF ENVIRONMENTAL PROTECTION  
CERTIFIED CORNER RECORD

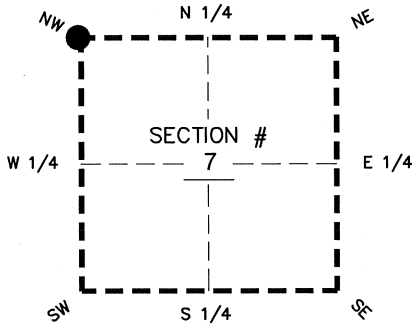
DOC. # \_\_\_\_\_

BLM. # T43SR26E100600

CORNER DESCRIPTION: MONUMENTATION DESCRIPTION (EVIDENCE FOUND OR METHOD TO SET)

Depict corner with ●

FOUND PK AND ALUMINUM DISK-AIM ENG LB 3114



PRIOR CCR'S:

DOC. # 089408

HORIZONTAL POSITION INFORMATION ( if determined ):

Latitude 26°45'17.9394" N Longitude 81°45'39.1513" W

Y(NORTHING-Ft.) 880181.10 X(EASTING-Ft.) 734198.52 Zone WEST

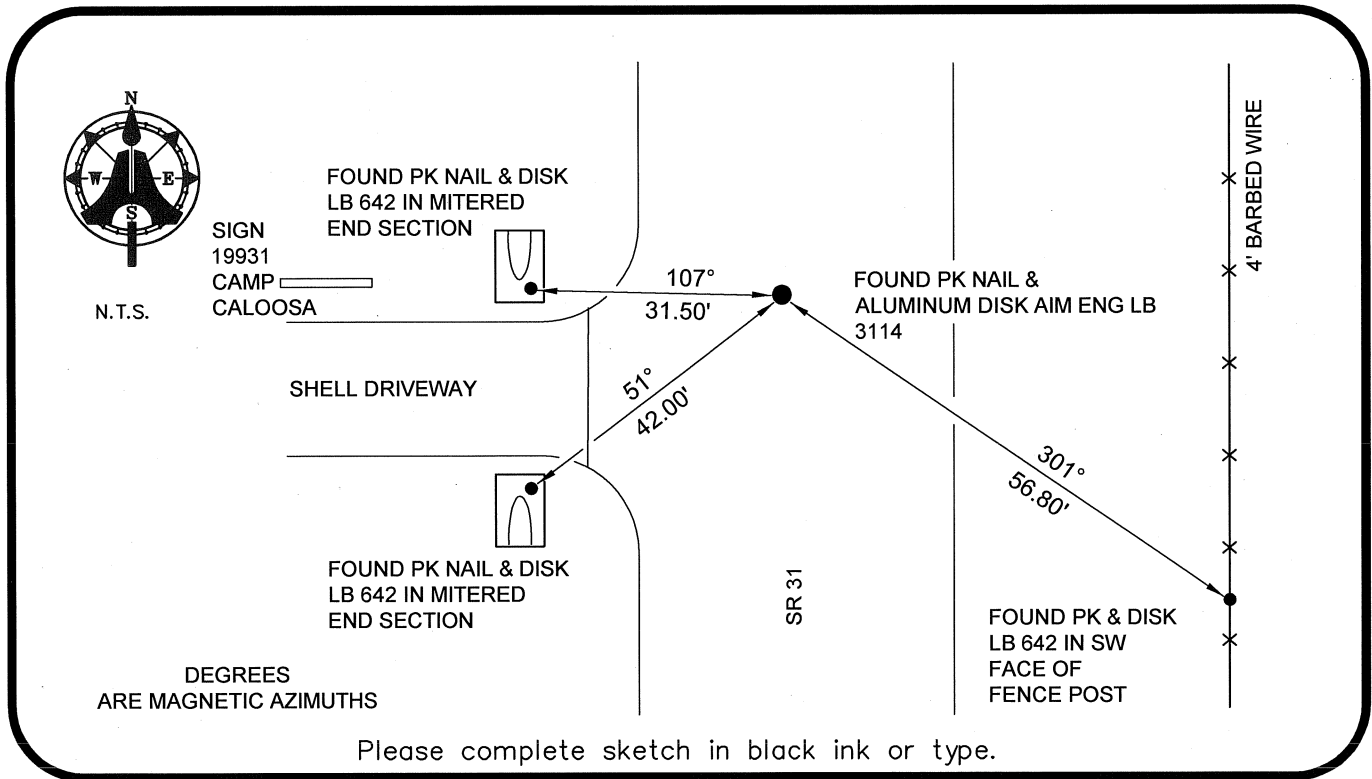
Convergence 00°06'27.5" Scale factor 0.99994816

Coordinate determination: GPS

Horizontal datum: NAD83(NSRS2007)

Accuracy (circle one): 1st 2nd 3rd other 1:35,000

NW corner of Section 7  
Twp 43 S, Rge 26 E  
Tallahassee Base Meridian,  
LEE County(s), Florida



Please complete sketch in black ink or type.

SURVEYORS CERTIFICATE:

I certify the monument and accessories indicated above were field located on 03-13-2008

BEN R. HOMOLA

*Ben R. Homola* 3950  
SIGNATURE

AIM ENGINEERING & SURVEYING, INC. 3114  
FIRM OR AGENCY PSM NO.

5300 LEE BOULEVARD  
LEHIGH ACRES ADDRESS FL 33971  
CITY STATE ZIP

(239)332-4569 07/30/2008  
PHONE NUMBER DATE

EMBOSSSED SEAL OVER SIGNATURE

SEND ORIGINAL TO:  
Department of Environmental Protection  
Bureau of Surveying and Mapping  
3900 Commonwealth Boulevard  
Mail Station 105  
Tallahassee, Florida 32399

D.E.P. USE ONLY  
Processed: \_\_\_\_\_  
B.L.M. - I.D. \_\_\_\_\_  
QUAD - I.D. \_\_\_\_\_