

FLORIDA DEPARTMENT OF ENVIRONMENTAL PROTECTION CERTIFIED CORNER RECORD

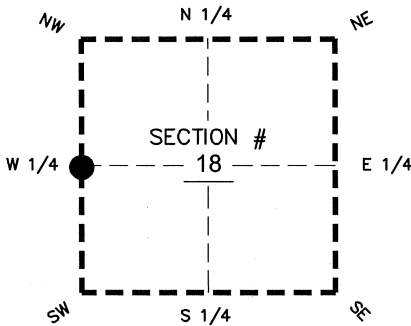
DOC. # _____
BLM. # T43SR26E100440

CORNER DESCRIPTION:

MONUMENTATION DESCRIPTION (EVIDENCE FOUND OR METHOD TO SET)

Depict corner with 

FOUND PK & DISK BWLK LB 4919, FLUSH WITH ASPHALT EDGE OF PAVEMENT OVER A FOUND 5"x5" CONCRETE MONUMENT UNDER PAVEMENT



W 1/4 corner of Section 18
Twp 43 S, Rge 26 E
Tallahassee Base Meridian,
LEE County(s), Florida

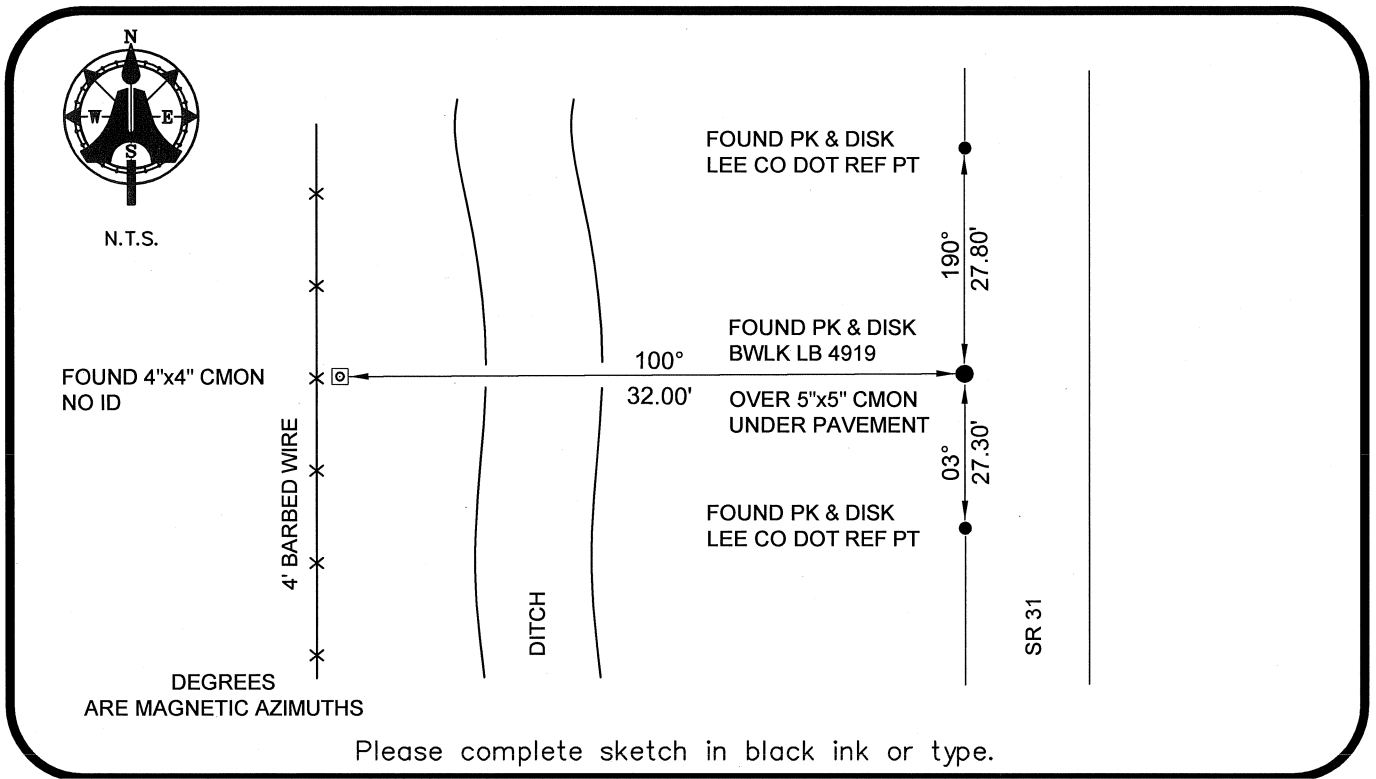
PRIOR CCR'S:

DOC. # 036580

HORIZONTAL POSITION INFORMATION (if determined):

Latitude 26°43'58.7641" N Longitude 81°45'39.7782" W
Y(NORTHING-Ft.) 872186.59 X(EASTING-Ft.) 734156.69 Zone WEST
Convergence 00°06'27.0" Scale factor 0.99994815

Coordinate determination: GPS
Horizontal datum: NAD83(NSRS2007)
Accuracy (circle one): 1st 2nd 3rd other 1:35,000



Please complete sketch in black ink or type.

SURVEYORS CERTIFICATE:

I certify the monument and accessories indicated above were field located on 03-12-2008

BEN R. HOMOLA

Ben R. Homola 3950
SIGNATURE PSM NO.

AIM ENGINEERING & SURVEYING, INC. 3114
FIRM OR AGENCY LB NO.

5300 LEE BOULEVARD
LEHIGH ACRES ADDRESS FL 33971

(239)332-4569 CITY STATE ZIP
PHONE NUMBER DATE

EMBOSSSED SEAL OVER SIGNATURE

SEND ORIGINAL TO:
Department of Environmental Protection
Bureau of Surveying and Mapping
3900 Commonwealth Boulevard
Mail Station 105
Tallahassee, Florida 32399

D.E.P. USE ONLY
Processed: _____
B.L.M. - I.D. _____
QUAD - I.D. _____