

FLORIDA DEPARTMENT OF ENVIRONMENTAL PROTECTION  
CERTIFIED CORNER RECORD

DOC. # \_\_\_\_\_

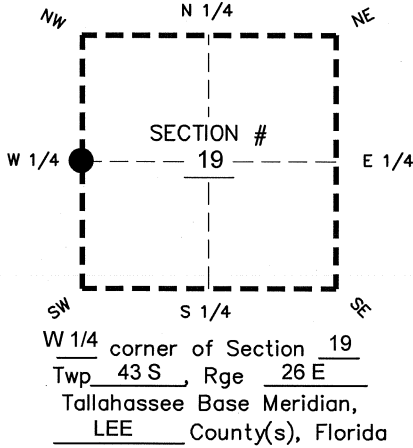
BLM. # T43SR26E100340

CORNER DESCRIPTION:

MONUMENTATION DESCRIPTION (EVIDENCE FOUND OR METHOD TO SET)

Depict corner with ●

FOUND 3.5" X 3.5" CONCRETE MONUMENT WITH ALUMINUM DISK "STARNES & ASSOC. INC. PLS2465" , PROJECTS 1.3' ABOVE GROUND



PRIOR CCR'S:

DOC. # 35204

HORIZONTAL POSITION INFORMATION ( if determined ):

Latitude 26°43'06.0540" N Longitude 81°45'40.1476" W

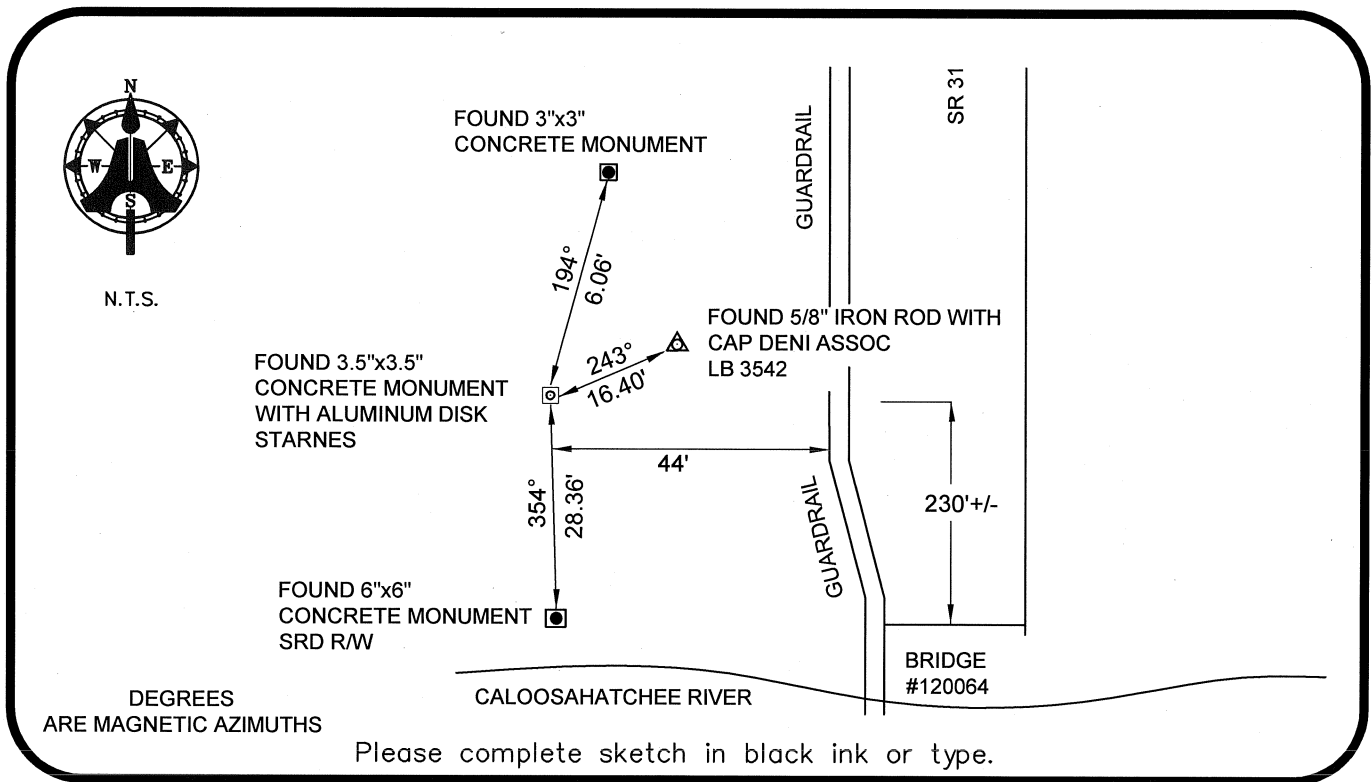
Y(NORTHING-Ft.) 866864.36 X(EASTING-Ft.) 734133.18 Zone WEST

Convergence 00°06'26.6" Scale factor 0.99994815

Coordinate determination: GPS

Horizontal datum: NAD83(NSRS2007)

Accuracy (circle one): 1st 2nd 3rd other 1:35,000



DEGREES ARE MAGNETIC AZIMUTHS

Please complete sketch in black ink or type.

SURVEYORS CERTIFICATE:

I certify the monument and accessories indicated above were field located on 02-26-2008

BEN R. HOMOLA

*Ben R. Homola*

3950

SIGNATURE

PSM NO.

AIM ENGINEERING & SURVEYING, INC.

3114

FIRM OR AGENCY

LB NO.

5300 LEE BOULEVARD

LEHIGH ACRES

ADDRESS

FL

33971

(239)332-4569

PHONE NUMBER

07/30/2008

STATE

ZIP

DATE

EMBOSSSED SEAL OVER SIGNATURE

SEND ORIGINAL TO:  
Department of Environmental Protection  
Bureau of Surveying and Mapping  
3900 Commonwealth Boulevard  
Mail Station 105  
Tallahassee, Florida 32399

D.E.P. USE ONLY	
Processed:	_____
B.L.M. - I.D.	_____
QUAD - I.D.	_____