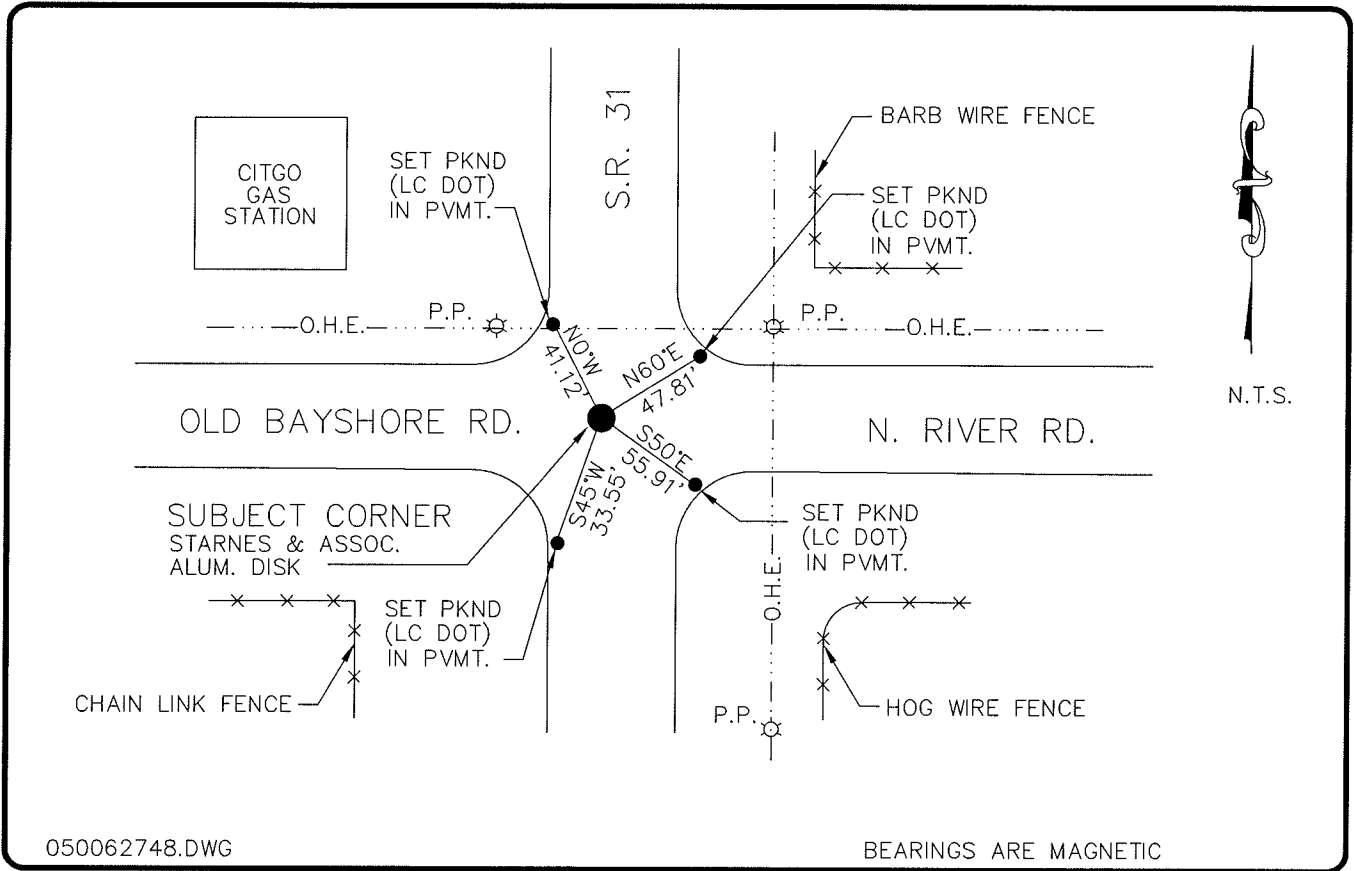


**LAND CORNER RECORD**

**PUBLIC WORKS  
LEE COUNTY, FLORIDA**

Address - 1500 Monroe St., Ft. Myers, Fla. 33901

Phone : (239) 479-8900



050062748.DWG

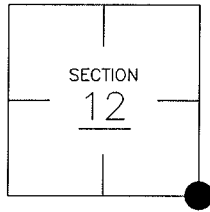
BEARINGS ARE MAGNETIC

**COMMENTS:**

FOUND STARNES ALUMINUM DISK  
CCR #335201, SHOWS #5 REBAR  
0.5' BELOW PAVEMENT. CCR #36584  
SHOWS A BOLT.

**CORNER DESCRIPTION**

SE Corner  
Section 12  
Township 43  
Range 25



**HORIZONTAL POSITION INFORMATION**

Florida West Zone, NAD 1983(1990 Adjustment)  
Northing(ft) 874839.84 Easting(ft) 734167.41  
Latitude 26°44'25.04119" Longitude 81°45'39.60451"  
Scale Factor 0.99994815

**EXISTING CERTIFIED CORNER RECORDS**

Document No.	Date
<u>35201</u>	<u>3-16-90</u>
<u>36584</u>	<u>4-3-85</u>

The above documents are based on FDEP Bureau of Surveying and Mapping Record Information.

I hereby certify the monument and accessories shown above were field located on 7-7-04.

*Arthur W. Parsons*  
**Arthur W. Parsons, County Surveyor**  
Professional Surveyor and Mapper  
Florida Certificate No. 2987  
Date Signed 1-17-06

Lee County Department of Transportation  
1500 Monroe Street  
Fort Myers, Florida 33901  
Phone: (239) 479-8900

POINT NO. 93

BLM REFERENCE NO. T43SR25E700500