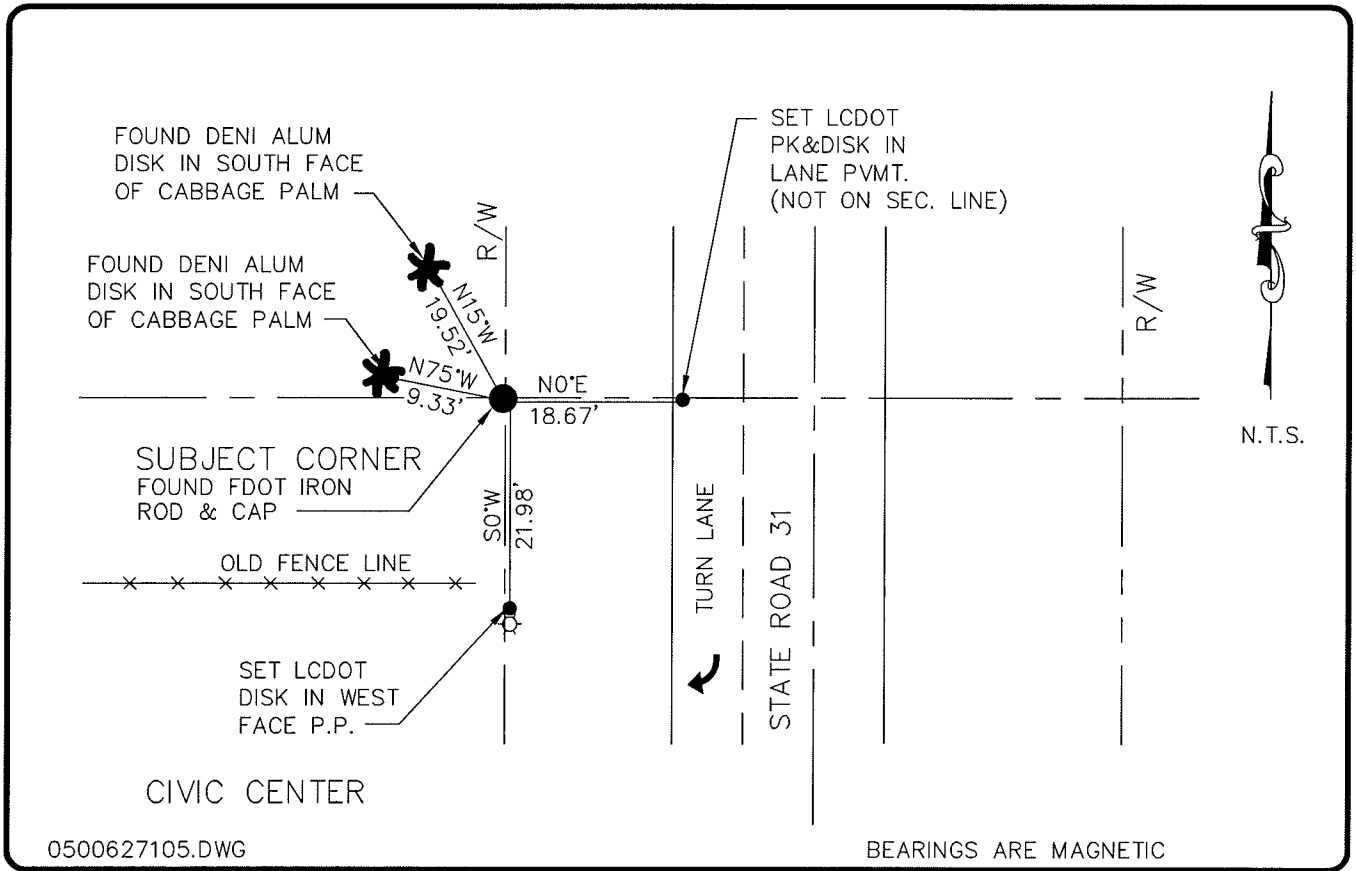


LAND CORNER RECORD

**PUBLIC WORKS
LEE COUNTY, FLORIDA**

Address - 1500 Monroe St., Ft. Myers, Fla. 33901

Phone : (239) 479-8900



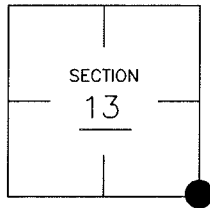
0500627105.DWG

BEARINGS ARE MAGNETIC

COMMENTS:

CORNER DESCRIPTION

SE Corner
Section 13
Township 43
Range 25



FOUND FDOT IRON ROD AND DISK AT SECTION CORNER. REFERENCE TIES VERIFIED LOCATION BY DENI WHO HAD FOUND CONC. MON. AND SET REFERENCE POINTS.

HORIZONTAL POSITION INFORMATION

Florida West Zone, NAD 1983(1990 Adjustment)
Northing(ft) 869533.31 Easting(ft) 734146.15
Latitude 26°43'32.486659" Longitude 81°45'39.949360"
Scale Factor 0.99994814

EXISTING CERTIFIED CORNER RECORDS

Document No.	Date
<u>35203</u>	<u>3-16-90</u>
<u>36607</u>	<u>4-3-85</u>
_____	_____
_____	_____
_____	_____

The above documents are based on FDEP Bureau of Surveying and Mapping Record Information.

I hereby certify the monument and accessories shown above were field located on 12-14-05.

Arthur W. Parsons, County Surveyor
Professional Surveyor and Mapper
Florida Certificate No. 2987
Date Signed 12-19-05

Lee County Department of Transportation
1500 Monroe Street
Fort Myers, Florida 33901
Phone: (239) 479-8900

POINT NO. 49

BLM REFERENCE NO. T43SR25E700400