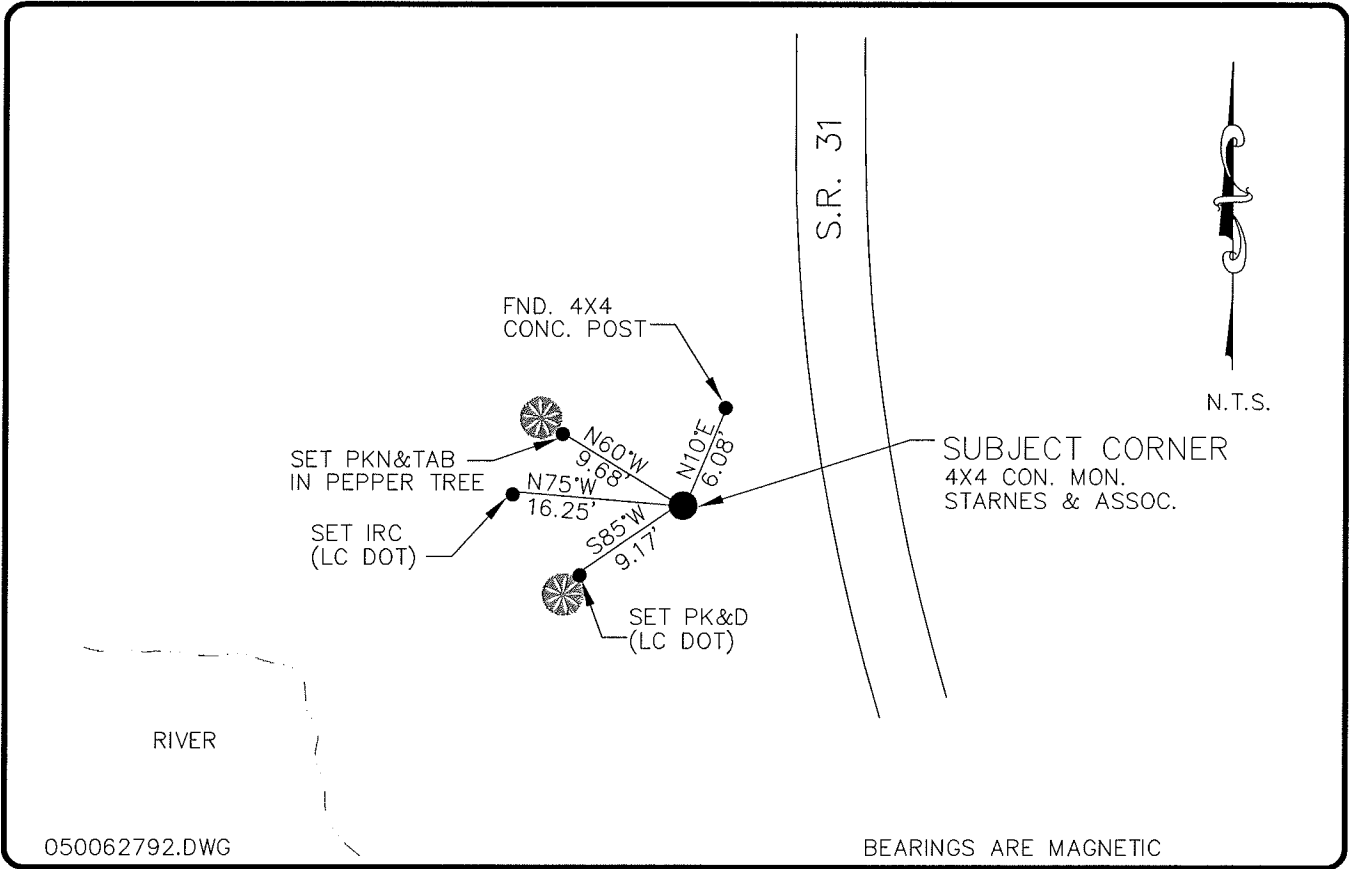


LAND CORNER RECORD

**PUBLIC WORKS
LEE COUNTY, FLORIDA**

Address - 1500 Monroe St., Ft. Myers, Fla. 33901

Phone : (239) 479-8900

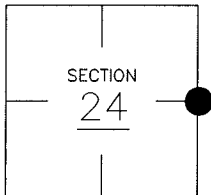


COMMENTS:

FOUND STARNES & ASSOCIATES CONC. POST AT THE EAST 1/4 CORNER OF SECTION 24 AND ACCEPTED AS PROPER LOCATION

CORNER DESCRIPTION

E 1/4 Corner
Section 24
Township 43
Range 25



HORIZONTAL POSITION INFORMATION

Florida West Zone, NAD 1983(1990 Adjustment)
Northing(ft) 866864.33 Easting(ft) 734166.11
Latitude 26°43'06.053682" Longitude 81°45'40.148569"
Scale Factor 0.99994815

EXISTING CERTIFIED CORNER RECORDS

Document No.	Date
35204	

The above documents are based on FDEP Bureau of Surveying and Mapping Record Information.

I hereby certify the monument and accessories shown above were field located on 3-28-05

(Signature)
Arthur W. Parsons, County Surveyor
Professional Surveyor and Mapper
Florida Certificate No. 2987
Date Signed 12-19-05

Lee County Department of Transportation
1500 Monroe Street
Fort Myers, Florida 33901
Phone: (239) 479-8900

POINT NO. 226

BLM REFERENCE NO. T43SR25E700340