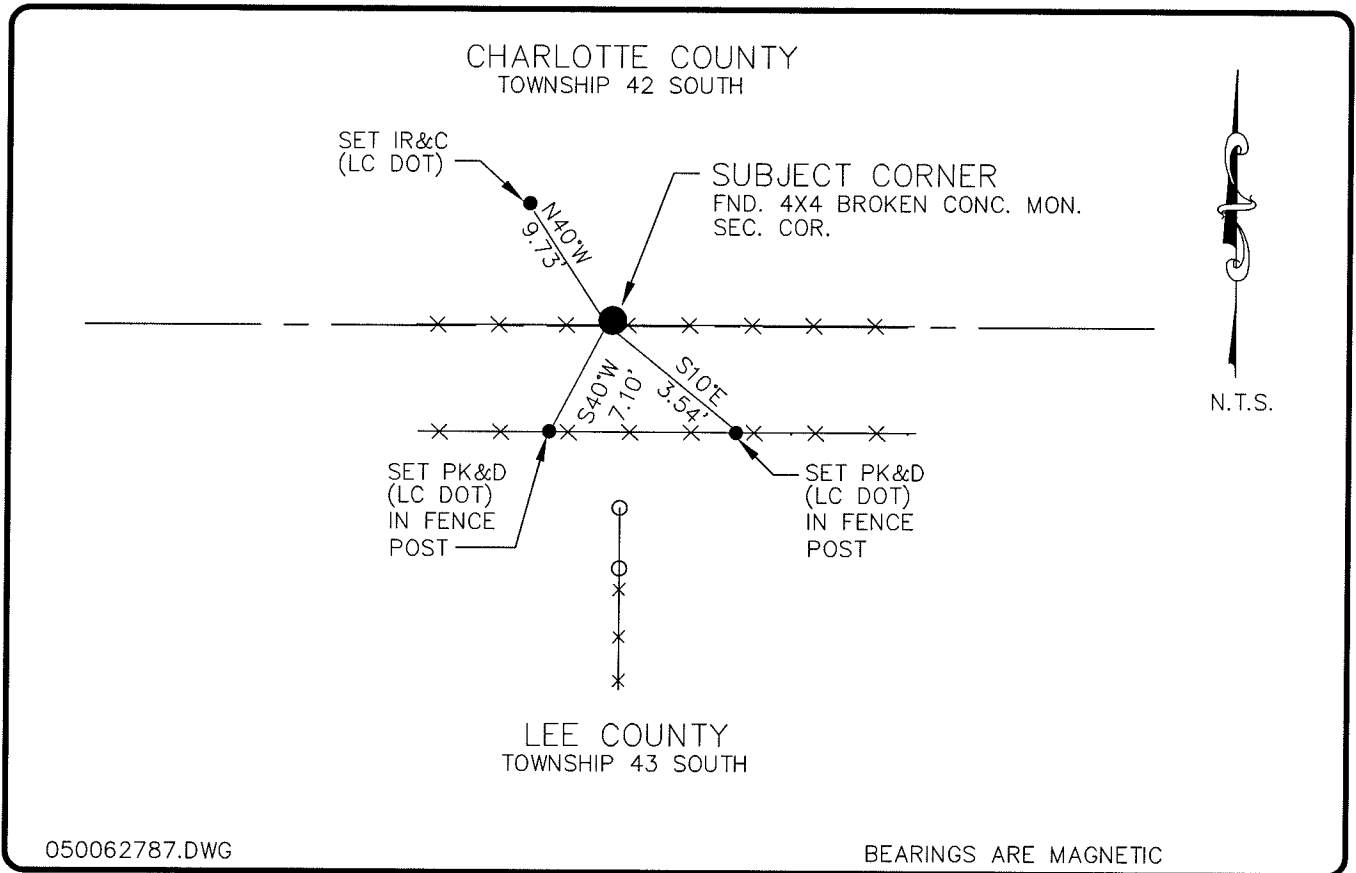


**LAND CORNER RECORD**

**PUBLIC WORKS  
LEE COUNTY, FLORIDA**

Address - 1500 Monroe St., Ft. Myers, Fla. 33901

Phone : (239) 479-8900



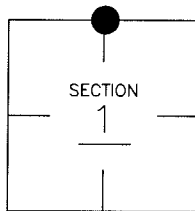
050062787.DWG

BEARINGS ARE MAGNETIC

**COMMENTS:**

**CORNER DESCRIPTION**

N 1/4 Corner  
Section 1  
Township 43  
Range 25



STARNES FOUND 4"X4" CONC. MON. IN 1984, ACCEPTED AS 1/4 CORNER AND SET REFERENCE POINTS.

**HORIZONTAL POSITION INFORMATION**

Florida West Zone, NAD 1983(1990 Adjustment)

Northing(ft) 885498.67 Easting(ft) 731568.85

Latitude 26°46'10.651629" Longitude 81°46'08.055019"

Scale Factor 0.99994769

**EXISTING CERTIFIED CORNER RECORDS**

Document No.	Date
<u>36750</u>	<u>8-7-84</u>
<u>84860</u>	<u>6-2-05</u>

The above documents are based on FDEP Bureau of Surveying and Mapping Record Information.

I hereby certify the monument and accessories shown above were field located on 3-21-05.

**Arthur W. Parsons, County Surveyor**  
Professional Surveyor and Mapper  
Florida Certificate No. 2987  
Date Signed 12-19-05

Lee County Department of Transportation  
1500 Monroe Street  
Fort Myers, Florida 33901  
Phone: (239) 479-8900

POINT NO. 214

BLM REFERENCE NO. T43SR25E640700