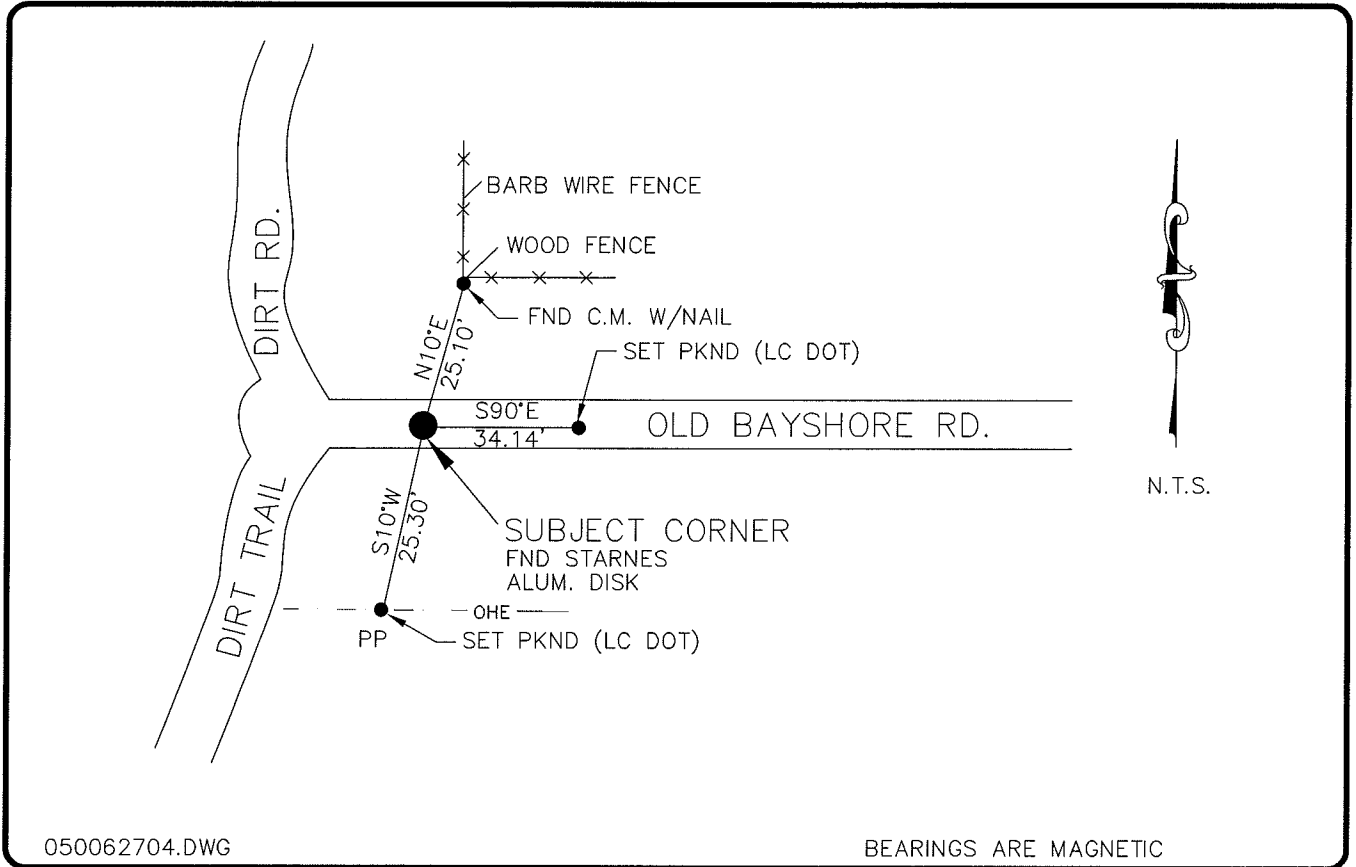


LAND CORNER RECORD

**PUBLIC WORKS
LEE COUNTY, FLORIDA**

Address - 1500 Monroe St., Ft. Myers, Fla. 33901

Phone : (239) 479-8900



050062704.DWG

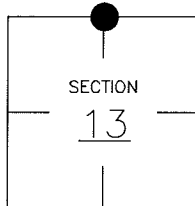
BEARINGS ARE MAGNETIC

COMMENTS:

STARNES FOUND 1-1/2" PIPE IN 1985
 N.E. CORNER IS NOW A STARNES AND
 ASSOCIATES ALUMINUM DISK. ORIGINAL
 NOTES BY R. CANOVA (1860-1861)

CORNER DESCRIPTION

N 1/4 Corner
 Section 13
 Township 43
 Range 25



HORIZONTAL POSITION INFORMATION

Florida West Zone, NAD 1983(1990 Adjustment)
 Northing(ft) 874862.36 Easting(ft) 731523.29
 Latitude 26°44'25.31256" Longitude 81°46'08.77065"
 Scale Factor 0.99994768

EXISTING CERTIFIED CORNER RECORDS

Document No.	Date
<u>36575</u>	<u>4-3-85</u>

The above documents are based on FDEP Bureau of Surveying and Mapping Record Information.

I hereby certify the monument and accessories shown above were field located on 11-1-04.

Arthur W. Parsons, County Surveyor
 Professional Surveyor and Mapper
 Florida Certificate No. 2987
 Date Signed 12-19-05

Lee County Department of Transportation
 1500 Monroe Street
 Fort Myers, Florida 33901
 Phone: (239) 479-8900

POINT NO. 130

BLM REFERENCE NO. T43SR25E640500