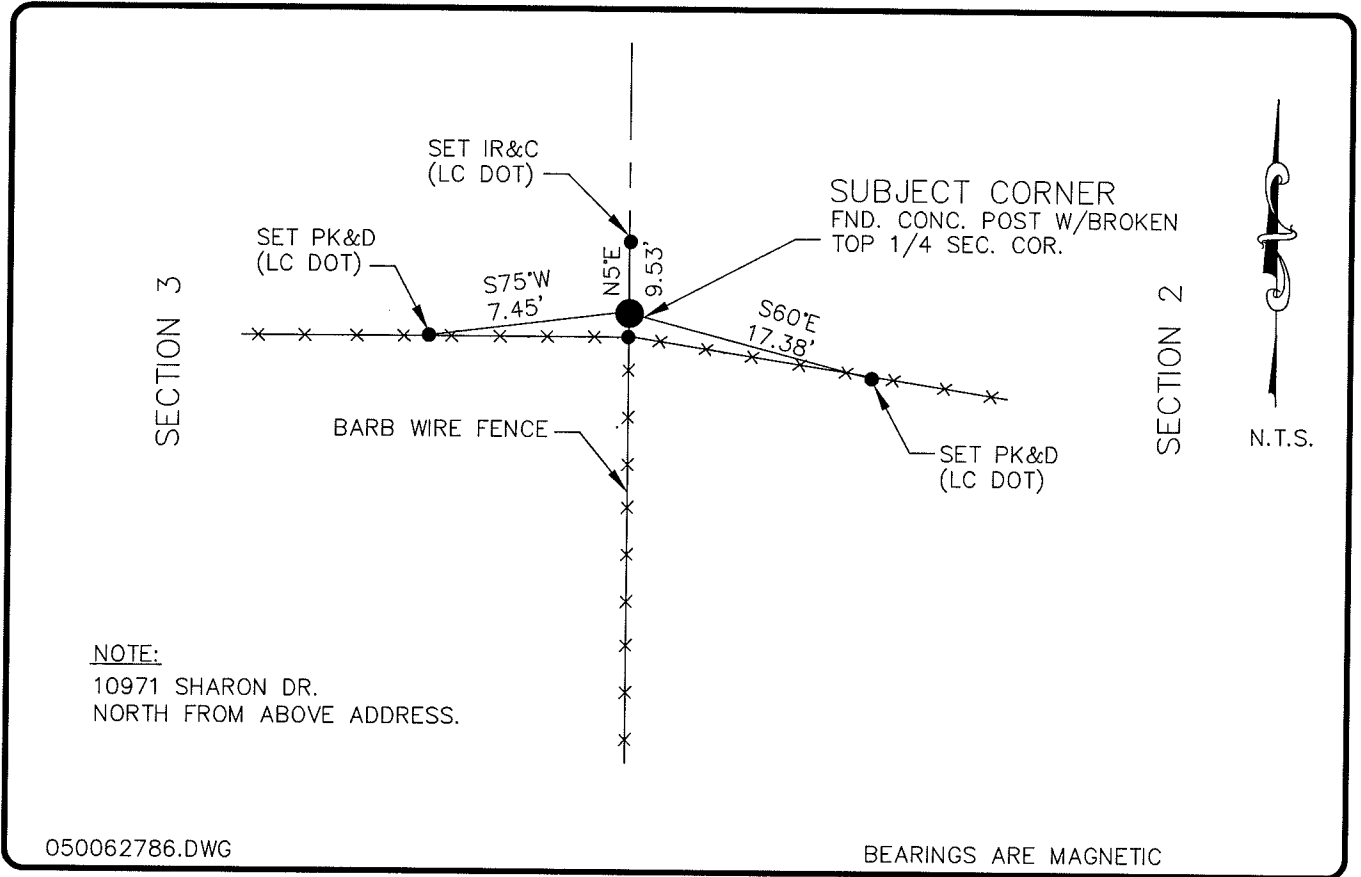


LAND CORNER RECORD

PUBLIC WORKS  
LEE COUNTY, FLORIDA

Address - 1500 Monroe St., Ft. Myers, Fla. 33901

Phone : (239) 479-8900

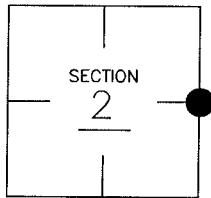


COMMENTS:

FOUND CONC. POST 9.0'± NORTH OF FENCE CORNER. STARNES SECTION MAP SHOWS SET CONC. POST AND SECTION LINE CONFORMS TO FOUND CONC. POST.

CORNER DESCRIPTION

E 1/4 Corner  
Section 2  
Township 43  
Range 25



HORIZONTAL POSITION INFORMATION

Florida West Zone, NAD 1983(1990 Adjustment)

Northing(ft) 882847.71 Easting(ft) 728897.31

Latitude 26°45'44.444165" Longitude 81°46'37.582581"

Scale Factor 0.99994724

EXISTING CERTIFIED CORNER RECORDS

Document No.	Date
NONE FOUND	

The above documents are based on FDEP Bureau of Surveying and Mapping Record Information.

I hereby certify the monument and accessories shown above were field located on 1-10-05.

**Arthur W. Parsons, County Surveyor**  
Professional Surveyor and Mapper  
Florida Certificate No. 2987  
Date Signed 12-19-05

Lee County Department of Transportation  
1500 Monroe Street  
Fort Myers, Florida 33901  
Phone: (239) 479-8900

POINT NO. 212

BLM REFERENCE NO. T43SR25E600640