

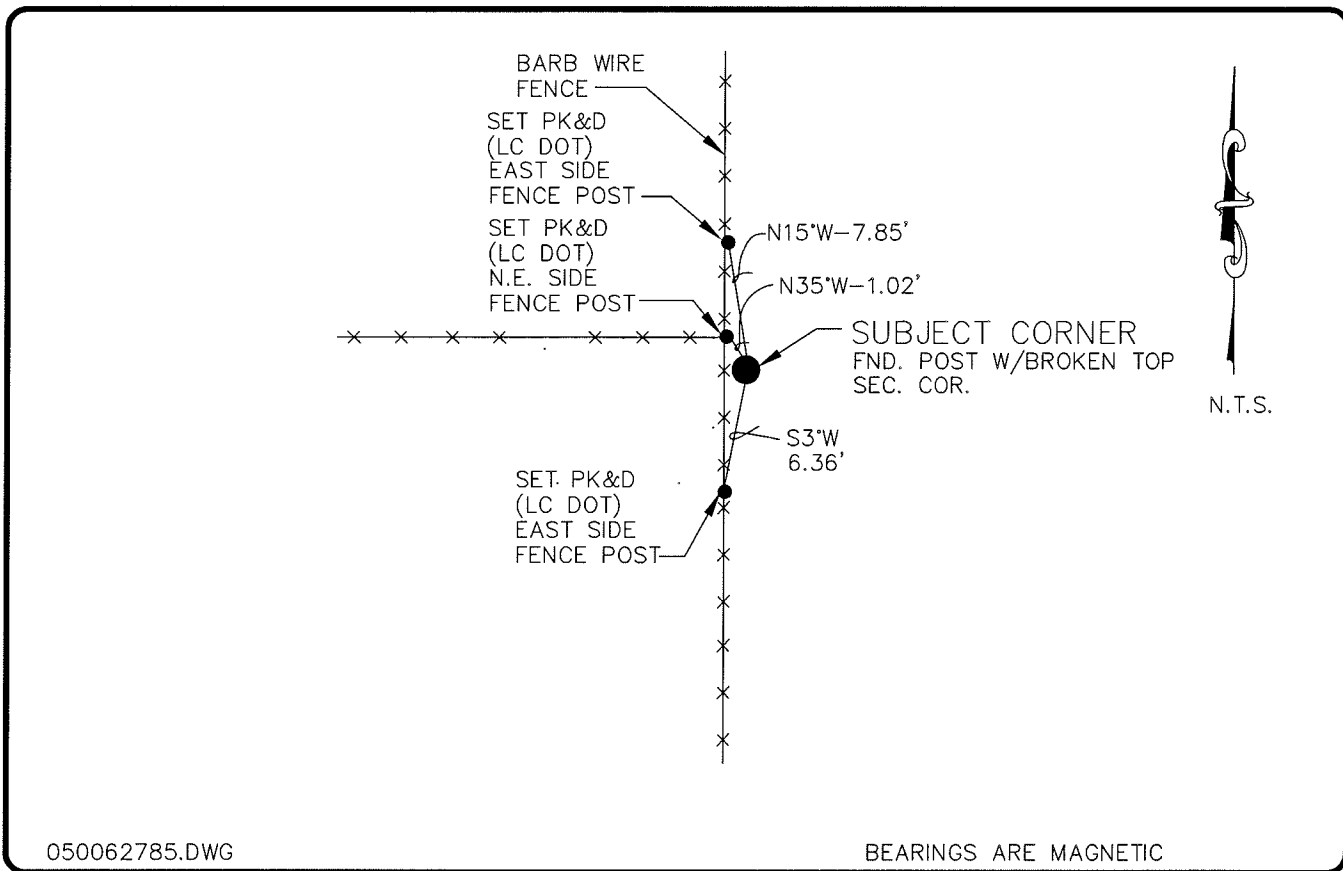
LAND CORNER RECORD

PUBLIC WORKS

LEE COUNTY, FLORIDA

Address - 1500 Monroe St., Ft. Myers, Fla. 33901

Phone : (239) 479-8900

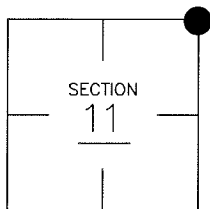


COMMENTS:

DOCUMENT # 13823 INDICATES LITERWOOD POST FOUND, HAS BEEN REPLACED WITH CONC. POST

CORNER DESCRIPTION

NE Corner
 Section 11
 Township 43
 Range 25



HORIZONTAL POSITION INFORMATION

Florida West Zone, NAD 1983(1990 Adjustment)
 Northing(ft) 880192.52 Easting(ft) 728891.29
 Latitude 26°45'18.148046" Longitude 81°46'37.700200"
 Scale Factor 0.99994724

EXISTING CERTIFIED CORNER RECORDS

Document No.	Date
<u>13823</u>	<u>11-20-81</u>
_____	_____
_____	_____
_____	_____

The above documents are based on FDEP Bureau of Surveying and Mapping Record Information.

I hereby certify the monument and accessories shown above were field located on 3-15-05.

(Signature)
Arthur W. Parsons, County Surveyor
 Professional Surveyor and Mapper
 Florida Certificate No. 2987
 Date Signed 12-19-05

Lee County Department of Transportation
 1500 Monroe Street
 Fort Myers, Florida 33901
 Phone: (239) 479-8900

POINT NO. 211

BLM REFERENCE NO. T43SR25E 600 600