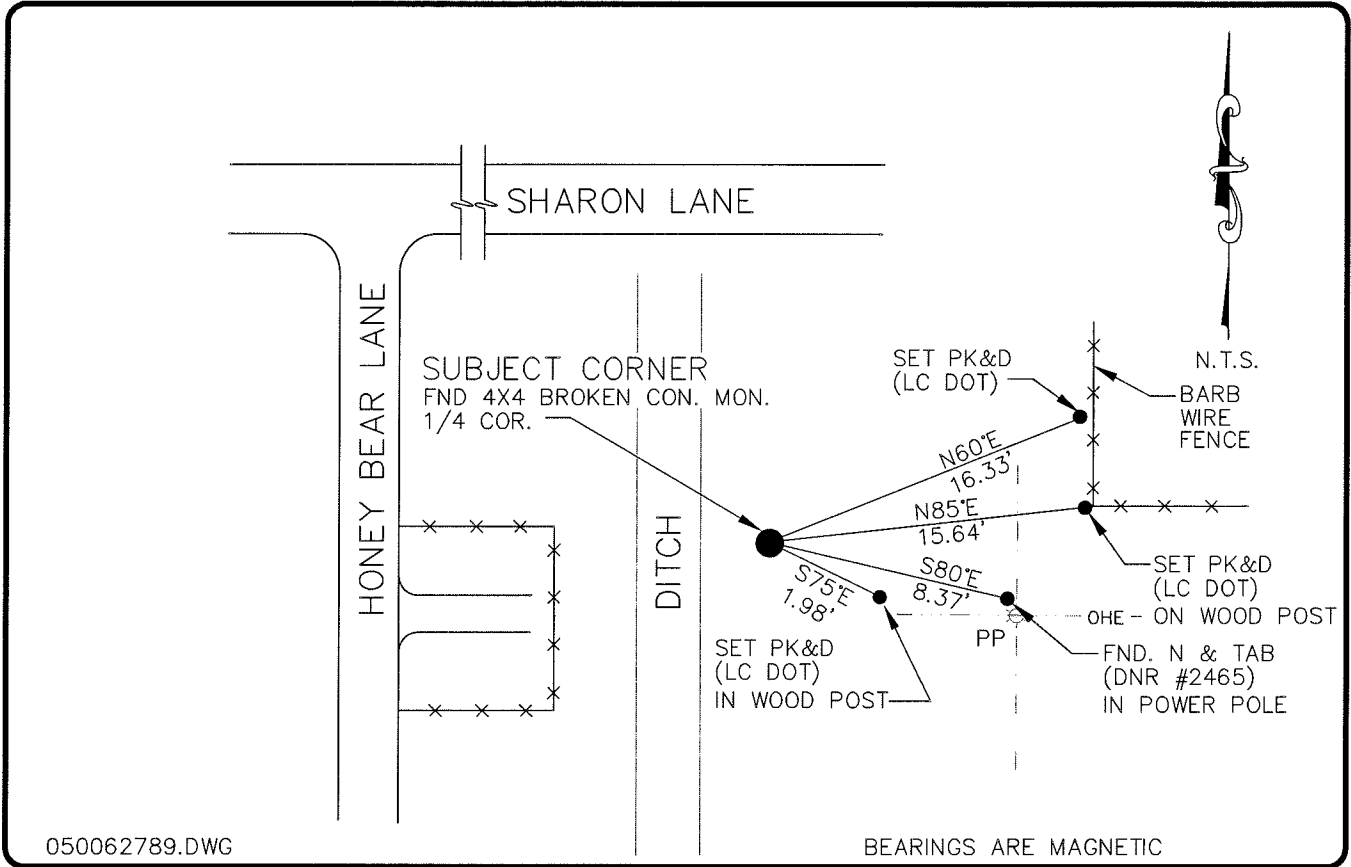


LAND CORNER RECORD

**PUBLIC WORKS
LEE COUNTY, FLORIDA**

Address - 1500 Monroe St., Ft. Myers, Fla. 33901

Phone : (239) 479-8900



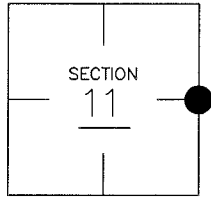
050062789.DWG

BEARINGS ARE MAGNETIC

COMMENTS:

CORNER DESCRIPTION

E 1/4 Corner
Section 11
Township 43
Range 25



FOUND 4"x4" CONC. MONUMENT WHICH CONFORMS TO LOCATION OF MONUMENT RECORDED IN DOCUMENT # 13824

HORIZONTAL POSITION INFORMATION

Florida West Zone, NAD 1983(1990 Adjustment)
 Northing(ft) 817532.24 Easting(ft) 728878.58
 Latitude 26°34'57.565598" Longitude 81°46'39.044807"
 Scale Factor 0.99994723

EXISTING CERTIFIED CORNER RECORDS

Document No.	Date
<u>13824</u>	<u>11-20-81</u>

The above documents are based on FDEP Bureau of Surveying and Mapping Record Information.

I hereby certify the monument and accessories shown above were field located on 3-22-05.

Arthur W. Parsons, County Surveyor
 Professional Surveyor and Mapper
 Florida Certificate No. 2987
 Date Signed 12-19-05

Lee County Department of Transportation
 1500 Monroe Street
 Fort Myers, Florida 33901
 Phone: (239) 479-8900

POINT NO. 222

BLM REFERENCE NO. T43SR25E 600 540