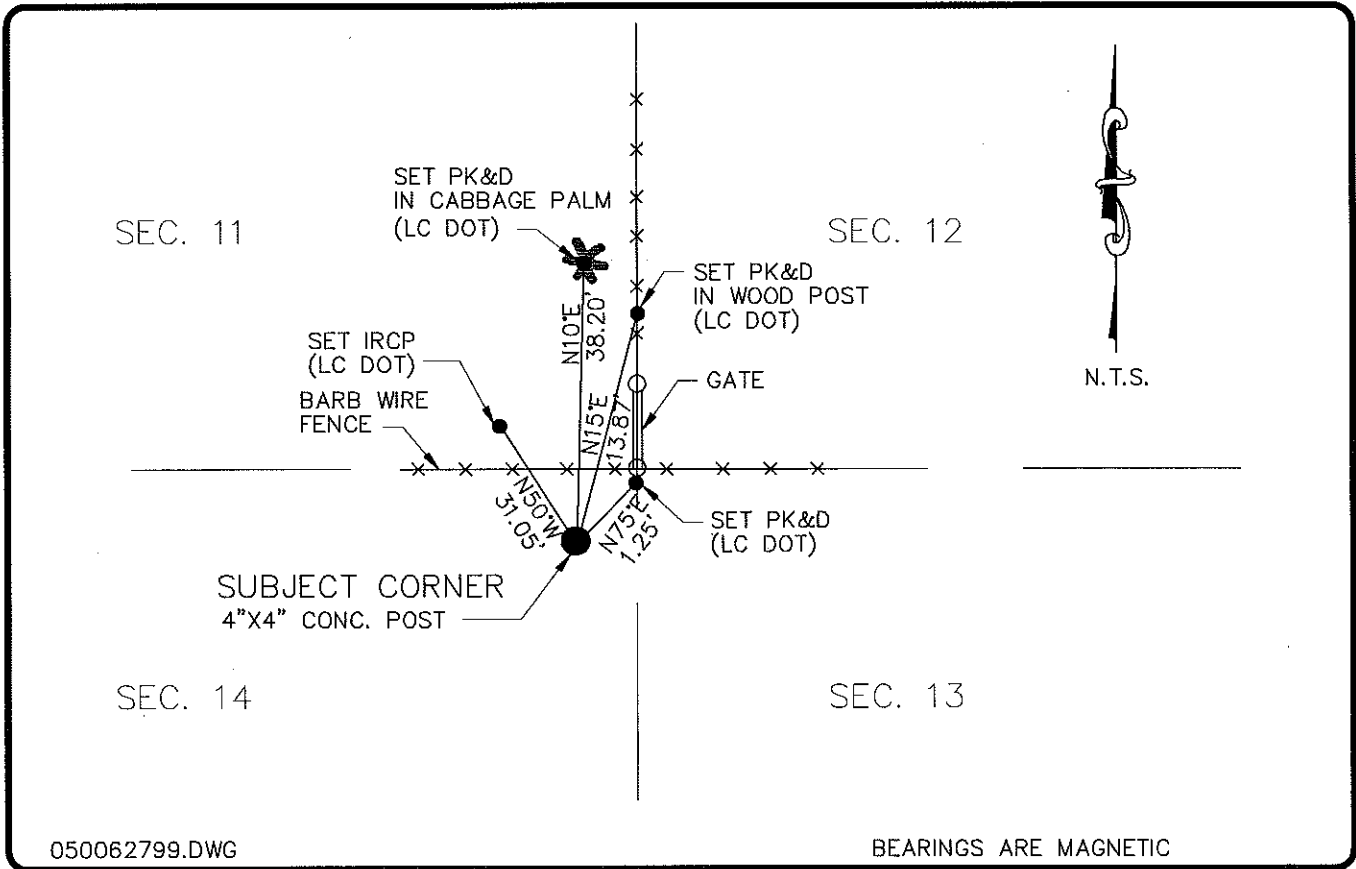


LAND CORNER RECORD

PUBLIC WORKS
LEE COUNTY, FLORIDA

Address - 1500 Monroe St., Ft. Myers, Fla. 33901

Phone : (239) 479-8900



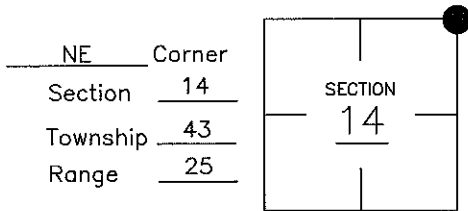
050062799.DWG

BEARINGS ARE MAGNETIC

COMMENTS:

STARNE'S FOUND AND REFERENCED A 4"X4" CONC. POST IN 1981 LOCALLY ACCEPTED AS SECTION CORNER.

CORNER DESCRIPTION



HORIZONTAL POSITION INFORMATION

Florida West Zone, NAD 1983(1990 Adjustment)
 Northing(ft) 874872.12 Easting(ft) 728871.32
 Latitude 26°44'25.456155" Longitude 81°46'38.023171"
 Scale Factor 0.99994723

EXISTING CERTIFIED CORNER RECORDS

Document No.	Date
13826	8-17-81

The above documents are based on FDEP Bureau of Surveying and Mapping Record Information.

I hereby certify the monument and accessories shown above were field located on 7-7-04.

Arthur W. Parsons, County Surveyor
 Professional Surveyor and Mapper
 Florida Certificate No. 2987
 Date Signed _____

Lee County Department of Transportation
 1500 Monroe Street
 Fort Myers, Florida 33901
 Phone: (239) 479-8900

POINT NO. 92

BLM REFERENCE NO. T43SR25E640340 ⁶⁰⁰⁵⁰⁰