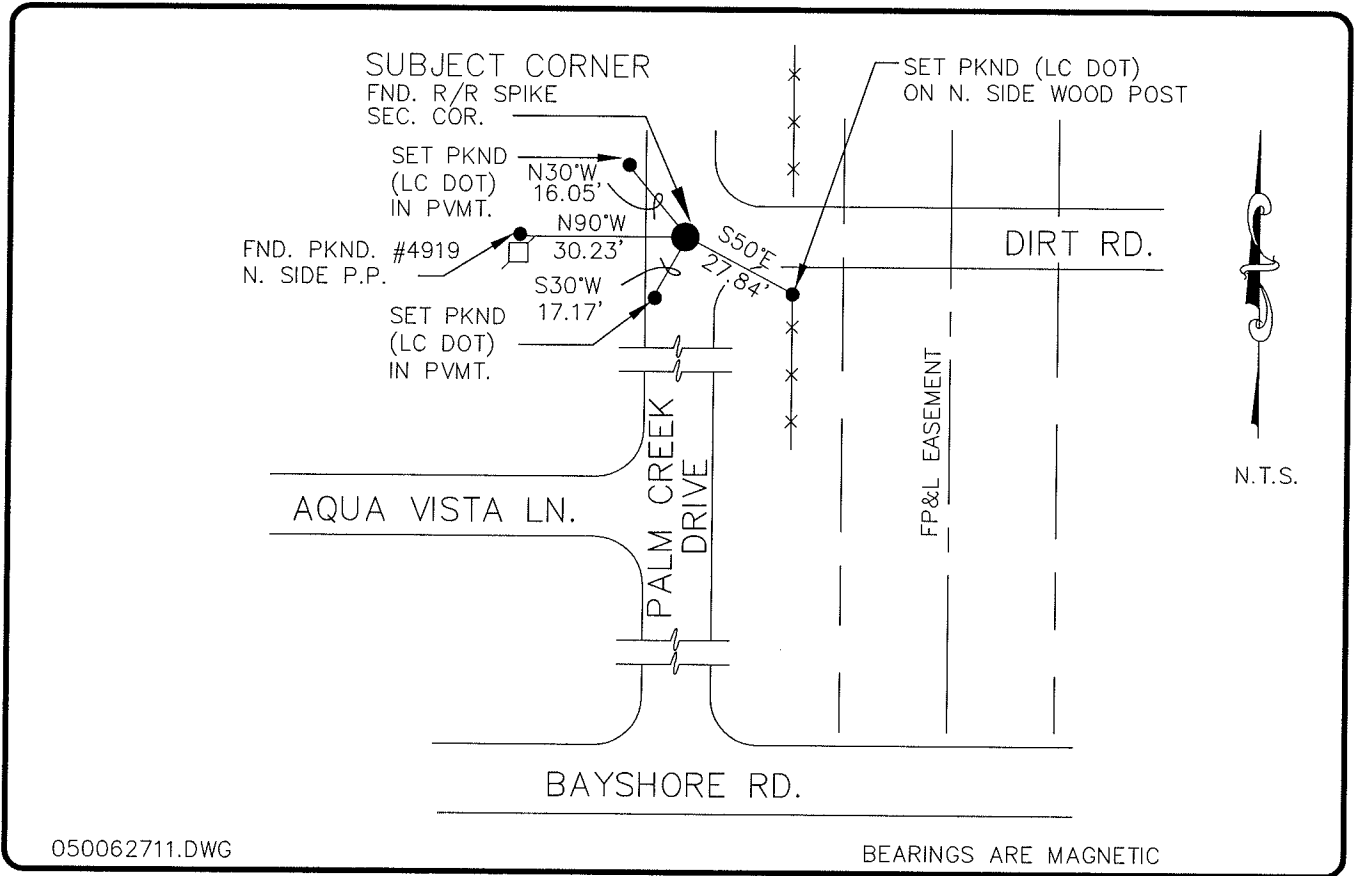


LAND CORNER RECORD

**PUBLIC WORKS
LEE COUNTY, FLORIDA**

Address - 1500 Monroe St., Ft. Myers, Fla. 33901

Phone : (239) 479-8900



050062711.DWG

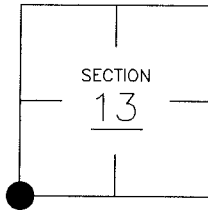
BEARINGS ARE MAGNETIC

COMMENTS:

STARNES FOUND A 20d NAIL IN PVMT. AND ACCEPTED AS SECTION CORNER. BEN HOLOMA RECOVERED CORNER IN 1990 AND DESCRIBED AS RAILROAD SPIKE WHICH IS THE CORNER LOCATED AND ACCEPTED AS SECTION CORNER. ALSO CONFORMS WITH STARNES SECTION DRAWINGS.

CORNER DESCRIPTION

SW Corner
Section 13
Township 43
Range 25



HORIZONTAL POSITION INFORMATION

Florida West Zone, NAD 1983(1990 Adjustment)
Northing(ft) 869548.22 Easting(ft) 728847.06
Latitude 26°43'32.72871" Longitude 81°46'38.39412"
Scale Factor 0.99994723

EXISTING CERTIFIED CORNER RECORDS

Document No.	Date
<u>13828</u>	<u>8-16-81</u>
<u>17906</u>	<u>NO IMAGE</u>
<u>35209</u>	<u>3-19-90</u>

The above documents are based on FDEP Bureau of Surveying and Mapping Record Information.

I hereby certify the monument and accessories shown above were field located on 7-6-04

Arthur W. Parsons, County Surveyor
Professional Surveyor and Mapper
Florida Certificate No. 2987
Date Signed 12-19-05

Lee County Department of Transportation
1500 Monroe Street
Fort Myers, Florida 33901
Phone: (239) 479-8900

POINT NO. 37

BLM REFERENCE NO. T43SR25E600400