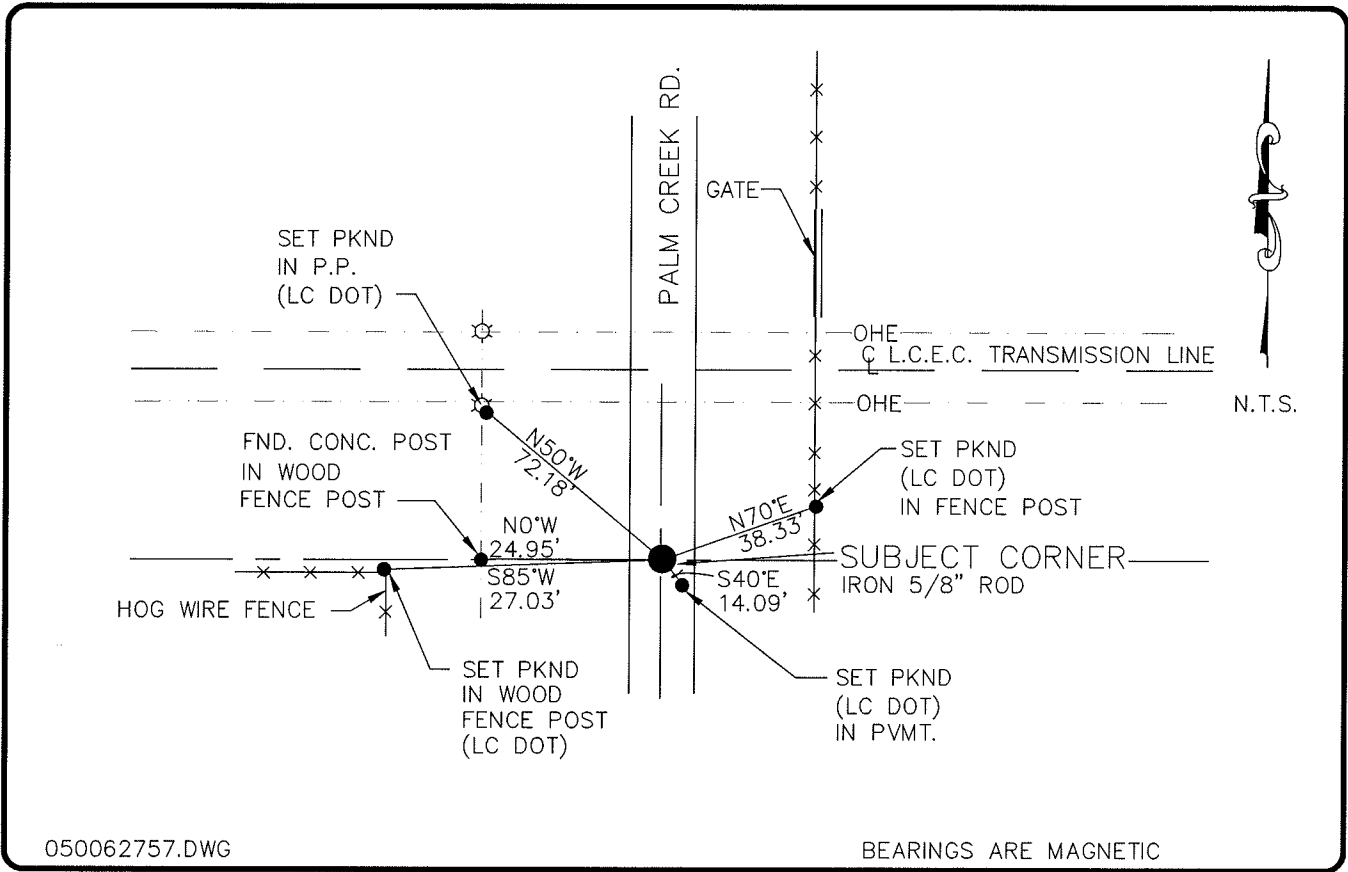


LAND CORNER RECORD

**PUBLIC WORKS
LEE COUNTY, FLORIDA**

Address - 1500 Monroe St., Ft. Myers, Fla. 33901

Phone : (239) 479-8900



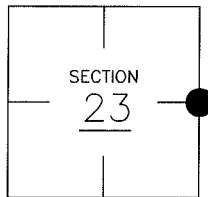
050062757.DWG

BEARINGS ARE MAGNETIC

COMMENTS:

CORNER DESCRIPTION

E 1/4 Corner
Section 23
Township 43
Range 25



STARNES FOUND AND ACCEPTED A BOLT SET IN THE CENTER OF PVMT. OF PALM CREEK DRIVE IN 1981. RESET REFERENCE TIES C.C.R. DEC. # 13835. BEN HOLOMA FOUND A 5/8" REBAR AT THE CORNER AND CONFIRMED STARNES REFERENCE TIES.

HORIZONTAL POSITION INFORMATION

Florida West Zone, NAD 1983(1990 Adjustment)
Northing(ft) 866907.48 Easting(ft) 728836.18
Latitude 26°43'06.57607" Longitude 81°46'38.56426"
Scale Factor 0.99994723

EXISTING CERTIFIED CORNER RECORDS

Document No.	Date
<u>13835</u>	<u>10-5-04</u>
<u>17905</u>	<u>NO IMAGE FOUND</u>
<u>35207</u>	<u>3-19-90</u>

The above documents are based on FDEP Bureau of Surveying and Mapping Record Information.

I hereby certify the monument and accessories shown above were field located on 10-5-04.

Arthur W. Parsons, County Surveyor
Professional Surveyor and Mapper
Florida Certificate No. 2987
Date Signed 12-19-05

Lee County Department of Transportation
1500 Monroe Street
Fort Myers, Florida 33901
Phone: (239) 479-8900

POINT NO. 120

BLM REFERENCE NO. T43SR25E600340