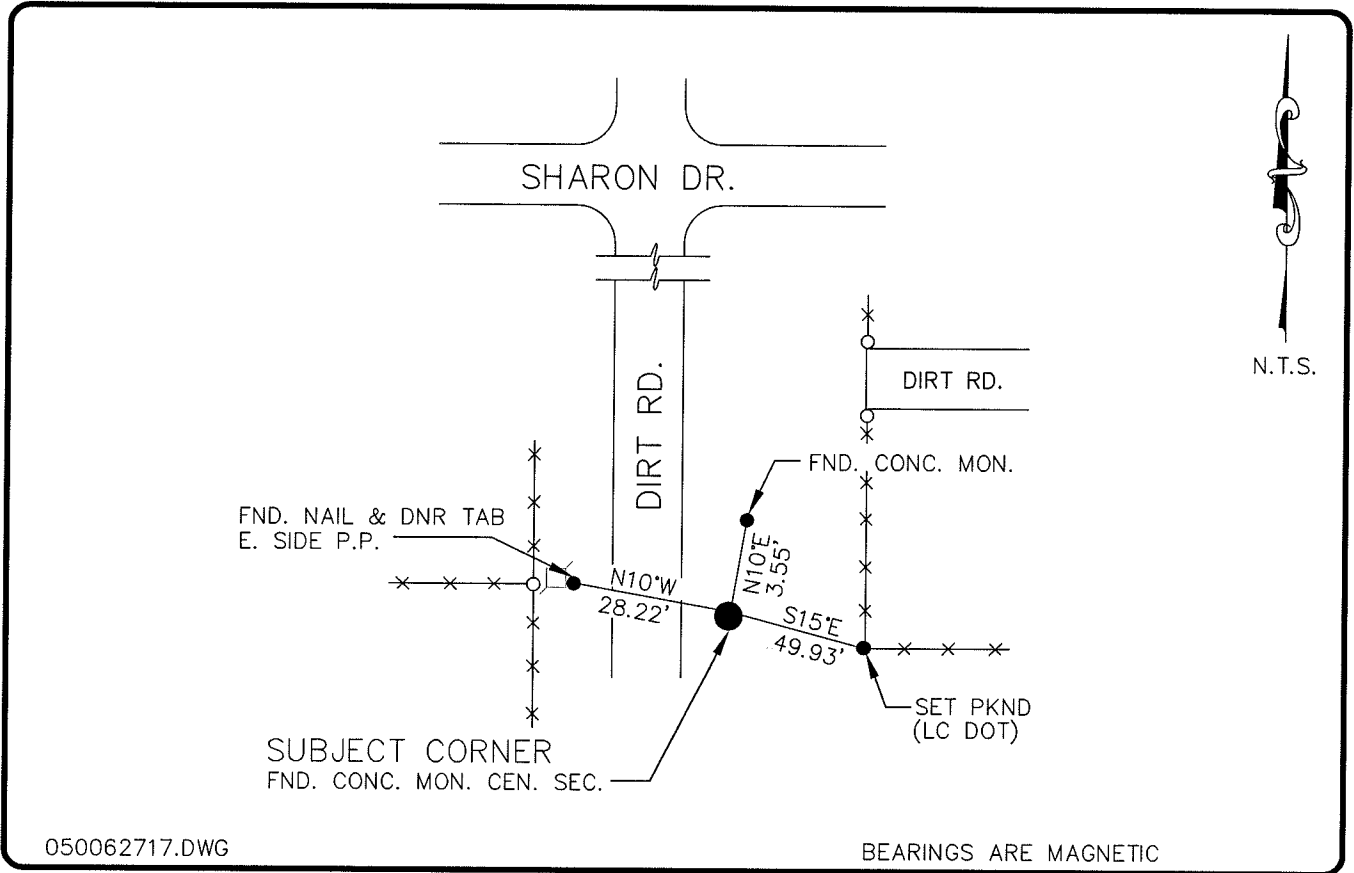


LAND CORNER RECORD

**PUBLIC WORKS
LEE COUNTY, FLORIDA**

Address - 1500 Monroe St., Ft. Myers, Fla. 33901

Phone : (239) 479-8900

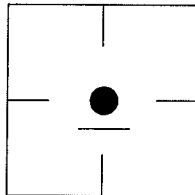


COMMENTS:

DOCUMENT #13810 SHOWS STARNES SET
4"X4" CONC. POST AT CEN. SEC. CONFIRMED
LOCATION BY EXISTING REFERENCE POINTS

CORNER DESCRIPTION

CEN. COR. Corner
Section 11
Township 43
Range 25



HORIZONTAL POSITION INFORMATION

Florida West Zone, NAD 1983(1990 Adjustment)
 Northing(ft) 877559.69 Easting(ft) 726233.92
 Latitude 26°44'52.11811" Longitude 81°47'07.06448"
 Scale Factor 0.99994680

EXISTING CERTIFIED CORNER RECORDS

Document No.	Date
<u>13810</u>	<u>11-20-81</u>

The above documents are based on FDEP Bureau
of Surveying and Mapping Record Information.

I hereby certify the monument and accessories
shown above were field located on 11-16-04.

Arthur W. Parsons, County Surveyor
Professional Surveyor and Mapper
Florida Certificate No. 2987
Date Signed 12-19-05

Lee County Department of Transportation
1500 Monroe Street
Fort Myers, Florida 33901
Phone: (239) 479-8900

POINT NO. 139

BLM REFERENCE NO. T43SR25 540540