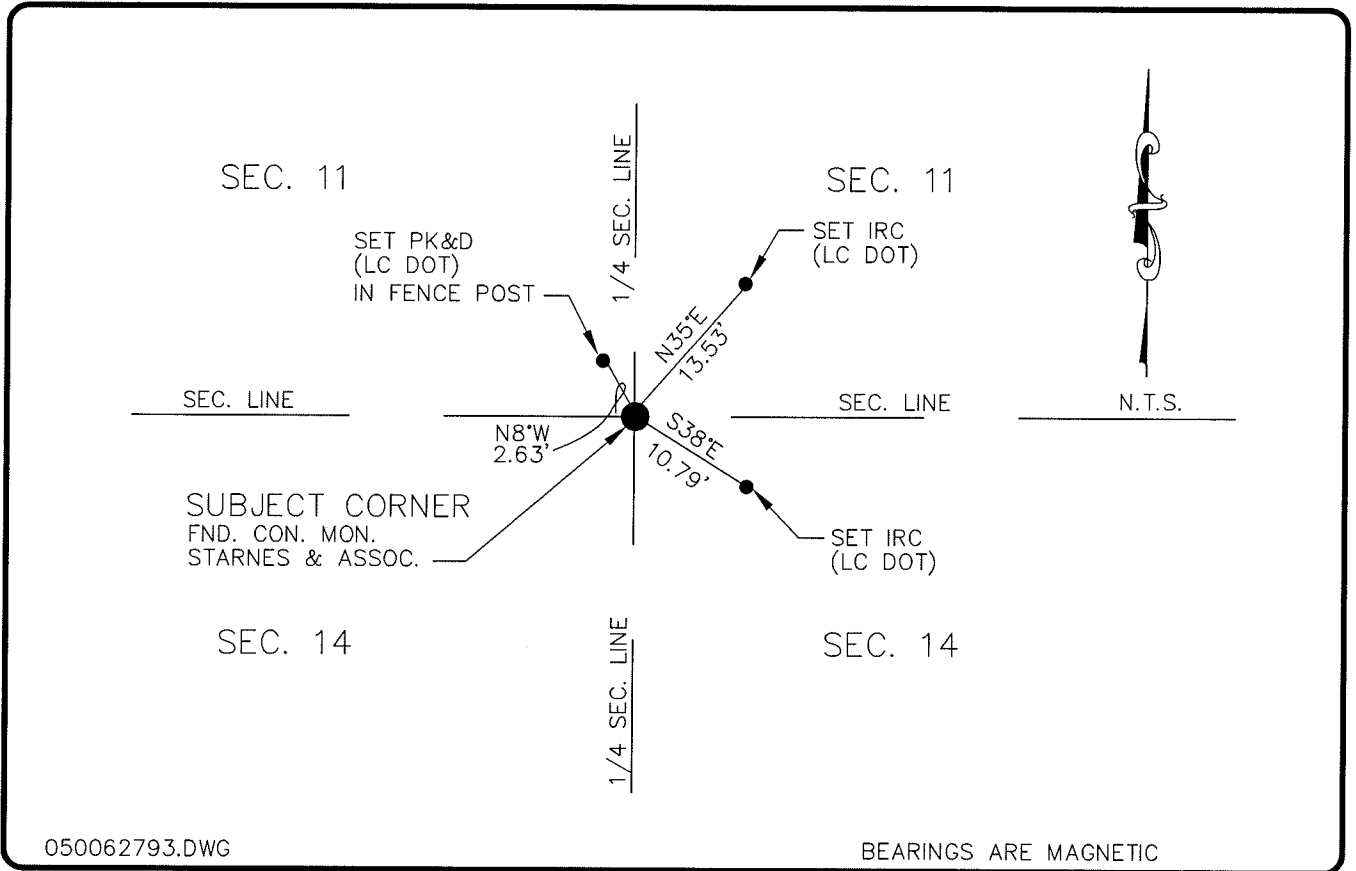


**LAND CORNER RECORD**

**PUBLIC WORKS  
LEE COUNTY, FLORIDA**

Address - 1500 Monroe St., Ft. Myers, Fla. 33901

Phone : (239) 479-8900

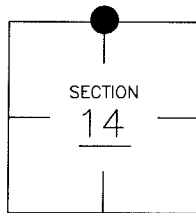


**COMMENTS:**

STARNES FOUND 4"x4" CONC. POST IN 1981 AND SET REFERENCE POINTS, POST HAS BEEN REPLACED WITH A CONC. MON. WITH A STARNES & ASSCS. ALUM DISK

**CORNER DESCRIPTION**

N 1/4 Corner  
Section 14  
Township 43  
Range 25



**HORIZONTAL POSITION INFORMATION**

Florida West Zone, NAD 1983(1990 Adjustment)  
Northing(ft) 874899.25 Easting(ft) 726225.59  
Latitude 26°44'25.769673" Longitude 81°47'07.206479"  
Scale Factor 0.99994680

**EXISTING CERTIFIED CORNER RECORDS**

Document No.	Date
<u>13833</u>	<u>8-17-81</u>

The above documents are based on FDEP Bureau of Surveying and Mapping Record Information.

I hereby certify the monument and accessories shown above were field located on 3-28-05.

**Arthur W. Parsons, County Surveyor**  
Professional Surveyor and Mapper  
Florida Certificate No. 2987  
Date Signed 12-19-05

Lee County Department of Transportation  
1500 Monroe Street  
Fort Myers, Florida 33901  
Phone: (239) 479-8900

POINT NO. 229

BLM REFERENCE NO. T43SR25E540500