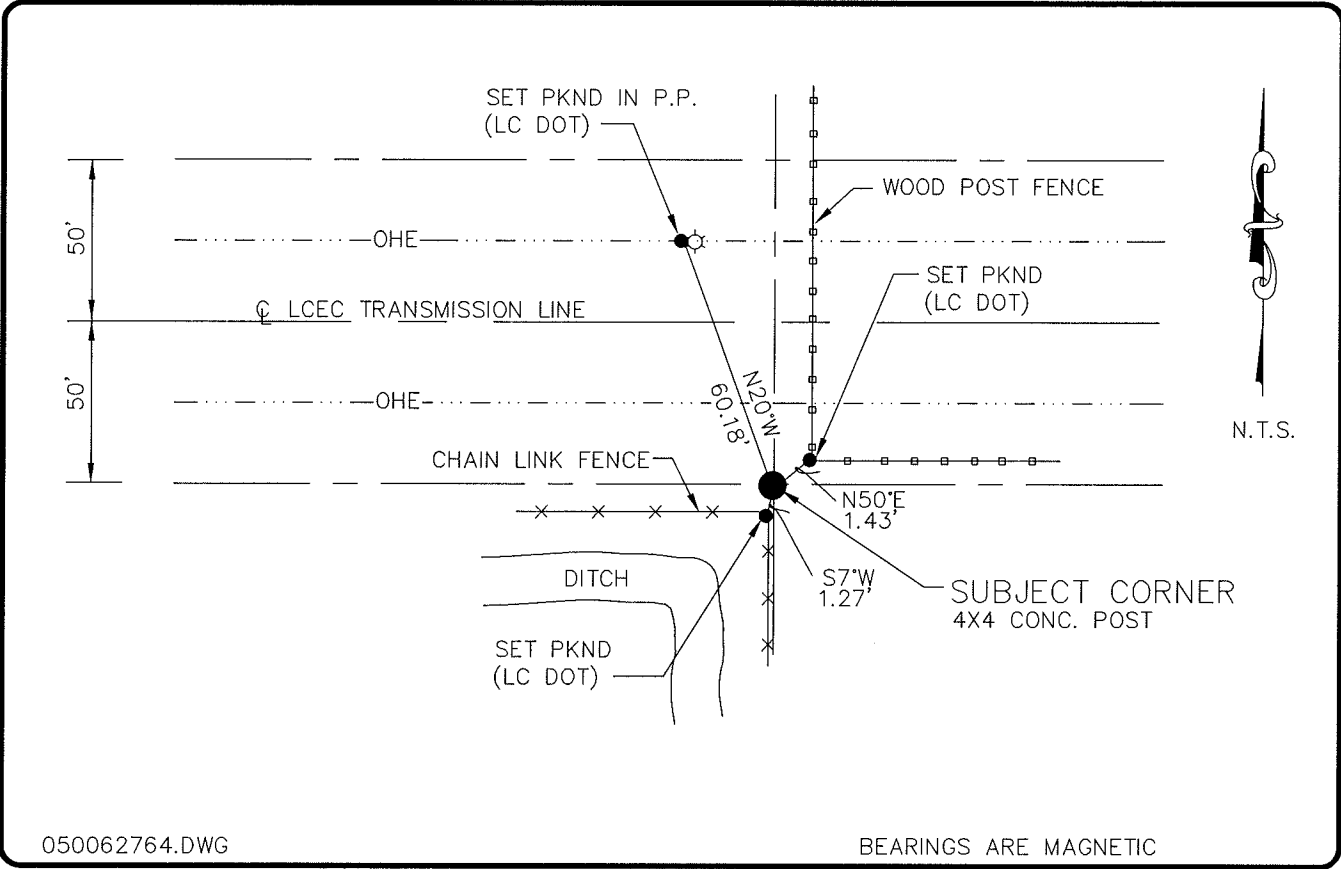


LAND CORNER RECORD

**PUBLIC WORKS
LEE COUNTY, FLORIDA**

Address - 1500 Monroe St., Ft. Myers, Fla. 33901

Phone : (239) 479-8900



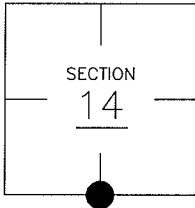
050062764.DWG

BEARINGS ARE MAGNETIC

COMMENTS:

CORNER DESCRIPTION

S 1/4 Corner
Section 14
Township 43
Range 25



LES BULSON FOUND 4"X4" CONC. POST IN 1980 AND ACCEPTED AS 1/4 CORNER AND SET REFERENCE POINTS. STARNES LOCATED SAME POST IN 1981.

HORIZONTAL POSITION INFORMATION

Florida West Zone, NAD 1983(1990 Adjustment)
Northing(ft) 869582.61 Easting(ft) 726211.58
Latitude 26°43'33.11488" Longitude 81°47'07.46005"
Scale Factor 0.99994680

EXISTING CERTIFIED CORNER RECORDS

Document No.	Date
<u>8846</u>	<u>11-15-80</u>
<u>13829</u>	<u>8-16-81</u>

The above documents are based on FDEP Bureau of Surveying and Mapping Record Information.

I hereby certify the monument and accessories shown above were field located on 11-9-04

Arthur W. Parsons
Arthur W. Parsons, County Surveyor
Professional Surveyor and Mapper
Florida Certificate No. 2987
Date Signed 12-19-05

Lee County Department of Transportation
1500 Monroe Street
Fort Myers, Florida 33901
Phone: (239) 479-8900

POINT NO. 132

BLM REFERENCE NO. T43SR25E540400